

Alberta Live Animal Markets: Visit individual market websites for more information about applicable auction fees and upcoming sales

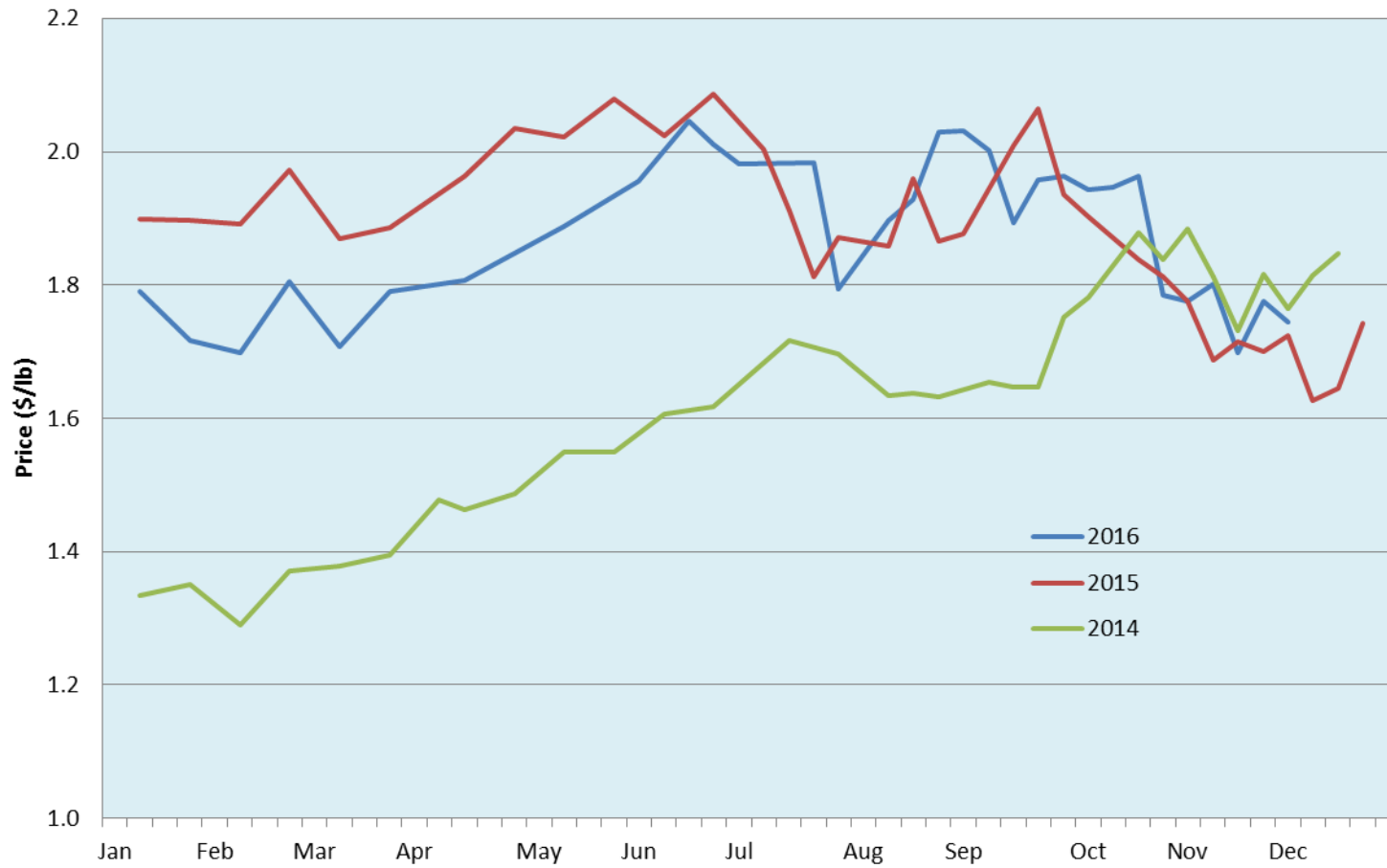
Date	Sale	Lambs (\$/lb)		Lambs (\$/lb)		Lambs (\$/lb)		Sheep(\$/lb): Bred ewes \$/hd		Head
		Weight (lbs)	low - high	Weight (lbs)	low - high	Weight (lbs)	low - high		low - high	
28-Nov-16	Beaver Hill www.beaverhillauctions.com	0-54: wool	2.01 - 2.20	70-85: wool	1.90 - 2.12	86-105:wool	1.85 - 2.06	Ewes: wool	0.65 - 1.40	574
		0-54: hair	1.88 - 2.20			86-105:hair	1.81 - 2.05	Ewes: hair	0.70 - 1.00	
		55-69: wool	2.11 - 2.24	70-85: hair	1.74 - 2.10	106+:wool	1.70 - 1.85	Rams: wool	0.84 - 1.07	
		55-69: hair	1.86 - 2.14			106+:hair	1.65 - 1.86	Rams: hair	0.74 - 1.00	
								Bred Ewes	- - -	
						Ewe/Lamb(s)	- - -			
No sale this week	VJV Westlock www.vjvauction.com	0-69: wool	- - -	70-85: wool	- - -	86-105: wool	- - -	Ewes: wool	- - -	-
						86-105: hair	- - -	Ewes: hair	- - -	
		0-69: hair	- - -	70-85: hair	- - -	106+: wool	- - -	Rams: wool	- - -	
						106+: hair	- - -	Rams: hair	- - -	
								Bred Ewes	- - -	
						Ewe/Lamb(s)	- - -			
29-Nov-16	Olds Auction www.oldsauktion.com	30-50	2.00 - 2.20	70-80	1.80 - 1.85	90-100	1.55 - 1.70	Ewes	0.65 - 1.20	314 <small>(incl.goats)</small>
		50-60	2.00 - 2.20	80-90	1.70 - 1.80	100-110	1.55 - 1.60	Rams	0.70 - 1.00	
		60-70	1.90 - 1.95			110+	1.55 - 1.70	Bred Ewes	- - -	
26-Nov-16	Picture Butte www.picturebutteauction.ca					Feeder	1.88 - 1.95	Slaughter Ewes	0.77 - 0.83	-
						Slaughter	1.79 - 1.88	Feeder Ewes	0.88 - 1.00	
								Bred Ewes	- - -	
								Rams	- - -	

Ontario Live Animal Markets

28-Nov-16	OSI www.ontariostockyards.on.ca	0-65	2.52 - 2.80	65-80	2.29 - 2.80	95-110	2.11 - 2.29	Sheep	0.95 - 1.15	1418
				80-95	2.10 - 2.34	110+	1.95 - 2.18	Thinner	0.90 - 1.20	
						Feeder	1.70 - 2.30	Rams	0.95 - 1.25	
29-Nov-16	OLEX www.ontariosheep.org	0-50	2.05 - 2.88	65-79	2.10 - 2.75	95-109	2.10 - 2.23	Sheep	1.10 - 1.35	1088
		50-64	2.20 - 3.10	80-94	2.16 - 2.40	110+	2.12 - 2.22			
28-Nov-16	Embrun www.ontariosheep.org	0-50	1.25 - 2.14	65-79	2.10 - 2.40	95-109	1.39 - 2.00	Sheep	0.97 - 1.30	506
		50-64	2.02 - 2.52	80-94	1.84 - 2.27	110+	1.40 - 1.92			
24-Nov-16	Brussels www.ontariosheep.org	0-50	0.50 - 1.90	65-79	2.35 - 2.46	95-109	2.14 - 2.32	Sheep	1.25 - 1.50	228
		50-64	2.35 - 2.35	80-94	1.90 - 2.39	110+	2.00 - 2.25			

Alberta Lamb Producers does not endorse individual markets or verify prices provided.

Trends* in auction price for heavy lambs in Alberta



* Due to differences among auctions, prices are reported as 'trends' rather than averages.
Graph is updated on weeks with three markets reporting prices.