

Alberta Live Animal Markets: Visit individual market websites for more information about applicable auction fees and upcoming sales

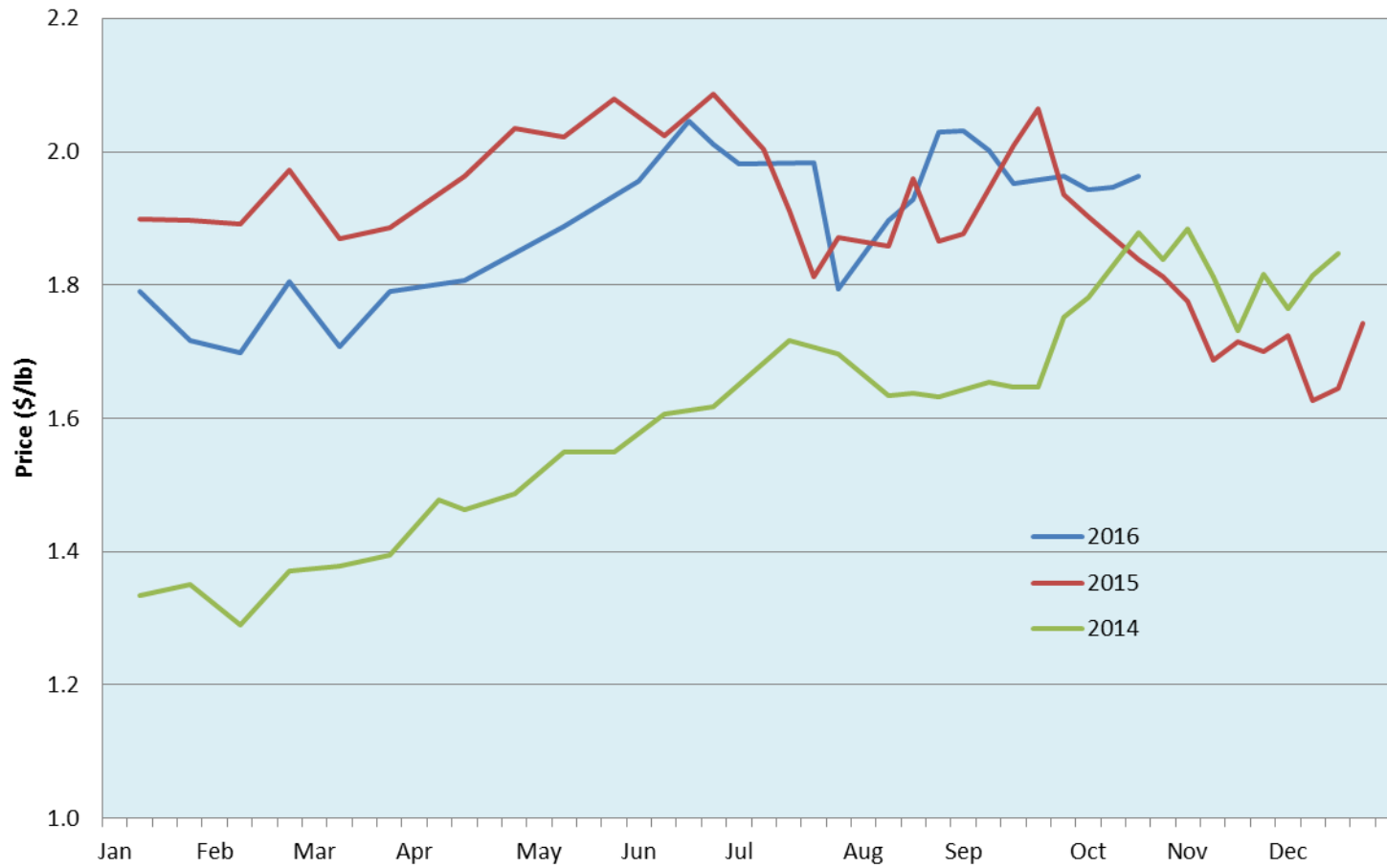
Date	Sale	Lambs (\$/lb)		Lambs (\$/lb)		Lambs (\$/lb)		Sheep(\$/lb): Bred ewes \$/hd		Head
		Weight (lbs)	low - high	Weight (lbs)	low - high	Weight (lbs)	low - high		low - high	
17-Oct-16	Beaver Hill www.beaverhillauctions.com	0-54: wool	1.95 - 2.14	70-85: wool	1.78 - 2.03	86-105:wool	1.78 - 2.04	Ewes: wool	0.67 - 1.39	758
		0-54: hair	1.70 - 1.95			86-105:hair	1.79 - 1.97	Ewes: hair	0.65 - 0.88	
		55-69: wool	1.89 - 2.10	70-85: hair	1.67 - 1.80	106+:wool	1.87 - 1.95	Rams: wool	0.75 - 1.55	
		55-69: hair	1.70 - 1.95			106+:hair	1.85 - 1.93	Rams: hair	0.80 - 1.20	
								Bred Ewes	160 - 200	
						Ewe/Lamb(s)	- - -			
19-Oct-16	VJV Westlock www.vjvauction.com	0-69: wool	1.45 - 2.10	70-85: wool	1.20 - 1.90	86-105: wool	1.75 - 1.87	Ewes: wool	0.67 - 0.72	476
						86-105: hair	1.72 - 1.85	Ewes: hair	0.65 - 0.68	
		0-65: hair	1.67 - 2.07	70-85: hair	1.75 - 1.85	106+: wool	1.83 - 1.88	Rams: wool	0.75 - 0.77	
						106+: hair	- - -	Rams: hair	0.60 - 0.65	
								Bred Ewes	- - -	
						Ewe/Lamb(s)	- - -			
18-Oct-16	Olds Auction www.oldsauction.com	30-50	2.00 - 2.25	70-80	1.95 - 2.10	90-100	1.90 - 2.10	Ewes	0.70 - 1.00	310 (incl.goats)
		50-60	2.00 - 2.15	80-90	1.90 - 2.10	100-110	1.90 - 2.25	Rams	0.70 - 1.10	
		60-70	2.00 - 2.15			110+	1.90 - 2.20	Bred Ewes	- - -	
15-Oct-16	Picture Butte www.picturebutteauction.ca					Feeder	1.98 - 2.19	Slaughter Ewes	- - -	-
						Slaughter	1.92 - 1.94	Feeder Ewes	- - -	
								Bred Ewes	- - -	
								Rams	- - -	

Ontario Live Animal Markets

18-Oct-16	OSI www.ontariostockyards.on.ca	0-65	2.15 - 2.95	65-80	2.20 - 2.58	95-110	2.12 - 2.25	Sheep	0.94 - 1.10	1195
				80-95	2.15 - 2.35	110+	2.00 - 2.17	Thinner	0.90 - 1.10	
						Feeder	1.50 - 2.00	Rams	1.00 - 1.10	
18-Oct-16	OLEX www.ontariosheep.org	0-50	2.53 - 2.85	65-79	2.10 - 2.65	95-109	2.13 - 2.28	Sheep	0.70 - 1.18	1121
		50-64	2.40 - 2.65	80-94	2.08 - 2.31	110+	2.01 - 2.31			
17-Oct-16	Embrun www.ontariosheep.org	0-50	1.15 - 1.98	65-79	1.90 - 2.15	95-109	1.87 - 2.06	Sheep	1.02 - 1.27	464
		50-64	1.77 - 2.20	80-94	1.80 - 2.00	110+	1.59 - 2.05			
13-Oct-16	Brussels www.ontariosheep.org	0-50	2.40 - 2.40	65-79	2.05 - 2.47	95-109	2.25 - 2.40	Sheep	1.05 - 1.22	348
		50-64	1.40 - 2.52	80-94	2.10 - 2.35	110+	2.12 - 2.35			

Alberta Lamb Producers does not endorse individual markets or verify prices provided.

Trends* in auction price for heavy lambs in Alberta



* Due to differences among auctions, prices are reported as 'trends' rather than averages.
Graph is updated only for weeks with three markets reporting prices.