

Alberta Live Animal Markets: Visit individual market websites for more information about applicable auction fees and upcoming sales

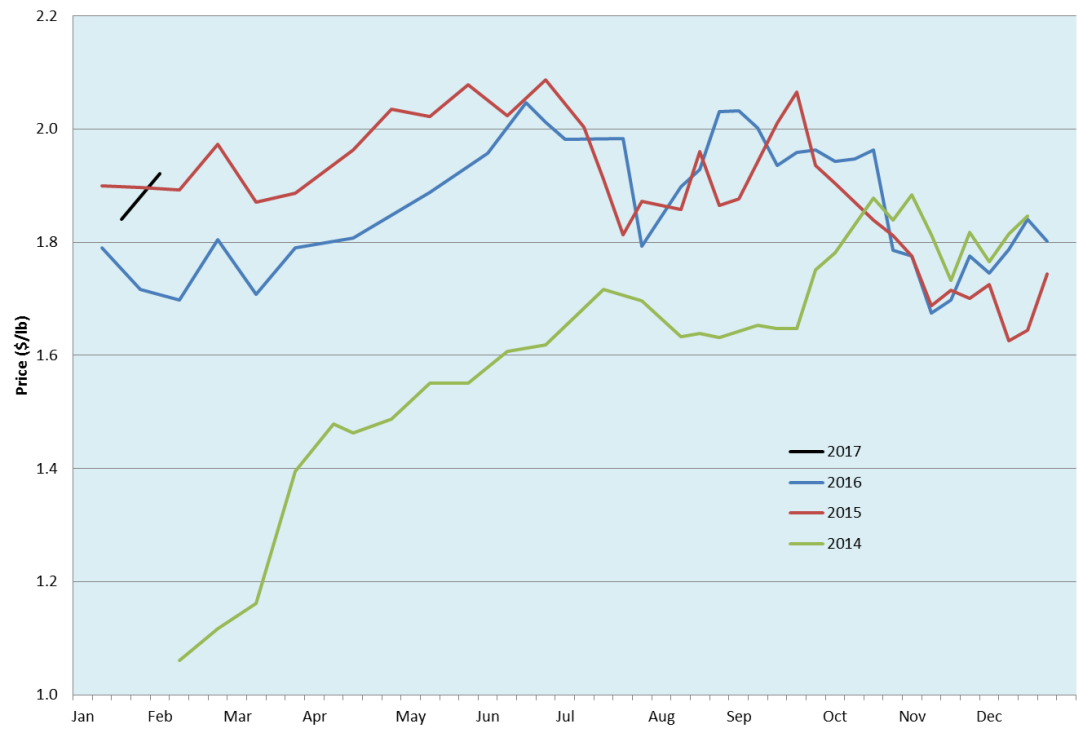
Date	Sale	Lambs (\$/lb)		Lambs (\$/lb)		Lambs (\$/lb)		Sheep(\$/lb): Bred ewes \$/hd		Head
		Weight (lbs)	low - high	Weight (lbs)	low - high	Weight (lbs)	low - high		low - high	
30-Jan-17	Beaver Hill www.beaverhillauctions.com	0-54: wool	2.30 - 2.60	70-85: wool	2.25 - 2.50	86-105:wool	2.10 - 2.45	Ewes: wool	0.87 - 1.30	934
		0-54: hair	2.15 - 2.50			86-105:hair	2.00 - 2.20	Ewes: hair	0.85 - 1.04	
		55-69: wool	2.29 - 2.58	70-85: hair	2.25 - 2.40	106+:wool	1.81 - 1.90	Rams: wool	0.91 - 1.15	
		55-69: hair	2.36 - 2.48			Bred Ewes	180 - 360			
						106+:hair	1.78 - 1.86	Ewe&Lamb(s)	- - -	
No sale this week	VJV Westlock www.vjvauction.com	0-69: wool	- - -	70-85: wool	- - -	86-105: wool	- - -	Ewes: wool	- - -	-
						86-105: hair	- - -	Ewes: hair	- - -	
		0-69: hair	- - -	70-85: hair	- - -	106+: wool	- - -	Rams: wool	- - -	
						106+: hair	- - -	Rams: hair	- - -	
								Bred Ewes	- - -	
31-Jan-17	Olds Auction www.oldsauction.com	30-50	2.00 - 2.50	70-80	2.25 - 2.55	90-100	2.00 - 2.20	Ewes	0.85 - 1.20	114 <small>(incl.goats)</small>
		50-60	2.45 - 2.60	80-90	2.20 - 2.45	100-110	2.00 - 2.10	Rams	1.00 - 1.15	
		60-70	2.30 - 2.55			110+	1.80 - 2.00	Bred Ewes	- - -	
28-Jan-17	Picture Butte www.picturebutteauction.ca					Feeder	2.08 - 2.13	Slaughter Ewes	0.83 - 0.98	-
						Slaughter	1.98 - 2.04	Feeder Ewes	0.83 - 0.98	
								Bred Ewes	- - -	
								Rams	- - -	

Ontario Live Animal Markets

30-Jan-17	OSI www.ontariostockyards.on.ca	0-65	2.84 - 3.28	65-80	2.50 - 3.02	95-110	2.14 - 2.30	Sheep	1.15 - 1.30	706
				80-95	2.22 - 2.40	110+	1.55 - 1.93	Thinner	1.25 - 1.40	
						Feeder	2.00 - 2.50	Rams	1.20 - 1.40	
31-Jan-17	OLEX www.ontariosheep.org	0-50	1.30 - 3.50	65-79	2.42 - 2.87	95-109	1.98 - 2.13	Sheep	1.05 - 1.36	1144
		50-64	2.80 - 3.15	80-94	1.90 - 2.43	110+	2.00 - 2.10			
30-Jan-17	Embrun www.ontariosheep.org	0-50	- - -	65-79	2.35 - 3.05	95-109	1.45 - 2.28	Sheep	1.13 - 1.37	285
		50-64	2.55 - 2.75	80-94	2.00 - 2.70	110+	1.40 - 1.92			
26-Jan-17	Brussels www.ontariosheep.org	0-50	3.25 - 3.25	65-79	2.27 - 3.02	95-109	2.12 - 2.29	Sheep	1.32 - 1.82	323
		50-64	2.94 - 3.12	80-94	2.01 - 2.37	110+	1.85 - 2.15			

Alberta Lamb Producers does not endorse individual markets or verify prices provided.

Trends* in auction price for heavy lambs in Alberta



*Due to differences among auctions, prices are reported as 'trends' rather than averages.
This graph is updated on weeks with three markets reporting prices.