

**Alberta Live Animal Markets: Visit individual market websites for more information about applicable auction fees and upcoming sales**

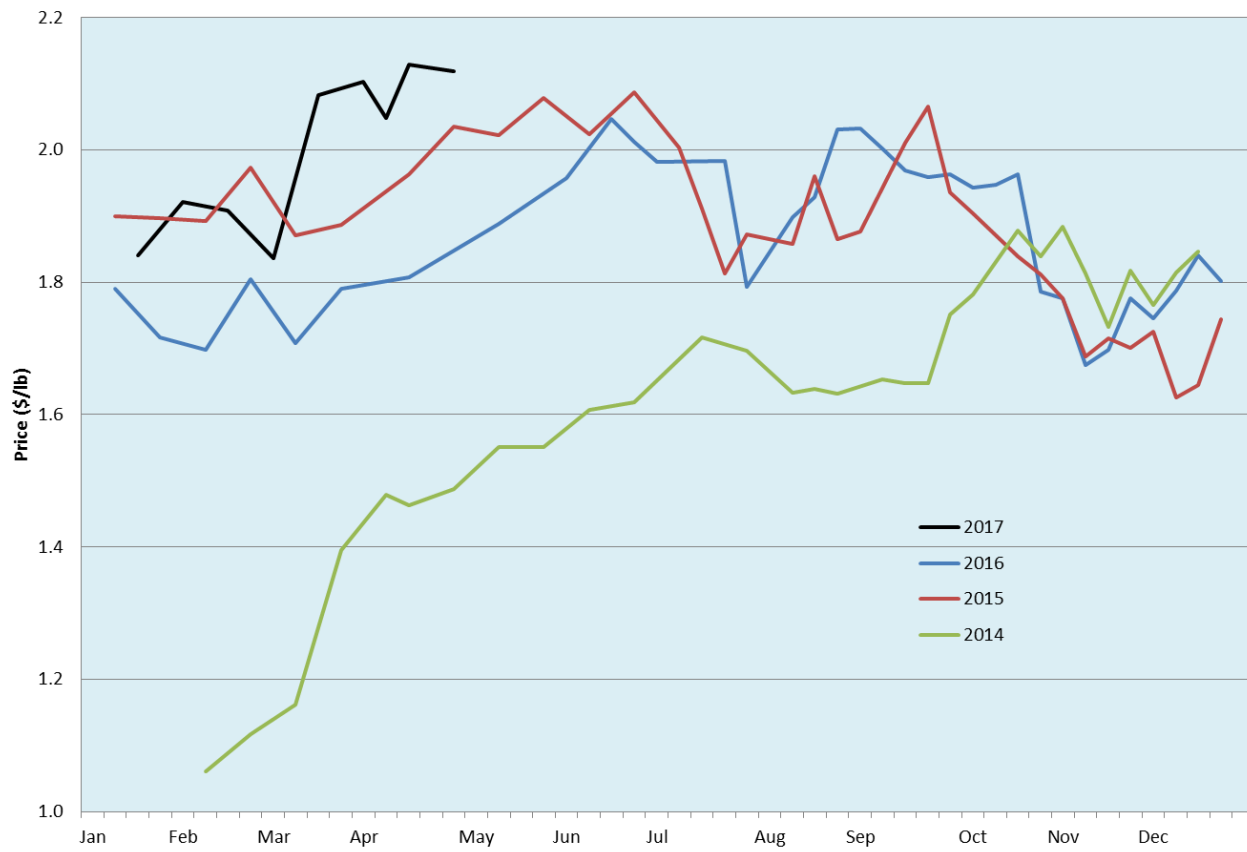
Date	Sale	Lambs (\$/lb)		Lambs (\$/lb)		Lambs (\$/lb)		Sheep(\$/lb): Bred ewes \$/hd		Head
		Weight (lbs)	low - high	Weight (lbs)	low - high	Weight (lbs)	low - high		low - high	
No sale this week	Beaver Hill <a href="http://www.beaverhillauctions.com">www.beaverhillauctions.com</a>	0-54: wool	- - -	70-85: wool	- - -	86-105:wool	- - -	Ewes: wool	- - -	-
		0-54: hair	- - -			86-105:hair	- - -	Ewes: hair	- - -	
		55-69: wool	- - -	70-85: hair	- - -	106+:wool	- - -	Rams: wool	- - -	
		55-69: hair	- - -			106+:hair	- - -	Rams: hair	- - -	
							Bred Ewes	- - -		
								Ewe&Lamb(s)	- - -	
No sale this week	VJV Westlock <a href="http://www.vjvauction.com">www.vjvauction.com</a>	0-69: wool	- - -	70-85: wool	- - -	86-105: wool	- - -	Ewes: wool	- - -	-
						86-105: hair	- - -	Ewes: hair	- - -	
		0-69: hair	- - -	70-85: hair	- - -	106+: wool	- - -	Rams: wool	- - -	
						106+: hair	- - -	Bred ewes:hair	- - -	
								Bred Ewes:wool	- - -	
								Ewe&Lamb:wool	- - -	
2-May-17	Olds Auction <a href="http://www.oldsauction.com">www.oldsauction.com</a>	30-50	2.40 - 2.60	70-80	2.35 - 2.60	90-100	2.10 - 2.40	Ewes	0.90 - 1.25	225  (incl.goats)
		50-60	2.40 - 2.60	80-90	2.35 - 2.60	100-110	2.00 - 2.20	Rams	0.90 - 1.20	
		60-70	2.40 - 2.55			110+	2.00 - 2.20	Bred Ewes	- - -	
29-Apr-17	Picture Butte <a href="http://www.picturebutteauction.ca">www.picturebutteauction.ca</a>					Feeder	2.28 - 2.49	Slaughter Ewes	0.95 - 1.08	-
						Slaughter	2.13 - 2.20	Feeder Ewes	1.03 - 1.25	
								Ewe&lamb(s)	- - -	
								Bred ewes	- - -	
								Rams	- - -	

**Ontario Live Animal Markets**

1-May-17	OSI <a href="http://www.ontariostockyards.on.ca">www.ontariostockyards.on.ca</a>	0-65	2.90 - 3.13	65-80	2.70 - 2.90	95-110	2.80 - 2.90	Sheep	1.15 - 1.25	813
				80-95	2.60 - 3.00	110+	1.40 - 2.10	Thinner	1.20 - 1.35	
						Feeder	2.70 - 3.00	Rams	1.10 - 1.20	
2-May-17	OLEX <a href="http://www.ontariosheep.org">www.ontariosheep.org</a>	0-50	3.23 - 3.75	65-79	3.08 - 3.24	95-109	2.66 - 3.05	Sheep	0.85 - 1.42	1228
		50-64	3.10 - 3.28	80-94	2.65 - 2.83	110+	2.25 - 2.80			
1-May-17	Embrun <a href="http://www.ontariosheep.org">www.ontariosheep.org</a>	0-50	3.25 - 3.60	65-79	3.10 - 3.30	95-109	2.60 - 3.00	Sheep	1.20 - 1.52	249
		50-64	3.05 - 3.50	80-94	3.10 - 3.30	110+	1.80 - 2.65			
27-Apr-17	Brussels <a href="http://www.ontariosheep.org">www.ontariosheep.org</a>	0-50	3.20 - 3.45	65-79	3.05 - 3.15	95-109	2.96 - 3.07	Sheep	1.00 - 1.41	639
		50-64	3.14 - 3.30	80-94	2.81 - 3.10	110+	2.43 - 2.97			

**Alberta Lamb Producers does not endorse individual markets or verify prices provided.**

### Trends\* in auction price for heavy lambs in Alberta



\*Due to differences among auctions, prices are reported as 'trends' rather than averages.  
This graph is updated on weeks with three markets reporting prices.