

Alberta Live Animal Markets: Visit individual market websites for more information about applicable auction fees and upcoming sales

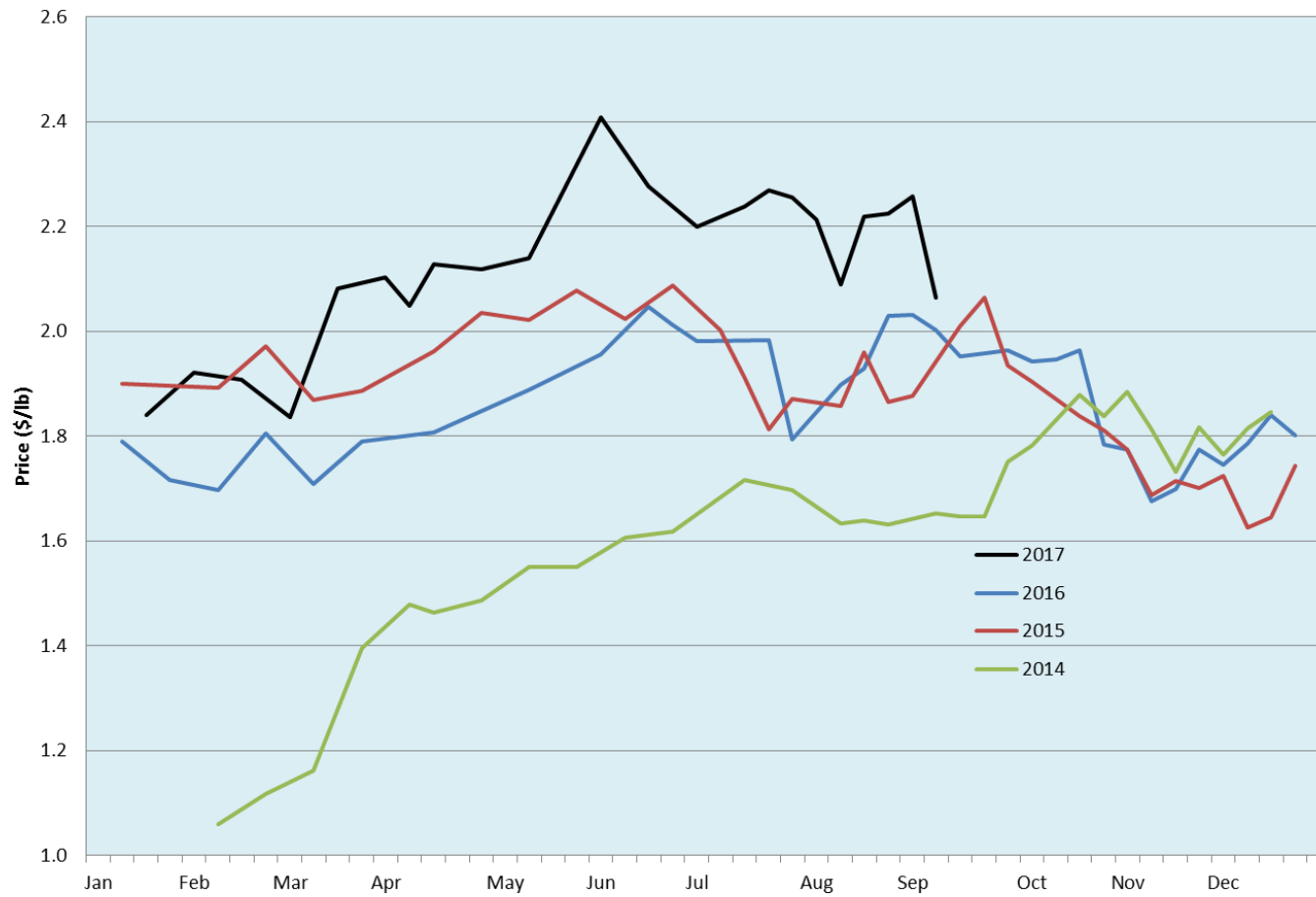
Date	Sale	Lambs (\$/lb)		Lambs (\$/lb)		Lambs (\$/lb)		Sheep(\$/lb): Bred ewes \$/hd		Head
		Weight (lbs)	low - high	Weight (lbs)	low - high	Weight (lbs)	low - high		low - high	
5-Sep-17	Beaver Hill www.beaverhillauctions.com	0-54: wool	2.25 - 2.50	70-85: wool	2.15 - 2.40	86-105:wool	1.95 - 2.25	Ewes: wool	0.91 - 1.32	991
		0-54: hair	2.00 - 2.35			86-105:hair	1.80 - 2.10	Ewes: hair	0.85 - 1.29	
		55-69: wool	2.28 - 2.52	70-85: hair	2.00 - 2.27	106+:wool	1.90 - 2.15	Rams: wool	1.00 - 1.43	
		55-69: hair	2.20 - 2.35			106+:hair	1.80 - 2.00	Rams: hair	0.96 - 1.26	
						Bred Ewes	- - -			
								Ewe&Lamb(s)	- - -	
5-Sep-17	VJV Westlock www.vjvauction.com	0-69: wool	2.35 - 2.45	70-85: wool	2.15 - 2.35	86-105: wool	2.05 - 2.15	Ewes: wool	0.70 - 1.20	861
						86-105: hair	1.50 - 1.60	Ewes: hair	0.70 - 0.80	
		0-69: hair	1.70 - 2.00	70-85: hair	1.60 - 1.70	106+: wool	2.00 - 2.20	Rams: wool	0.95 - 1.30	
						106+: hair	- - -	Rams:hair	1.00 - 1.20	
						Bred Ewes:wool	- - -			
								Ewe&Lamb:hair	- - -	
5-Sep-17	Olds Auction www.oldsaction.com	30-50	2.30 - 2.60	70-80	2.20 - 2.40	90-100	2.00 - 2.20	Ewes	0.85 - 1.50	316
		50-60	2.30 - 2.55	80-90	2.10 - 2.30	100-110	2.00 - 2.20	Rams	1.00 - 1.50	
		60-70	2.30 - 2.50			110+	1.90 - 2.20	Bred Ewes	- - -	
									(incl.goats)	
2-Sep-17	Picture Butte www.picturebutteauction.ca					Feeder	2.15 - 2.23	Slaughter Ewes	1.00 - 1.08	-
						Slaughter	2.11 - 2.13	Feeder Ewes	1.00 - 1.08	
								Ewe&lamb(s)	- - -	
								Bred ewes	- - -	
								Rams	1.18 - 1.25	

Ontario Live Animal Markets

5-Sep-17	OSI www.ontariostockyards.on.ca	0-65	2.20 - 2.40	65-80	2.15 - 2.30	95-110	2.20 - 2.30	Sheep	1.20 - 1.40	444
				80-95	2.15 - 2.20	110+	2.00 - 2.11	Thinner	1.20 - 1.30	
						Feeder	2.00 - 2.30	Rams	1.10 - 1.40	
5-Sep-17	OLEX www.ontariosheep.org	0-50	2.70 - 2.88	65-79	2.22 - 2.95	95-109	2.15 - 2.44	Sheep	1.20 - 1.73	1010
		50-64	2.33 - 3.33	80-94	2.18 - 2.52	110+	2.15 - 2.43			
4-Sep-17	Embrun www.ontariosheep.org	0-50	2.00 - 2.55	65-79	2.30 - 2.70	95-109	2.26 - 2.65	Sheep	1.14 - 1.46	265
		50-64	2.40 - 2.60	80-94	2.25 - 2.75	110+	- - -			
31-Aug-17	Brussels www.ontariosheep.org	0-50	2.40 - 2.40	65-79	2.52 - 2.85	95-109	2.35 - 2.54	Sheep	1.01 - 1.45	641
		50-64	2.60 - 3.10	80-94	2.42 - 2.70	110+	1.70 - 2.35			

Alberta Lamb Producers does not endorse individual markets or verify prices provided.

Trends* in auction price for heavy lambs in Alberta



*Due to differences among auctions, prices are reported as 'trends' rather than averages.
This graph is updated on weeks with three markets reporting prices.