

Alberta Live Animal Markets: Visit individual market websites for more information about applicable auction fees and upcoming sales

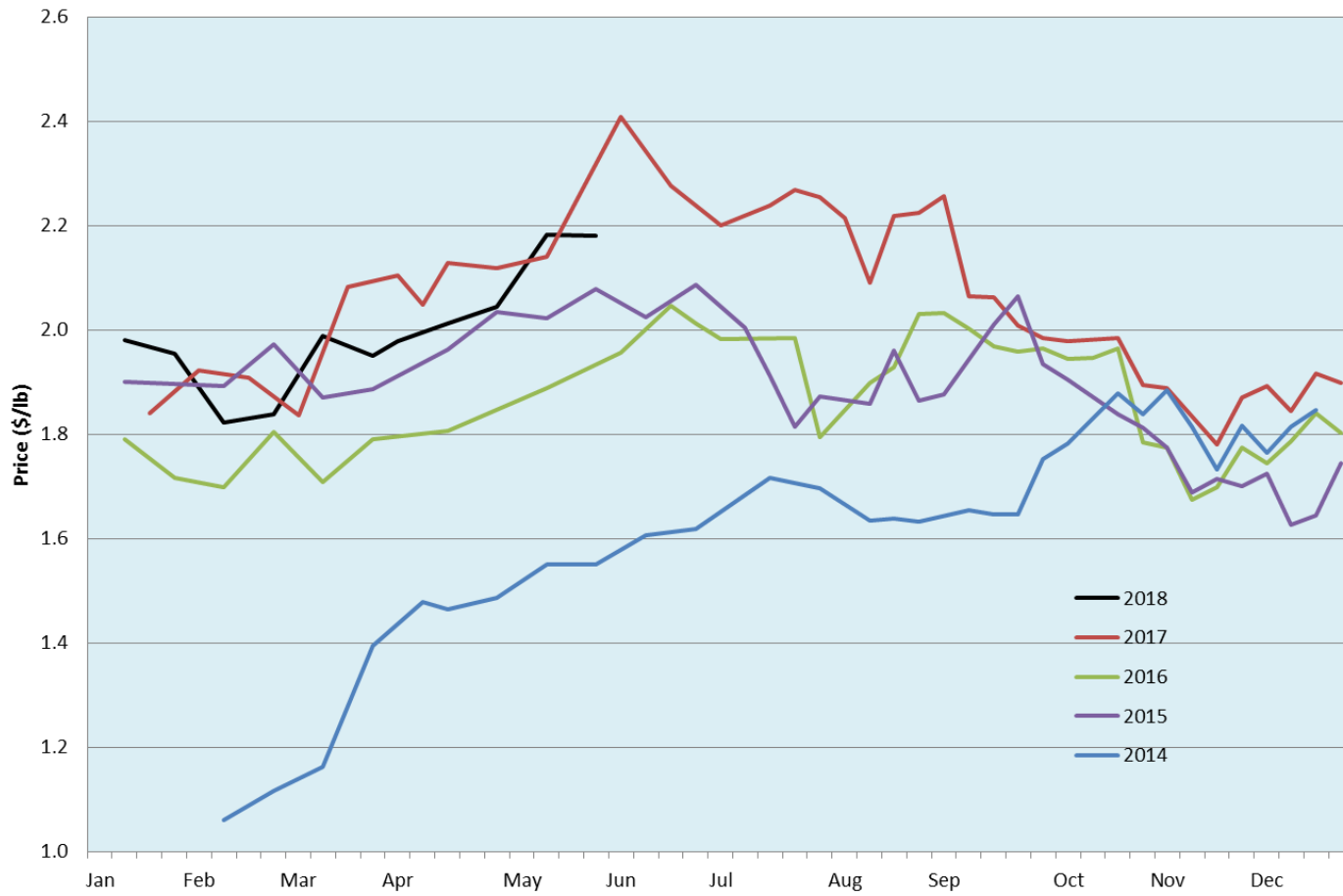
Date	Sale	Lambs (\$/lb)		Lambs (\$/lb)		Lambs (\$/lb)		Sheep(\$/lb): Bred ewes \$/hd		Head
		Weight (lbs)	low - high	Weight (lbs)	low - high	Weight (lbs)	low - high		low - high	
No sale this week	Beaver Hill www.beaverhillauctions.com	0-54: wool	- - -	70-85: wool	- - -	86-105:wool	- - -	Ewes: wool	- - -	-
		0-54: hair	- - -			86-105:hair	- - -	Ewes: hair	- - -	
		55-69: wool	- - -	70-85: hair	- - -	106+:wool	- - -	Rams: wool	- - -	
		55-69: hair	- - -			106+:hair	- - -	Rams: hair	- - -	
						Bred Ewes	- - -			
						Ewe&Lamb(s)	- - -			
No sale this week	VJV Westlock www.vjvauction.com	0-69: wool	- - -	70-85: wool	- - -	86-105: wool	- - -	Ewes: wool	- - -	-
						86-105: hair	- - -	Ewes: hair	- - -	
		0-69: hair	- - -	70-85: hair	- - -	106+: wool	- - -	Rams: wool	- - -	
						106+: hair	- - -	Rams:hair	- - -	
						Bred Ewes:wool	- - -			
						Ewe&Lamb:hair	- - -			
29-May-18	Olds Auction www.oldsauction.com	30-50	2.50 - 2.70	70-80	2.50 - 2.60	90-100	2.30 - 2.50	Ewes	0.85 - 1.25	422 (incl.goats)
		50-60	2.50 - 2.75	80-90	2.40 - 2.55	100-110	2.00 - 2.20	Rams	0.80 - 1.15	
		60-70	2.50 - 2.60			110+	2.00 - 2.20	Bred Ewes	- - -	
26-May-18	Picture Butte www.picturebutteauction.ca					Feeder	2.09 - 2.31	Slaughter Ewes	1.05 - 1.30	-
						Slaughter	1.99 - 2.05	Feeder Ewes	- - -	
								Ewe&lamb(s)	- - -	
								Bred ewes	- - -	
								Rams	- - -	

Ontario Live Animal Markets

28-May-18	OSI www.ontariostockyards.on.ca	0-65	2.85 - 3.10	65-80	2.85 - 3.00	95-110	2.75 - 2.95	Sheep	1.10 - 1.30	894
				80-95	2.75 - 2.95	110+	2.00 - 2.75	Thinner	1.20 - 1.50	
						Feeder	2.70 - 3.00	Rams	1.30 - 1.55	
29-May-18	OLEX www.ontariosheep.org	0-50	3.00 - 3.65	65-79	2.88 - 3.18	95-109	2.59 - 3.17	Sheep	1.00 - 1.43	1627
		50-64	2.87 - 3.21	80-94	2.63 - 2.96	110+	2.25 - 2.45			
28-May-18	Embrun www.ontariosheep.org	0-50	2.40 - 3.05	65-79	2.65 - 3.00	95-109	2.60 - 2.90	Sheep	1.18 - 2.05	570
		50-64	2.60 - 2.85	80-94	2.42 - 2.90	110+	2.15 - 2.45			
24-May-18	Brussels www.ontariosheep.org	0-50	3.27 - 3.57	65-79	3.05 - 3.44	95-109	3.04 - 3.27	Sheep	1.22 - 1.87	442
		50-64	3.20 - 3.65	80-94	2.80 - 3.05	110+	2.17 - 3.12			

Alberta Lamb Producers does not endorse individual markets or verify prices provided.

Trends* in auction price for heavy lambs in Alberta



*Due to differences among auctions, prices are reported as 'trends' rather than averages.
This graph is updated on weeks with two or more markets reporting prices.