

**Alberta Live Animal Markets: Visit individual market websites for more information about applicable auction fees and upcoming sales**

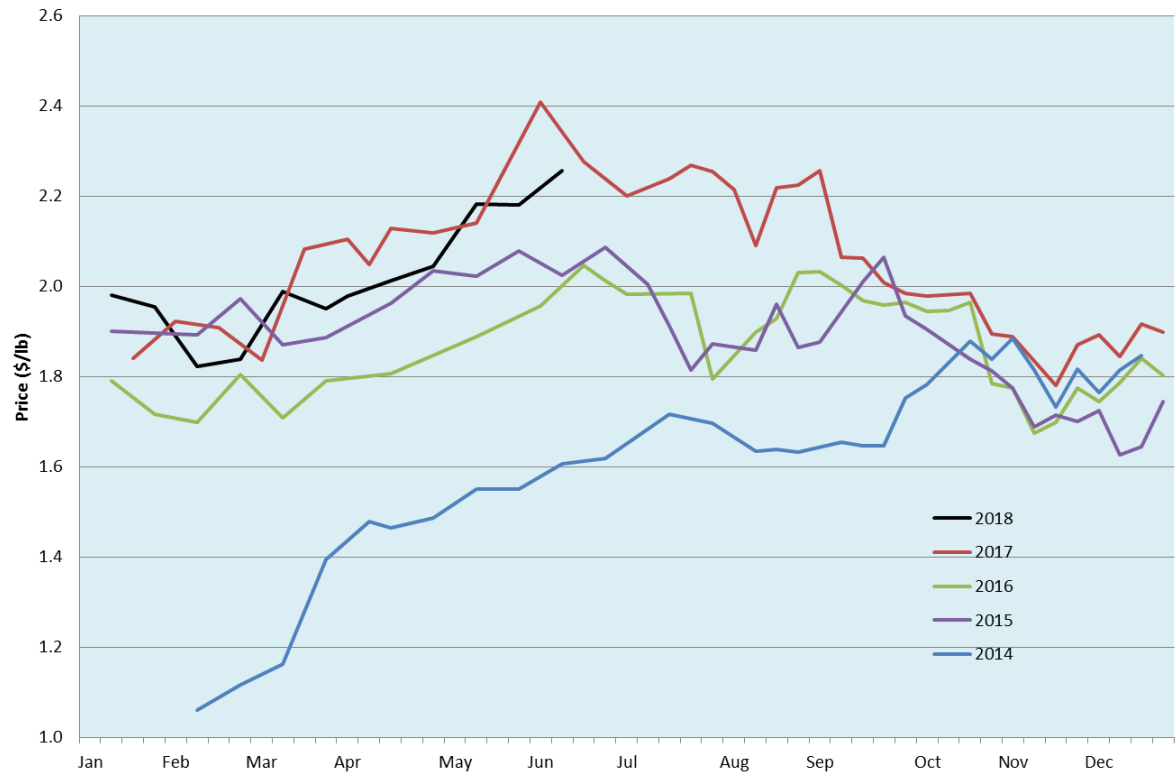
Date	Sale	Lambs (\$/lb)		Lambs (\$/lb)		Lambs (\$/lb)		Sheep(\$/lb): Bred ewes \$/hd		Head
		Weight (lbs)	low - high	Weight (lbs)	low - high	Weight (lbs)	low - high		low - high	
No sale this week	Beaver Hill <a href="http://www.beaverhillauctions.com">www.beaverhillauctions.com</a>	0-54: wool	- - -	70-85: wool	- - -	86-105:wool	- - -	Ewes: wool	- - -	-
		0-54: hair	- - -			86-105:hair	- - -	Ewes: hair	- - -	
		55-69: wool	- - -	70-85: hair	- - -	106+:wool	- - -	Rams: wool	- - -	
		55-69: hair	- - -			106+:hair	- - -	Rams: hair	- - -	
No sale this week	VJV Westlock <a href="http://www.vjvauction.com">www.vjvauction.com</a>	0-69: wool	- - -	70-85: wool	- - -	86-105: wool	- - -	Ewes: wool	- - -	-
						86-105: hair	- - -	Rams: wool	- - -	
		0-69: hair	- - -	70-85: hair	- - -	106+: wool	- - -	Rams:hair	- - -	
						106+: hair	- - -	Bred Ewes:wool	- - -	
12-Jun-18	Olds Auction <a href="http://www.oldsaction.com">www.oldsaction.com</a>	30-50	2.25 - 2.50	70-80	2.20 - 2.35	90-100	2.00 - 2.20	Ewes	0.75 - 1.10	423  (incl.goats)
		50-60	2.30 - 2.50	80-90	2.10 - 2.30	100-110	2.00 - 2.20	Rams	0.75 - 1.00	
		60-70	2.30 - 2.50			110+	2.00 - 2.20	Bred Ewes	- - -	
9-Jun-18	Picture Butte <a href="http://www.picturebutteauction.ca">www.picturebutteauction.ca</a>					Feeder	2.54 - 2.69	Slaughter Ewes	0.88 - 0.95	-
						Slaughter	2.19 - 2.29	Feeder Ewes	0.90 - 1.05	
								Ewe&lamb(s)	- - -	
								Bred ewes	- - -	

**Ontario Live Animal Markets**

11-Jun-18	OSI <a href="http://www.ontariostockyards.on.ca">www.ontariostockyards.on.ca</a>	0-65	2.55 - 2.90	65-80	2.60 - 2.88	95-110	2.55 - 2.64	Sheep	1.10 - 1.30	969
				80-95	2.55 - 2.77	110+	1.90 - 2.40	Thinner	1.20 - 1.50	
						Feeder	2.50 - 2.60	Rams	1.30 - 1.65	
12-Jun-18	OLEX <a href="http://www.ontariosheep.org">www.ontariosheep.org</a>	0-50	3.00 - 3.48	65-79	2.68 - 3.36	95-109	2.50 - 2.85	Sheep	1.10 - 1.40	1285
		50-64	3.15 - 3.43	80-94	2.66 - 2.85	110+	2.40 - 2.40			
11-Jun-18	Embrun <a href="http://www.ontariosheep.org">www.ontariosheep.org</a>	0-50	3.00 - 3.30	65-79	2.80 - 3.02	95-109	1.85 - 3.00	Sheep	1.15 - 1.42	313
		50-64	2.78 - 3.26	80-94	2.88 - 3.02	110+	2.48 - 2.62			
7-Jun-18	Brussels <a href="http://www.ontariosheep.org">www.ontariosheep.org</a>	0-50	3.05 - 3.05	65-79	2.68 - 2.95	95-109	2.48 - 2.57	Sheep	1.12 - 1.22	607
		50-64	2.75 - 3.00	80-94	2.40 - 2.52	110+	2.10 - 2.64			

Alberta Lamb Producers does not endorse individual markets or verify prices provided.

### Trends\* in auction price for heavy lambs in Alberta



\*Due to differences among auctions, prices are reported as 'trends' rather than averages.  
 This graph is updated on weeks with two or more markets reporting prices.