

**Alberta Live Animal Markets: Visit individual market websites for more information about applicable auction fees and upcoming sales**

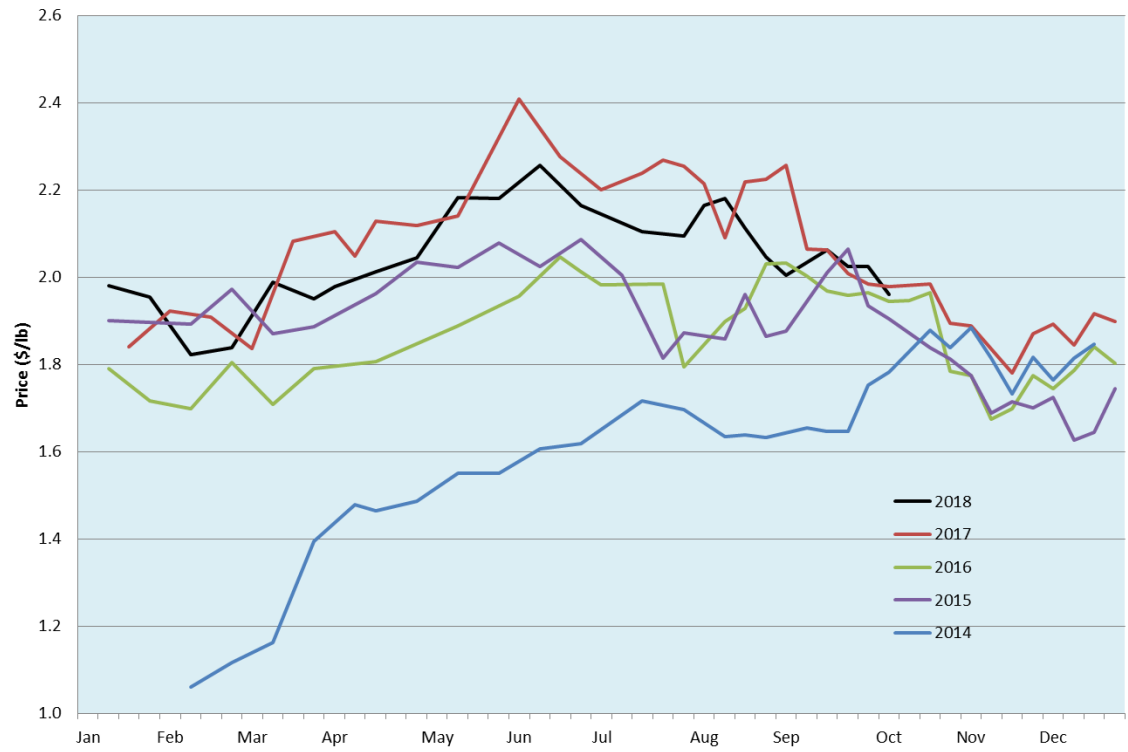
Date	Sale	Lambs (\$/lb)		Lambs (\$/lb)		Lambs (\$/lb)		Sheep(\$/lb): Bred ewes \$/hd		Head
		Weight (lbs)	low - high	Weight (lbs)	low - high	Weight (lbs)	low - high		low - high	
1-Oct-18	Beaver Hill <a href="http://www.beaverhillauctions.com">www.beaverhillauctions.com</a>	0-54: wool	1.85 - 2.25	70-85: wool	1.90 - 2.15	86-105:wool	1.90 - 2.10	Ewes: wool	0.85 - 1.47	1986
		0-54: hair	1.55 - 1.90			86-105:hair	1.80 - 2.00	Ewes: hair	0.85 - 1.37	
		55-69: wool	2.00 - 2.29	70-85: hair	1.71 - 2.10	106+:wool	1.90 - 2.07	Rams: wool	0.85 - 1.46	
		55-69: hair	1.71 - 2.20			106+:hair	1.80 - 1.96	Rams: hair	0.80 - 1.41	
						Bred Ewes	190 - 210			
						Ewe&Lamb(s)	- - -			
2-Oct-18	VJV Westlock <a href="http://www.vjvauction.com">www.vjvauction.com</a>	0-69: wool	1.72 - 2.25	70-85: wool	1.87 - 2.01	86-105: wool	1.84 - 2.07	Ewes: wool	0.70 - 1.23	779
						86-105: hair	- - -	Ewes: hair	- - -	
		0-69: hair	- - -	70-85: hair	- - -	106+: wool	1.55 - 1.91	Rams: wool	0.94 - 1.65	
						106+: hair	- - -	Rams:hair	- - -	
						Bred Ewes:wool	- - -			
						Ewe&Lamb:hair	- - -			
2-Oct-18	Olds Auction <a href="http://www.oldsauktion.com">www.oldsauktion.com</a>	30-50	1.80 - 2.00	70-80	1.85 - 2.00	90-100	2.00 - 2.20	Ewes	0.80 - 1.20	249
		50-60	1.80 - 2.00	80-90	1.85 - 2.00	100-110	2.00 - 2.20	Rams	0.80 - 1.20	
		60-70	1.85 - 2.00			110+	2.00 - 2.10	Bred Ewes	- - -	
29-Sep-18	Picture Butte <a href="http://www.picturebutteauction.ca">www.picturebutteauction.ca</a>					Feeder	1.67 - 2.05	Slaughter Ewes	0.90 - 1.05	-
						Slaughter	1.90 - 2.00	Feeder Ewes	- - -	
								Ewe&lamb(s)	- - -	
								Bred ewes	- - -	
								Rams	0.98 - 1.10	

**Ontario Live Animal Markets**

1-Oct-18	OSI <a href="http://www.ontariostockyards.on.ca">www.ontariostockyards.on.ca</a>	0-65	1.85 - 2.48	65-80	2.07 - 2.60	95-110	2.25 - 2.35	Sheep	1.10 - 1.25	876
				80-95	2.00 - 2.40	110+	2.00 - 2.20	Thinner	1.15 - 1.35	
						Feeder	1.50 - 2.10	Rams	1.20 - 1.40	
2-Oct-18	OLEX <a href="http://www.ontariosheep.org">www.ontariosheep.org</a>	0-50	1.90 - 2.70	65-79	2.18 - 2.50	95-109	2.33 - 2.45	Sheep	1.20 - 1.43	1879
		50-64	2.00 - 2.53	80-94	2.20 - 2.38	110+	2.22 - 2.44			
1-Oct-18	Embrun <a href="http://www.ontariosheep.org">www.ontariosheep.org</a>	0-50	0.85 - 2.15	65-79	2.05 - 2.55	95-109	1.95 - 2.50	Sheep	0.78 - 1.27	296
		50-64	1.75 - 2.35	80-94	2.00 - 2.47	110+	1.75 - 2.22			
27-Sep-18	Brussels <a href="http://www.ontariosheep.org">www.ontariosheep.org</a>	0-50	0.12 - 2.35	65-79	2.12 - 2.47	95-109	2.32 - 2.51	Sheep	1.10 - 1.37	415
		50-64	1.95 - 2.45	80-94	2.16 - 2.42	110+	2.29 - 2.48			

Alberta Lamb Producers does not endorse individual markets or verify prices provided.

### Trends\* in auction price for heavy lambs in Alberta



\*Due to differences among auctions, prices are reported as 'trends' rather than averages.  
This graph is updated on weeks with two or more markets reporting prices.