

Alberta Lamb Producers Annual General Meeting 2018

Teresa Patry, Stettler



THANK YOU TO OUR AGM SPONSORS!

Special Donations

Lamb for today's meals provided by



Thank you to **zoetis** for speaker sponsorship

Platinum



Shearwell Data

Animal Identification & Management Systems

Gold



Silver



Bronze



Alberta Beef Health Solutions





Craig Ward, Lamont

OUR MISSION

Alberta Lamb Producers is a dynamic partner in building a sustainable, thriving industry for sheep producers.

OUR VISION

Alberta lamb: leading in quality and innovation. Growing a profitable industry together.



Business Meeting Agenda

- **Welcome & Introductions**
- **Approval of Agenda**
- **Approval of 2017 Minutes**
- **Financial Statement 2017/18**
- **Operational Budget 2018/19**
- **Director Nominee Speeches**
- **Your Check-off at Work: Review**
- **Looking Forward**
- **Table Discussions**
- **Zone Resolutions 2018**
- **Adjournment**



Ferne Gudnason, Tees

Financial Report

Mr. Shannon Troke
King & Company Chartered Accountants



Howard Woodrow,
Lacombe

Alberta
Lamb
Producers

The logo for Alberta Lamb Producers features the text "Alberta Lamb Producers" in a serif font. To the right of the text is a stylized illustration of a sheep, with its body and legs forming a continuous line.

Looking Forward: 2018/19 Budget



Ferne Gudnason, Tees



Director Elections: Regulation Changes

- Changes voted in at the 2016 Zone meetings
- One fall meeting: AGM
- Directors-at-Large: Mail-in & in-person voting
- Amended regulations published June 2018

www.agriculture.albert.ca and www.ablamb.ca



Director Elections: 2018

Nominee speeches

Polls close at 5:00 pm after the break

Thank you to the

Agricultural Products Marketing Council



Katrina Sjoquist,
Valleyview

Alberta
Lamb
Producers 

Your Check-off at Work: Communications

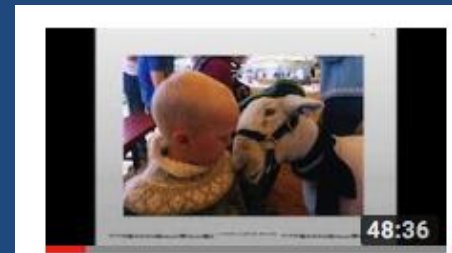
- Quarterly N'ewesletter
- Classified ads on website and N'ewesletter
- N'ewesline (500 subscribers)
- Marketline (330 subscribers)



Bill & Lorna Gibson, Tees
(photo: Orkney, Scotland)

Your Check-off at Work: Communications

- Websites: www.ablamb.ca & www.albertalamb.ca
- YouTube: SheepCentralAlberta
(1345 subscribers, 50 videos)
- Webinars / recordings
- Social media channels



Webinar: Humane Handling for Sheep with Jennifer...



Webinar: Ideas to Reduce Labour and Improve Ewe...



How Useful is Body Condition Scoring as KPI in Breeding...

Your Check-off at Work: Advocacy

- Industry meetings
- Representation on national and provincial committees

Advocacy takes many director and staff hours, and represents thousands of miles travelled...



Susan Neal,
Spruce View

Your Check-Off at Work: National Sheep Network



NSN represents 75% of Canada's ewe flock

Working together to move our industry forward:

- Canadian Federation of Agriculture
- AgGrowth Coalition: Business Risk Management
- Animal Health Canada
- Sheep Value Chain Roundtable
- National market watch



Your Check-Off at Work: Provincial Activities

- Bighorn Sheep Management Plan
- Review of Predation Programs
- Farm and Ranch Employment/AgCoalition
- Consultation in Research and Development
- Chops and Crops
- Support of 4-H, Calgary Stampede, Aggie Days
- Alberta Farm Animal Care



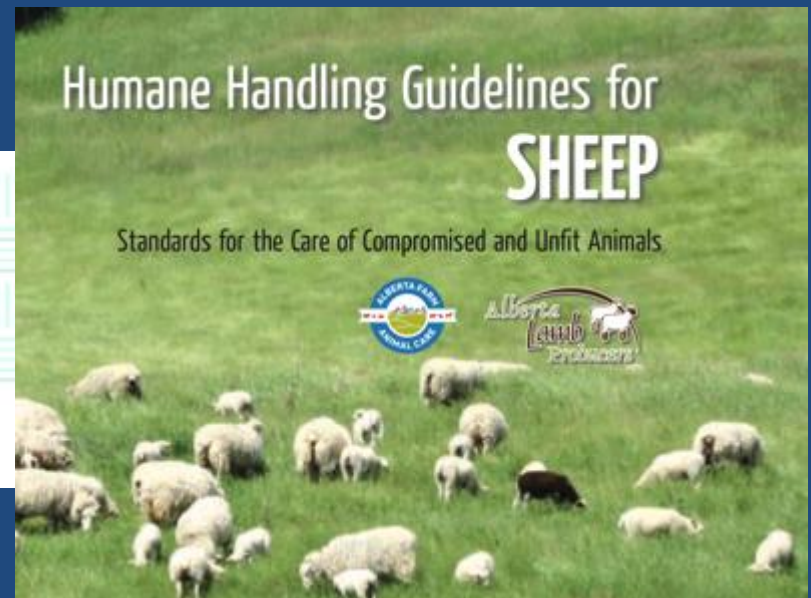
Alberta Farm Animal Care

Alberta Farm Animal Care works to ensure farm animals in Alberta are respected, well-cared for and experience a high state of welfare through collaboration with and support of our members and partners.



FLY-STRIKE FACT SHEET

A Fact Sheet for the Canadian Sheep Industry
Dr. Melissa Moggy



Your Check-off at Work: Research

- Why is ALP important to research?
- Approved accuracy in diagnosing pregnancy and predicting litter size at early ewe gestation: Metabolomics analyses for Pen side kit development: Dr. Susan Markus, AAF
- Incidence and Characterization of Feedlot Lambs and Ewe Flock Lameness in Alberta: Dr. Karen Schwartzkopt-Genswein (AAF), Dr. Wiolene Nordi (AAFC), Nick Johnston



Your Check-off at Work: Research

- Investigating and mitigating the emergence of *Haemonchus contortus* as a major pathogen of Western Canadian sheep: Dr. Michel Levy and Dr. John Gilleard, U of C
- Development of a respiratory vaccine for sheep: Dr. Andrew Potter and Dr. Joyce Vandonkersgoed
- Reducing impacts of ergot alkaloids on performance of growing lambs: Dr. Kim Stanford, AAF
- Benchmarking Canadian lamb carcass and meat quality through use of innovative platform technologies: Dr. Manuel Juarez, AAFC.

Your Check-Off at Work: ALP Project Work



Welfare Program Delivery Agent (Growing Forward 2)
Educational materials, lambing kits, webinars, videos, factsheets, calendar and presentations/workshops.



BIOSECURITY

How does biosecurity help?
Biosecurity practices are implemented to protect a farm from the entry and spread of infectious diseases. Implementing an organized on-farm biosecurity plan helps ensure all potential threats are being considered.

Implementing a plan
The National Sheep On-Farm Biosecurity Standard and Planning Guide were developed to help Canadian sheep operations develop a biosecurity plan that fits their goals. Using a step-by-step approach, the Planning Guide helps identify management weaknesses and maximize the risk of disease being:
- introduced to a flock
- spread within a flock
- and spread from an infected flock to other flocks

Biosecurity plans target four areas to stop the spread of disease:
- Animal Health Management
- Record Keeping
- Fens, Facilities, Equipment
- Disease Transmission by A...

How can infectious diseases be spread?
Infectious diseases are caused by fungi and protozoans.
- Parasites reproduced in the soil in body fluids, blood, sweat, urine, and feces.
- Diseases are spread by people, non-infected animals, by...

Growing Forward 2

Sheep Pain Facial

Ocular Tightening: When tightening is not present, the eye is round in shape. As the muscles around the eye tighten, they become more prominent and the eye starts to narrow. If the eye closes more than half way it should be scored as present.

Abnormal Nostril & Muzzle Shape: Normally, a shallow 'U' shape is present between the nostril openings. The surrounding muscle follows this 'U' shape. As the position becomes abnormal, the area between the nostril (and the surrounding muscle) appears increasingly 'V' shaped.

Expression Scale *

Cheek Muscle Tightening: When tightening is present, the muscle that runs from the corner of the mouth area along the jaw line and up to the cheek bone is more prominent. There may also be tightening from the cheek towards the ear along the edge of the eye.

Abnormal Ear Position: Normally, ears are held erect and the inner part of the ear is visible when viewed from the front. As the position becomes abnormal, the ears drop and turn towards the face, so the inner part of the ear is not visible. The ear may be held in a backwards position. Normal ear position will differ depending on breed type; however, the changes that occur are the same for all breeds.

Sheep Pain Facial Scale

Not present = 0 Partially Present = 1 Present = 2

Not present = 0 Partially Present = 1 Present = 2

Not present = 0 Partially Present = 1 Present = 2

Not present = 0 Partially Present = 1 Present = 2

Not present = 0 Partially Present = 1 Present = 2

Not present = 0 Partially Present = 1 Present = 2

Not present = 0 Partially Present = 1 Present = 2

Not present = 0 Partially Present = 1 Present = 2

Not present = 0 Partially Present = 1 Present = 2

Not present = 0 Partially Present = 1 Present = 2

Not present = 0 Partially Present = 1 Present = 2

Not present = 0 Partially Present = 1 Present = 2

Animal Care Is in Our Hands
2018

Your Check-off at Work: ALP & Alberta Lamb Resources

Body Condition Scoring of Sheep

BODY CONDITION NUMBER Spine Loin Transverse Processes

- Transverse processes sharp
- Eggs to past fingers underneath them
- Transverse processes rounded on edges
- Slight pressure needed to push underneath them
- Transverse processes smooth
- Firm pressure needed to push fingers under edge
- Transverse processes can't be felt
- Transverse processes can't be felt

Sheep and Goat Management in Alberta Health

Alberta Lamb Producers
Alberta Goat Association

Sheep and Goat Management in Alberta Nutrition

Alberta Lamb Producers
Alberta Goat Association

Neonatal Lamb Mortem Examination Guide

Alberta Lamb Producers

Sheep and Goat Management in Alberta Reproduction

Alberta Lamb Producers
Alberta Goat Association

Buy local Alberta Lamb!

ALBERTA LAMB IS PACKED WITH NUTRIENTS AND IS A GREAT ADDITION TO A HEALTHY DIET

BUYING LOCAL ALBERTA LAMB IS GREAT FOR YOUR HEALTH, YOUR COMMUNITY AND THE ECONOMY.

HIGH PROTEIN
LOW IN CALORIES

ALBERTA LAMB IS GREAT FOR YOU AND YOUR COMMUNITY. BUY LOCAL ALBERTA LAMB AND SUPPORT LOCAL BUSINESS AND ECONOMY. THERE ARE OVER 600,000 SHEEP IN CANADA.

Alberta Lamb Producers

Canadian Lamb Leg

Naturally Nutrition Packed

Canada's Food Guide recommends adults consume 2-3 servings of Meat and Alternatives daily.

One serving is 75g of cooked lamb (the size of a deck of cards).

Nutrition Facts

Serving Size 75 grams (75g)

Amount Per Serving	% Daily Value
Calories 150	Calories from Fat 60
Total Fat 7g	11%
Saturated Fat 3g	15%

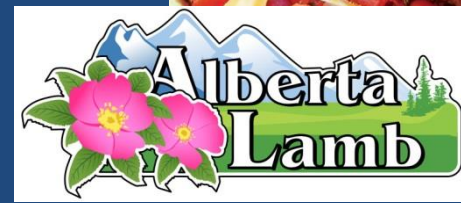
Benefits

Excellent Source Protein, Vitamin B12, Zinc, and Selenium

Alberta Lamb Producers

Alberta Lamb Roasted Chops with Fresh Tomato Salsa

Alberta Lamb Producers





**Alberta Sheep Breeders'
Association
2019 Symposium**

ASBA 1-866-967-4337

Back to our Roots

Join us for our
50th
Anniversary!

Guest Speakers

- Dr. Greg Penner
- Dr. Lesley Stubbings
- Tony Stolz

Genovis Workshop

**50th Anniversary
Celebration Banquet**

Trade Fair

Silent Auction

Red Deer, AB

October 17-19, 2019

www.albertasheepbreeders.ca



Looking
Forward:
2019 ASBA
Symposium

Looking Forward: Canadian Agricultural Partnership (the 'New Growing Forward 2')

- New federal-provincial-territorial agricultural funding policy framework:

Started April 1, 2018 and on-going

5-year; \$3 billion

- Focus on six priority areas
- 3 producer programs available: Environmental Stewardship and climate change; Farm water supply; Irrigation efficiency
- ALP investigating programs for commissions



Visit cap.alberta.ca/CAP/ or 310-FARM (2367)

Farm Energy and Agri-Processing (FEAP)

- Government of Alberta program
- Energy efficiency for new buildings and refitting projects: Ventilation, Lighting, etc.

www.agriculture.alberta.ca



Looking Forward: What to Watch



Lori Nibourg,
Erskine

- Antimicrobial policy changes: Dec 1
- Farm & Ranch Employment Standards: Dec 1
- Changes to national traceability – 2019:
Enhanced animal movement tracking
- U of C Parasite Management website
- New ALP Strategic Plan
- Service Charge Model

Looking Forward: Service Charge Plebiscite

- Many commissions depend on service charges
- Prior to 2009, non-refundable check off
- Bill 9 (2017): Vote on service charge model
- Fall 2018: Alberta Beef Producers and Potato Growers of Alberta
- What will ALP do?



Julia Los, Yellowhead County

Alberta
Lamb
Producers



Table Discussions & Zone Resolutions



Alberta
Lamb
Producers 