

**Alberta Live Animal Markets: Visit market websites for more information about applicable auction fees and upcoming sales**

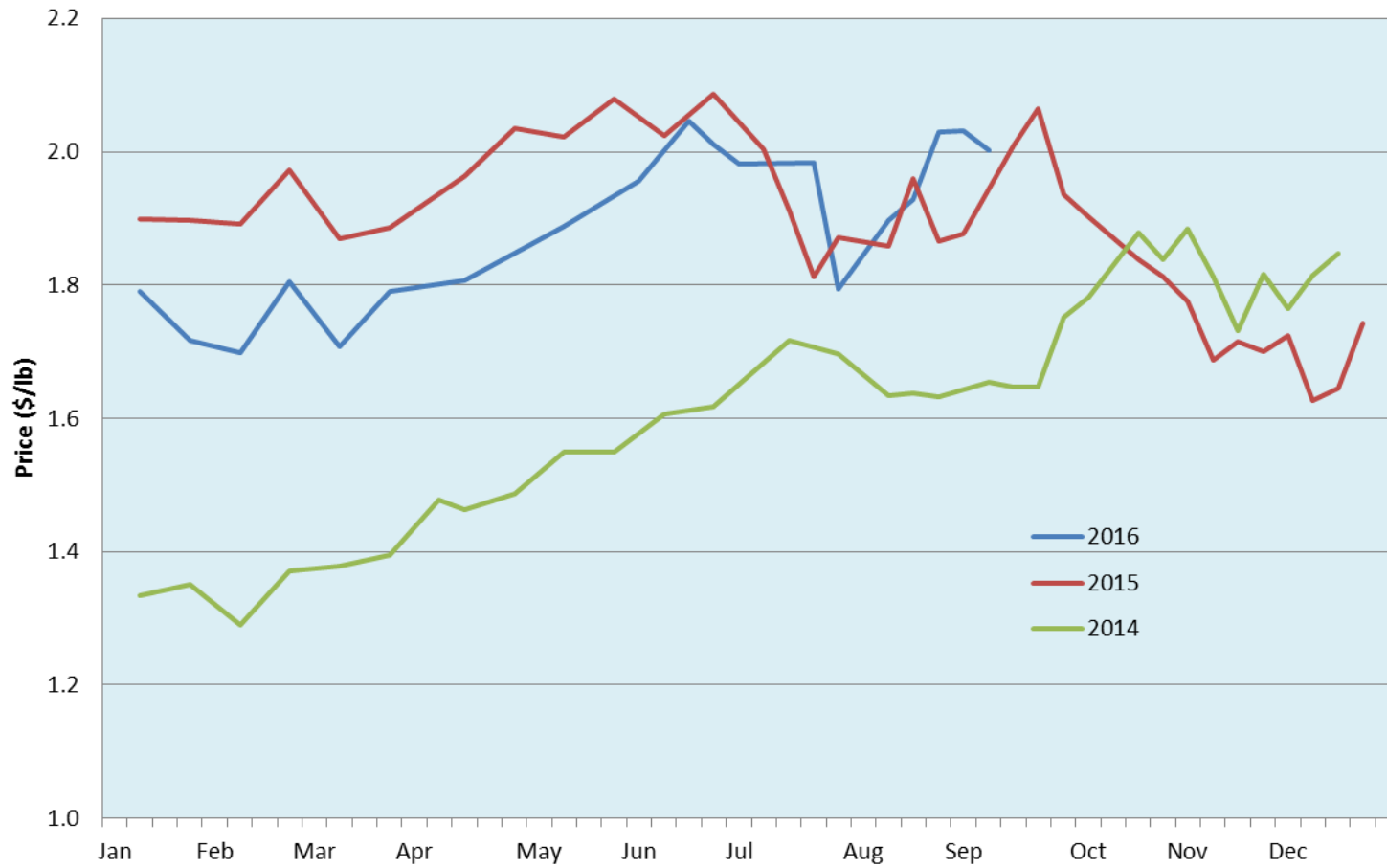
Date	Sale	Lambs (\$/lb)		Lambs (\$/lb)		Lambs (\$/lb)		Sheep(\$/lb): Bred ewes \$/hd		Head
		Weight (lbs)	low - high	Weight (lbs)	low - high	Weight (lbs)	low - high		low - high	
6-Sep-16	Beaver Hill <a href="http://www.beaverhillauctions.com">www.beaverhillauctions.com</a>	0-54: wool	2.35 - 2.60	70-85: wool	2.00 - 2.23	86-105:wool	1.93 - 2.09	Ewes: wool	0.80 - 1.53	1681
		0-54: hair	2.10 - 2.37			86-105:hair	1.85 - 2.01	Ewes: hair	0.80 - 1.33	
		55-69: wool	2.23 - 2.43	70-85: hair	1.93 - 2.12	106+:wool	1.83 - 1.98	Rams: wool	0.80 - 1.30	
		55-69: hair	2.13 - 2.38			106+:hair	1.80 - 1.95	Rams: hair	0.91 - 1.06	
								Bred Ewes	- - -	
						Ewe/Lamb(s)	- - -			
6-Sep-16	VJV Westlock <a href="http://www.vjvauction.com">www.vjvauction.com</a>	0-69	1.60 - 2.20	70-85	1.50 - 2.03	86-105	1.80 - 1.97	Ewes	0.50 - 0.78	350
						106+	1.50 - 1.80	Rams	0.70 - 1.15	
								Bred Ewes	- - -	
								Ewe/Lamb(s)	- - -	
6-Sep-16	Olds Auction <a href="http://www.oldsauktion.com">www.oldsauktion.com</a>	30-50	1.50 - 2.40	70-80	2.10 - 2.40	90-100	2.00 - 2.30	Ewes	0.85 - 1.30	815
		50-60	2.10 - 2.50	80-90	2.10 - 2.40	100-110	2.00 - 2.30	Rams	1.00 - 1.40	
		60-70	2.10 - 2.50			110+	2.00 - 2.20	Bred Ewes	- - -	
3-Sep-16	Picture Butte <a href="http://www.picturebutteauction.ca">www.picturebutteauction.ca</a>					Feeder	2.28 - 2.45	Slaughter Ewes	0.88 - 1.10	-
						Slaughter	1.96 - 2.04	Feeder Ewes	- - -	
								Bred Ewes	- - -	
								Rams	- - -	

**Ontario Live Animal Markets**

6-Sep-16	OSI <a href="http://www.ontariostockyards.on.ca">www.ontariostockyards.on.ca</a>	0-65	2.20 - 2.69	65-80	2.35 - 2.70	95-110	2.32 - 2.60	Sheep	1.10 - 1.30	1727
				80-95	2.50 - 2.73	110+	1.75 - 2.10	Thinner	1.00 - 1.25	
						Feeder	1.70 - 2.40	Rams	1.10 - 1.35	
6-Sep-16	OLEX <a href="http://www.ontariosheep.org">www.ontariosheep.org</a>	0-50	2.43 - 2.53	65-79	2.39 - 2.70	95-109	2.33 - 2.46	Sheep	0.95 - 1.35	2463
		50-64	2.26 - 2.46	80-94	2.40 - 2.68	110+	1.31 - 2.39			
5-Sep-16	Embrun <a href="http://www.ontariosheep.org">www.ontariosheep.org</a>	0-50	1.80 - 2.70	65-79	2.34 - 2.72	95-109	2.48 - 2.70	Sheep	1.08 - 1.30	1150
		50-64	1.50 - 2.52	80-94	2.35 - 2.70	110+	2.39 - 2.62			
1-Sep-16	Brussels <a href="http://www.ontariosheep.org">www.ontariosheep.org</a>	0-50	1.42 - 2.57	65-79	2.27 - 2.48	95-109	2.28 - 2.37	Sheep	1.12 - 1.47	696
		50-64	2.17 - 2.81	80-94	2.33 - 2.42	110+	2.28 - 2.33			

**Alberta Lamb Producers does not endorse individual markets or verify prices provided.**

## Trends\* in auction price for heavy lambs in Alberta



\* Due to differences among auctions, prices are reported as 'trends' rather than averages.  
Graph is updated only for weeks with three markets reporting prices.