

Alberta Live Animal Markets: Visit individual market websites for more information about applicable auction fees and upcoming sales

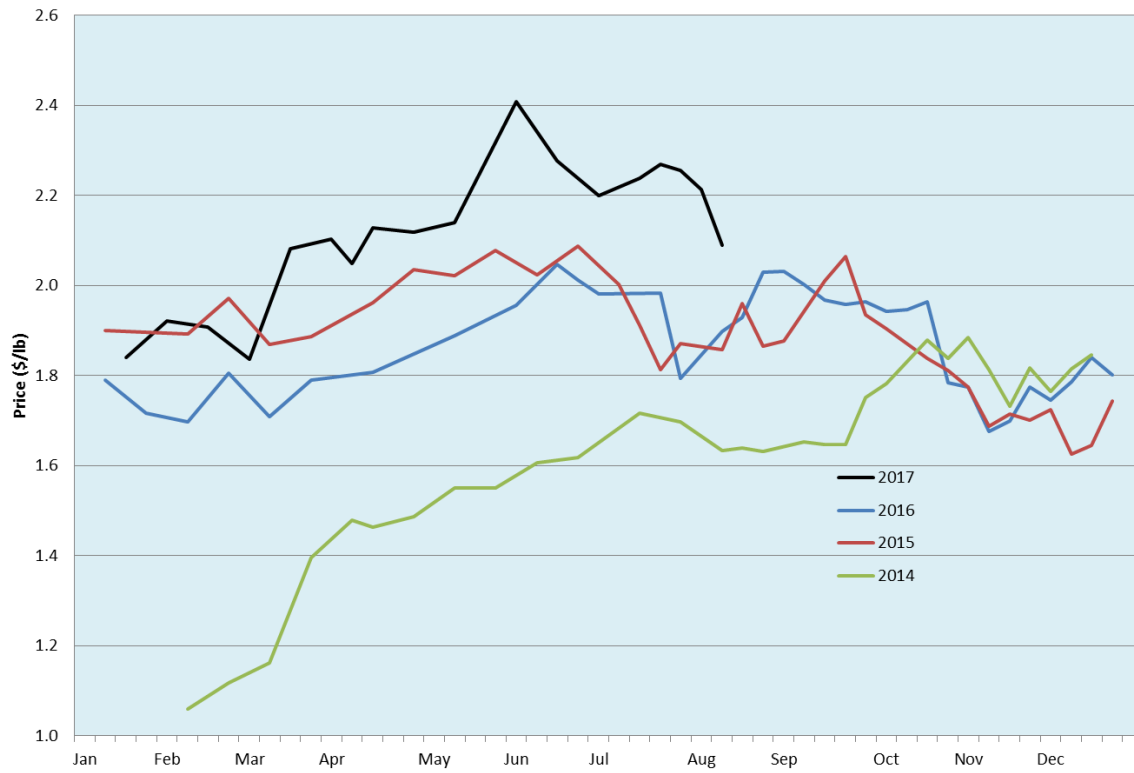
Date	Sale	Lambs (\$/lb)		Lambs (\$/lb)		Lambs (\$/lb)		Sheep(\$/lb): Bred ewes \$/hd		Head
		Weight (lbs)	low - high	Weight (lbs)	low - high	Weight (lbs)	low - high		low - high	
08-Aug-17	Beaver Hill www.beaverhillauctions.com	0-54: wool	2.25 - 2.48	70-85: wool	2.24 - 2.46	86-105:wool	2.15 - 2.44	Ewes: wool	0.96 - 1.38	1304
		0-54: hair	1.80 - 2.30			86-105:hair	2.15 - 2.29	Ewes: hair	0.95 - 1.61	
		55-69: wool	2.33 - 2.54	70-85: hair	2.17 - 2.37	106+:wool	1.95 - 2.16	Rams: wool	1.05 - 1.52	
		55-69: hair	2.18 - 2.51			106+:hair	1.80 - 2.05	Rams: hair	0.90 - 1.70	
No sale this week	VJV Westlock www.vjvauction.com	0-69: wool	- - -	70-85: wool	- - -	86-105: wool	- - -	Ewes: wool	- - -	-
						86-105: hair	- - -	Rams: wool	- - -	
		0-69: hair	- - -	70-85: hair	- - -	106+: wool	- - -	Rams:hair (\$/hd)	- - -	
						106+: hair	- - -	Bred Ewes:wool	- - -	
09-Aug-17	Olds Auction www.oldsaction.com	30-50	2.35 - 2.85	70-80	2.25 - 2.60	90-100	2.20 - 2.40	Ewes	0.75 - 1.50	416 <small>(incl.goats)</small>
		50-60	2.25 - 2.75	80-90	2.25 - 2.50	100-110	2.05 - 2.30	Rams	0.75 - 1.25	
		60-70	2.25 - 2.60			110+	2.00 - 2.25	Bred Ewes	- - -	
Sale prices not available	Picture Butte www.picturebutteauction.ca					Feeder	- - -	Slaughter Ewes	- - -	-
						Slaughter	- - -	Feeder Ewes	- - -	
								Ewe&lamb(s)	- - -	
								Bred ewes	- - -	
								Rams	- - -	

Ontario Live Animal Markets

07-Aug-17	OSI www.ontariostockyards.on.ca	0-65	2.60 - 3.00	65-80	2.30 - 2.75	95-110	2.35 - 2.45	Sheep	1.15 - 1.45	896
				80-95	2.25 - 2.57	110+	2.00 - 2.15	Thinner	1.20 - 1.50	
						Feeder	2.00 - 2.75	Rams	1.15 - 1.40	
08-Aug-17	OLEX www.ontariosheep.org	0-50	3.03 - 3.40	65-79	2.45 - 2.93	95-109	2.40 - 2.55	Sheep	1.20 - 1.58	1470
		50-64	2.60 - 2.16	80-94	2.48 - 2.63	110+	2.39 - 2.43			
07-Aug-17	Embrun www.ontariosheep.org	0-50	2.65 - 2.85	65-79	2.45 - 2.75	95-109	2.40 - 2.50	Sheep	1.12 - 1.62	481
		50-64	2.40 - 2.65	80-94	2.49 - 2.97	110+	1.95 - 2.50			
03-Aug-17	Brussels www.ontariosheep.org	0-50	2.77 - 3.04	65-79	2.84 - 3.39	95-109	2.18 - 2.39	Sheep	1.20 - 1.82	651
		50-64	2.77 - 3.28	80-94	2.34 - 2.65	110+	2.17 - 2.30			

Alberta Lamb Producers does not endorse individual markets or verify prices provided.

Trends* in auction price for heavy lambs in Alberta



*Due to differences among auctions, prices are reported as 'trends' rather than averages.
This graph is updated on weeks with three markets reporting prices.