

Alberta Live Animal Markets: Visit individual market websites for more information about applicable auction fees and upcoming sales

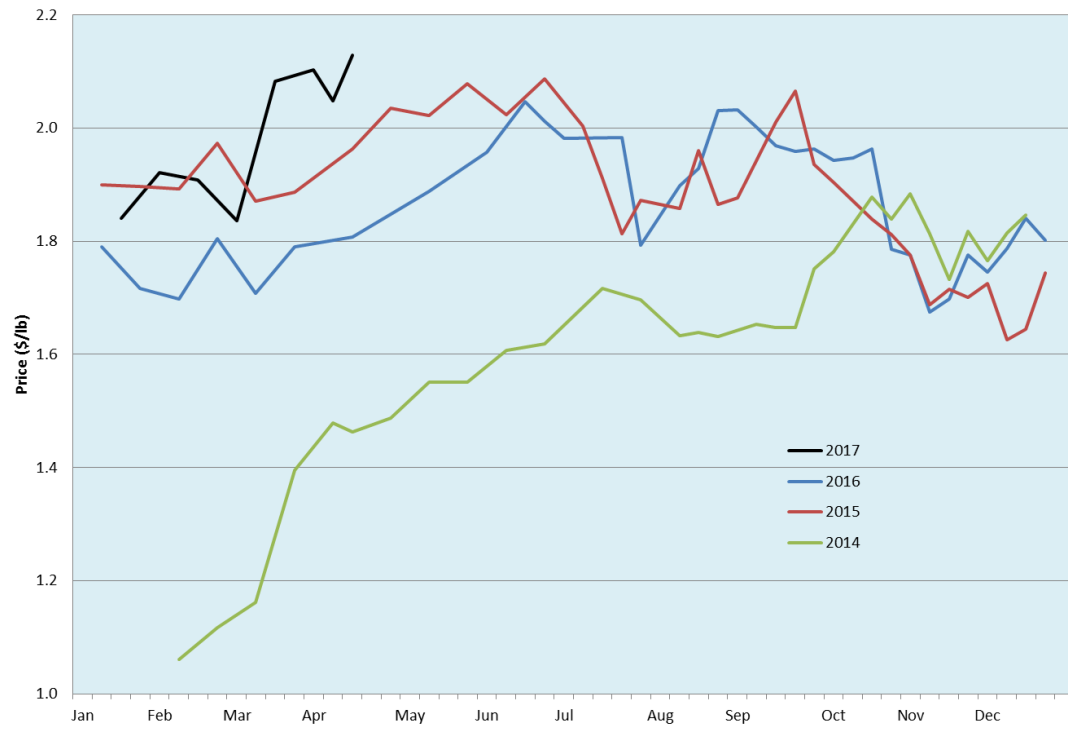
Date	Sale	Lambs (\$/lb)		Lambs (\$/lb)		Lambs (\$/lb)		Sheep(\$/lb): Bred ewes \$/hd		Head
		Weight (lbs)	low - high	Weight (lbs)	low - high	Weight (lbs)	low - high		low - high	
10-Apr-17	Beaver Hill www.beaverhillauctions.com	0-54: wool	2.20 - 3.00	70-85: wool	2.25 - 2.70	86-105:wool	2.00 - 2.15	Ewes: wool	0.94 - 1.36	445
		0-54: hair	2.00 - 2.69			86-105:hair	1.78 - 2.10	Ewes: hair	1.09 - 1.27	
		55-69: wool	2.20 - 3.10	70-85: hair	2.10 - 2.45	106+:wool	1.90 - 2.08	Rams: wool	0.80 - 1.42	
		55-69: hair	2.00 - 2.74			Bred Ewes	200 - 340			
						106+:hair	1.77 - 1.90	Ewe&Lamb(s)	260 - 400	
No sale this week	VJV Westlock www.vjvauction.com	0-69: wool	- - -	70-85: wool	- - -	86-105: wool	- - -	Ewes: wool	- - -	-
						86-105: hair	- - -	Ewes: hair	- - -	
		0-69: hair	- - -	70-85: hair	- - -	106+: wool	- - -	Rams: wool	- - -	
						106+: hair	- - -	Bred ewes:hair	- - -	
								Bred Ewes:wool	- - -	
11-Apr-17	Olds Auction www.oldsauction.com	30-50	2.85 - 3.10	70-80	2.50 - 2.60	90-100	2.10 - 2.20	Ewes	0.70 - 1.20	347 (incl.goats)
		50-60	2.70 - 3.00	80-90	2.40 - 2.50	100-110	2.00 - 2.10	Rams	0.80 - 1.15	
		60-70	2.50 - 2.60			110+	2.00 - 2.10	Bred Ewes	- - -	
8-Apr-17	Picture Butte www.picturebutteauction.ca					Feeder	2.65 - 2.81	Slaughter Ewes	1.08 - 1.15	-
						Slaughter	2.28 - 2.41	Feeder Ewes	1.22 - 1.38	
								Ewe&lamb(s)	- - -	
								Bred ewes	- - -	
								Rams	1.18 - 1.25	

Ontario Live Animal Markets

10-Apr-17	OSI www.ontariostockyards.on.ca	0-65	3.25 - 3.73	65-80	2.58 - 3.11	95-110	2.75 - 2.90	Sheep	1.20 - 1.40	2282
				80-95	2.61 - 2.98	110+	2.35 - 2.77	Thinner	1.25 - 1.35	
						Feeder	2.50 - 3.00	Rams	1.25 - 1.50	
11-Apr-17	OLEX www.ontariosheep.org	0-50	3.50 - 4.15	65-79	3.00 - 3.44	95-109	2.25 - 3.15	Sheep	1.20 - 1.60	1691
		50-64	3.32 - 3.90	80-94	3.00 - 3.20	110+	2.25 - 3.00			
10-Apr-17	Embrun www.ontariosheep.org	0-50	2.60 - 3.30	65-79	2.50 - 2.85	95-109	2.25 - 2.52	Sheep	0.98 - 1.42	482
		50-64	2.58 - 2.92	80-94	2.44 - 3.20	110+	1.50 - 1.60			
6-Apr-17	Brussels www.ontariosheep.org	0-50	3.35 - 4.20	65-79	3.10 - 3.81	95-109	2.62 - 2.87	Sheep	0.94 - 1.50	1558
		50-64	3.90 - 4.36	80-94	2.72 - 3.13	110+	2.59 - 2.69			

Alberta Lamb Producers does not endorse individual markets or verify prices provided.

Trends* in auction price for heavy lambs in Alberta



*Due to differences among auctions, prices are reported as 'trends' rather than averages.
This graph is updated on weeks with three markets reporting prices.