

Alberta Live Animal Markets: Visit individual market websites for more information about applicable auction fees and upcoming sales

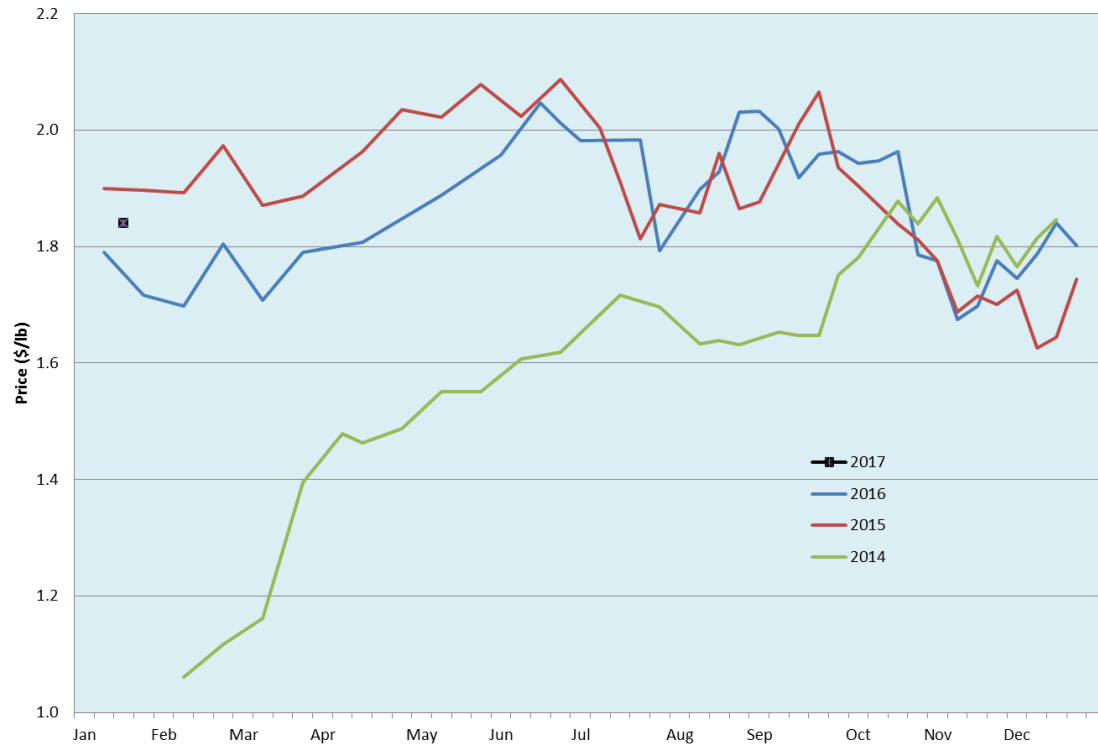
Date	Sale	Lambs (\$/lb)		Lambs (\$/lb)		Lambs (\$/lb)		Sheep(\$/lb): Bred ewes \$/hd		Head
		Weight (lbs)	low - high	Weight (lbs)	low - high	Weight (lbs)	low - high		low - high	
No sale this week	Beaver Hill www.beaverhillauctions.com	0-54: wool	- - -	70-85: wool	- - -	86-105:wool	- - -	Ewes: wool	- - -	-
		0-54: hair	- - -			86-105:hair	- - -	Ewes: hair	- - -	
		55-69: wool	- - -	70-85: hair	- - -	106+:wool	- - -	Rams: wool	- - -	
		55-69: hair	- - -			106+:hair	- - -	Rams: hair	- - -	
						Bred Ewes	- - -			
						Ewe&Lamb(s)	- - -			
No sale this week	VJV Westlock www.vjvauction.com	0-69: wool	- - -	70-85: wool	- - -	86-105: wool	- - -	Ewes: wool	- - -	-
						86-105: hair	- - -	Ewes: hair	- - -	
		0-69: hair	- - -	70-85: hair	- - -	106+: wool	- - -	Rams: wool	- - -	
						106+: hair	- - -	Rams: hair	- - -	
						Bred Ewes	- - -			
						Ewe&Lamb(s)	- - -			
24-Jan-17	Olds Auction www.oldsauction.com	30-50	2.00 - 2.40	70-80	2.00 - 2.10	90-100	2.00 - 2.10	Ewes	0.75 - 1.20	137 (incl.goats)
		50-60	2.20 - 2.30	80-90	2.00 - 2.10	100-110	1.75 - 1.85	Rams	0.70 - 0.90	
		60-70	2.10 - 2.20			110+	1.70 - 1.85	Bred Ewes	130 - 160	
21-Jan-17	Picture Butte www.picturebutteauction.ca					Feeder	2.08 - 2.13	Slaughter Ewes	0.88 - 0.95	-
						Slaughter	1.92 - 2.00	Feeder Ewes	- - -	
								Bred Ewes	- - -	
								Rams	- - -	

Ontario Live Animal Markets

23-Jan-17	OSI www.ontariostockyards.on.ca	0-65	2.70 - 3.55	65-80	2.80 - 3.26	95-110	2.13 - 2.20	Sheep	1.10 - 1.30	805
				80-95	2.32 - 2.52	110+	1.92 - 2.03	Thinner	1.20 - 1.40	
						Feeder	1.70 - 2.50	Rams	1.15 - 1.45	
24-Jan-17	OLEX www.ontariosheep.org	0-50	3.20 - 3.45	65-79	2.65 - 3.20	95-109	2.14 - 2.28	Sheep	0.85 - 1.50	1296
		50-64	3.05 - 3.38	80-94	2.38 - 2.68	110+	2.00 - 2.11			
23-Jan-17	Embrun www.ontariosheep.org	0-50	- - -	65-79	2.52 - 2.78	95-109	1.80 - 2.35	Sheep	1.05 - 1.40	190
		50-64	2.40 - 2.76	80-94	1.87 - 2.54	110+	1.55 - 1.90			
19-Jan-17	Brussels www.ontariosheep.org	0-50	3.35 - 3.60	65-79	2.50 - 3.30	95-109	2.07 - 2.27	Sheep	1.15 - 1.95	384
		50-64	3.35 - 3.90	80-94	2.20 - 2.80	110+	1.95 - 2.12			

Alberta Lamb Producers does not endorse individual markets or verify prices provided.

Trends* in auction price for heavy lambs in Alberta



*Due to differences among auctions, prices are reported as 'trends' rather than averages.
This graph is updated on weeks with three markets reporting prices.