

**Alberta Live Animal Markets: Visit individual market websites for more information about applicable auction fees and upcoming sales**

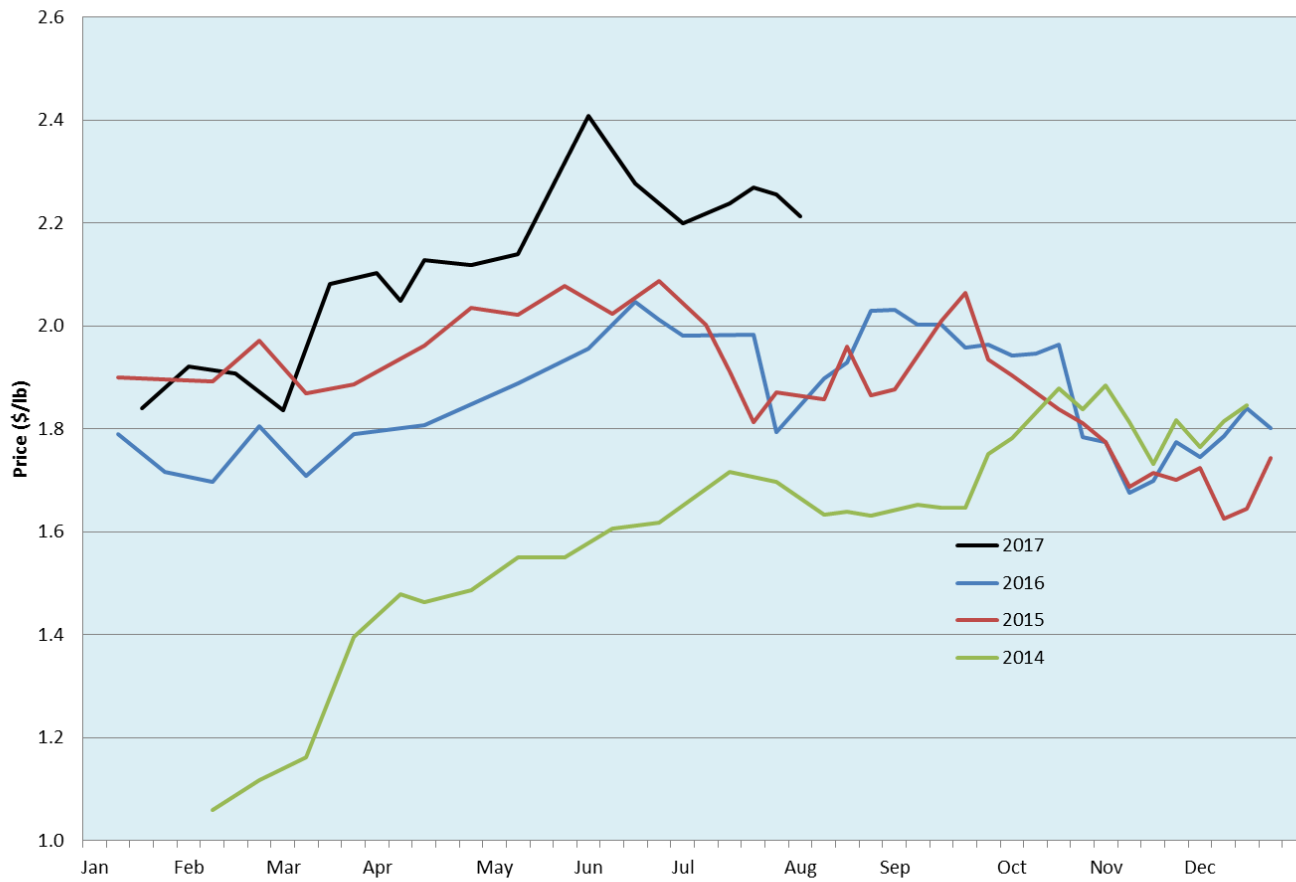
Date	Sale	Lambs (\$/lb)		Lambs (\$/lb)		Lambs (\$/lb)		Sheep(\$/lb): Bred ewes \$/hd		Head
		Weight (lbs)	low - high	Weight (lbs)	low - high	Weight (lbs)	low - high		low - high	
31-Jul-17	Beaver Hill <a href="http://www.beaverhillauctions.com">www.beaverhillauctions.com</a>	0-54: wool	2.25 - 2.65	70-85: wool	2.38 - 2.57	86-105:wool	2.16 - 2.48	Ewes: wool	0.96 - 1.38	814
		0-54: hair	2.10 - 2.60			86-105:hair	2.05 - 2.35	Ewes: hair	0.95 - 1.54	
		55-69: wool	2.38 - 2.60	70-85: hair	2.35 - 2.51	106+:wool	2.00 - 2.15	Rams: wool	0.92 - 1.30	
		55-69: hair	2.00 - 2.50			106+:hair	1.80 - 2.05	Rams: hair	1.00 - 1.20	
						Bred Ewes	- - -			
								Ewe&Lamb(s)	- - -	
01-Aug-17	VJV Westlock <a href="http://www.vjvauction.com">www.vjvauction.com</a>	0-69: wool	2.35 - 2.52	70-85: wool	2.29 - 2.48	86-105: wool	2.05 - 2.39	Ewes: wool	0.90 - 1.34	436
						86-105: hair	1.93 - 2.00	Ewes: hair	0.90 - 1.24	
		0-69: hair	- - -	70-85: hair	- - -	106+: wool	- - -	Rams: wool	1.12 - 1.50	
						106+: hair	- - -	Rams:hair (\$/hd)	200 - 220	
						Bred Ewes:wool	- - -			
								Ewe&Lamb:hair	200 - 260	
01-Aug-17	Olds Auction <a href="http://www.oldsaction.com">www.oldsaction.com</a>	30-50	2.50 - 3.00	70-80	2.40 - 2.70	90-100	2.40 - 2.50	Ewes	1.10 - 1.40	350
		50-60	2.45 - 2.85	80-90	2.40 - 2.60	100-110	2.30 - 2.40	Rams	1.00 - 1.30	
		60-70	2.40 - 2.75			110+	2.20 - 2.40	Bred Ewes	- - -	
									(incl.goats)	
29-Jul-17	Picture Butte <a href="http://www.picturebutteauction.ca">www.picturebutteauction.ca</a>					Feeder	2.42 - 2.58	Slaughter Ewes	1.00 - 1.06	-
						Slaughter	2.20 - 2.33	Feeder Ewes	1.08 - 1.12	
								Ewe&lamb(s)	- - -	
								Bred ewes	- - -	
								Rams	1.05 - 1.25	

**Ontario Live Animal Markets**

31-Jul-17	OSI <a href="http://www.ontariostockyards.on.ca">www.ontariostockyards.on.ca</a>	0-65	2.75 - 3.05	65-80	2.30 - 2.70	95-110	2.10 - 2.25	Sheep	1.15 - 1.45	649
				80-95	2.25 - 2.55	110+	2.00 - 2.05	Thinner	1.20 - 1.50	
						Feeder	2.00 - 2.75	Rams	1.15 - 1.40	
01-Aug-17	OLEX <a href="http://www.ontariosheep.org">www.ontariosheep.org</a>	0-50	3.10 - 3.83	65-79	2.49 - 2.91	95-109	2.38 - 2.58	Sheep	1.20 - 1.65	1629
		50-64	2.83 - 3.30	80-94	2.52 - 2.65	110+	2.37 - 2.50			
31-Jul-17	Embrun <a href="http://www.ontariosheep.org">www.ontariosheep.org</a>	0-50	2.05 - 3.10	65-79	2.50 - 2.80	95-109	2.36 - 2.47	Sheep	1.22 - 1.44	661
		50-64	2.60 - 2.90	80-94	2.35 - 2.56	110+	1.90 - 2.32			
27-Jul-17	Brussels <a href="http://www.ontariosheep.org">www.ontariosheep.org</a>	0-50	2.85 - 3.45	65-79	2.55 - 3.11	95-109	2.17 - 2.30	Sheep	1.02 - 1.60	612
		50-64	3.05 - 3.40	80-94	2.35 - 2.55	110+	2.00 - 2.21			

Alberta Lamb Producers does not endorse individual markets or verify prices provided.

### Trends\* in auction price for heavy lambs in Alberta



\*Due to differences among auctions, prices are reported as 'trends' rather than averages.  
This graph is updated on weeks with three markets reporting prices.