

Alberta Live Animal Markets: Visit individual market websites for more information about applicable auction fees and upcoming sales

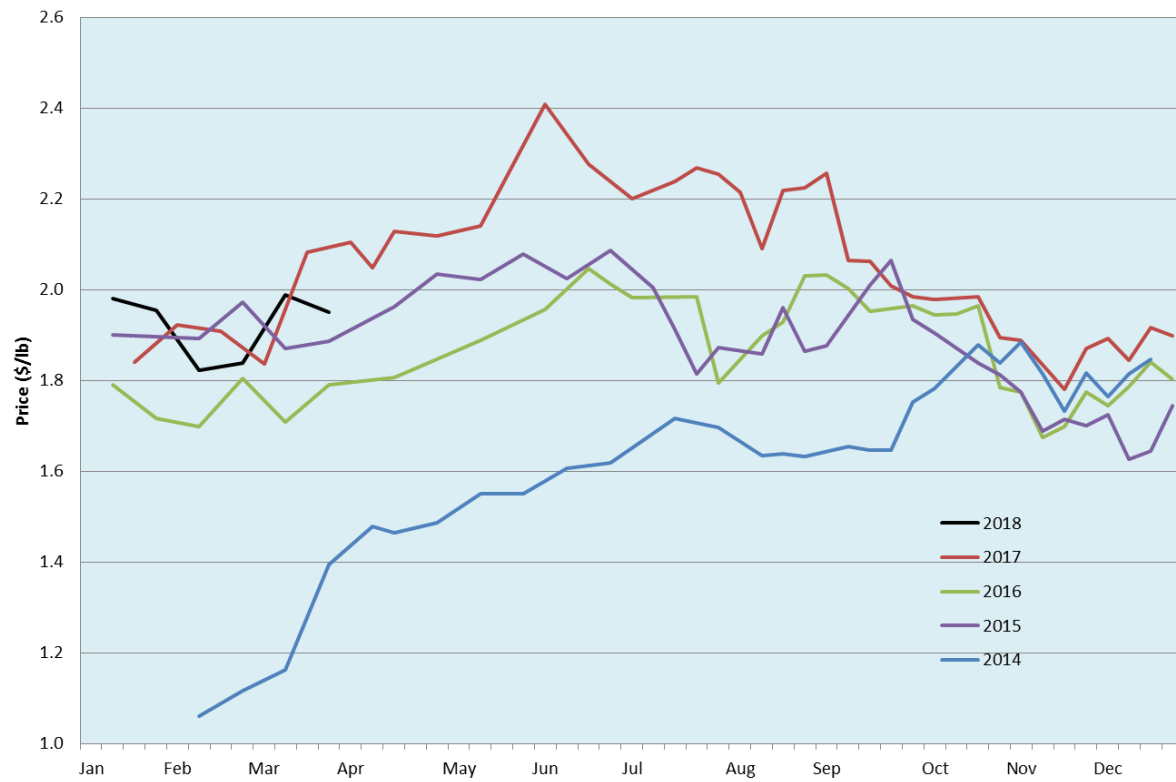
Date	Sale	Lambs (\$/lb)		Lambs (\$/lb)		Lambs (\$/lb)		Sheep(\$/lb): Bred ewes \$/hd		Head
		Weight (lbs)	low - high	Weight (lbs)	low - high	Weight (lbs)	low - high		low - high	
19-Mar-18	Beaver Hill www.beaverhillauctions.com	0-54: wool	2.30 - 2.90	70-85: wool	2.32 - 2.70	86-105:wool	1.92 - 2.27	Ewes: wool	0.95 - 1.64	948
		0-54: hair	2.10 - 2.44			86-105:hair	1.90 - 2.15	Ewes: hair	1.00 - 1.41	
		55-69: wool	2.43 - 2.90	70-85: hair	2.20 - 2.40	106+:wool	1.75 - 2.00	Rams: wool	0.95 - 1.54	
		55-69: hair	2.20 - 2.55			106+:hair	1.60 - 1.84	Rams: hair	1.00 - 1.25	
						Bred Ewes	250 - 375			
						Ewe&Lamb(s)	240 - 375			
20-Mar-18	VJV Westlock www.vjvauction.com	0-69: wool	1.97 - 4.10	70-85: wool	2.25 - 2.38	86-105: wool	1.72 - 2.20	Ewes: wool	0.85 - 1.50	335
						86-105: hair	- - -	Ewes: hair	0.90 - 1.20	
		0-69: hair	1.40 - 2.42	70-85: hair	- - -	106+: wool	1.70 - 2.15	Rams: wool	0.97 - 1.01	
						106+: hair	- - -	Rams:hair	1.00 - 1.02	
						Bred Ewes:wool	200 - 290			
						Ewe&Lamb:hair	- - -			
20-Mar-18	Olds Auction www.oldsaction.com	30-50	2.60 - 2.90	70-80	2.50 - 2.80	90-100	2.20 - 2.40	Ewes	0.90 - 1.40	408
		50-60	2.60 - 2.90	80-90	2.40 - 2.80	100-110	2.00 - 2.20	Rams	0.90 - 1.30	
		60-70	2.60 - 2.80			110+	1.90 - 2.15	Bred Ewes	- - -	
17-Mar-18	Picture Butte www.picturebutteauction.ca					Feeder	2.01 - 2.27	Slaughter Ewes	1.00 - 1.18	-
						Slaughter	1.92 - 1.98	Feeder Ewes	- - -	
								Ewe&lamb(s)	- - -	
								Bred ewes	310 - 395	
							Rams	- - -		

Ontario Live Animal Markets

19-Mar-18	OSI www.ontariostockyards.on.ca	0-65	3.29 - 4.38	65-80	2.95 - 4.10	95-110	2.34 - 2.70	Sheep	1.18 - 1.40	1551
				80-95	2.60 - 3.05	110+	1.70 - 2.00	Thinner	1.10 - 1.50	
						Feeder	2.50 - 3.00	Rams	1.20 - 1.40	
20-Mar-18	OLEX www.ontariosheep.org	0-50	3.65 - 4.38	65-79	2.95 - 3.80	95-109	2.63 - 3.00	Sheep	1.05 - 1.33	2669
		50-64	3.60 - 4.28	80-94	2.73 - 3.15	110+	2.15 - 2.20			
19-Mar-18	Embrun www.ontariosheep.org	0-50	3.10 - 3.20	65-79	2.95 - 3.60	95-109	2.15 - 2.70	Sheep	1.20 - 1.60	490
		50-64	3.07 - 3.75	80-94	2.68 - 3.17	110+	1.80 - 2.20			
15-Mar-18	Brussels www.ontariosheep.org	0-50	4.11 - 4.15	65-79	2.72 - 3.79	95-109	2.38 - 2.53	Sheep	1.10 - 1.69	887
		50-64	3.77 - 4.02	80-94	2.40 - 2.88	110+	1.97 - 2.13			

Alberta Lamb Producers does not endorse individual markets or verify prices provided.

Trends* in auction price for heavy lambs in Alberta



*Due to differences among auctions, prices are reported as 'trends' rather than averages.
 This graph is updated on weeks with two or more markets reporting prices.