

**Alberta Live Animal Markets: Visit individual market websites for more information about applicable auction fees and upcoming sales**

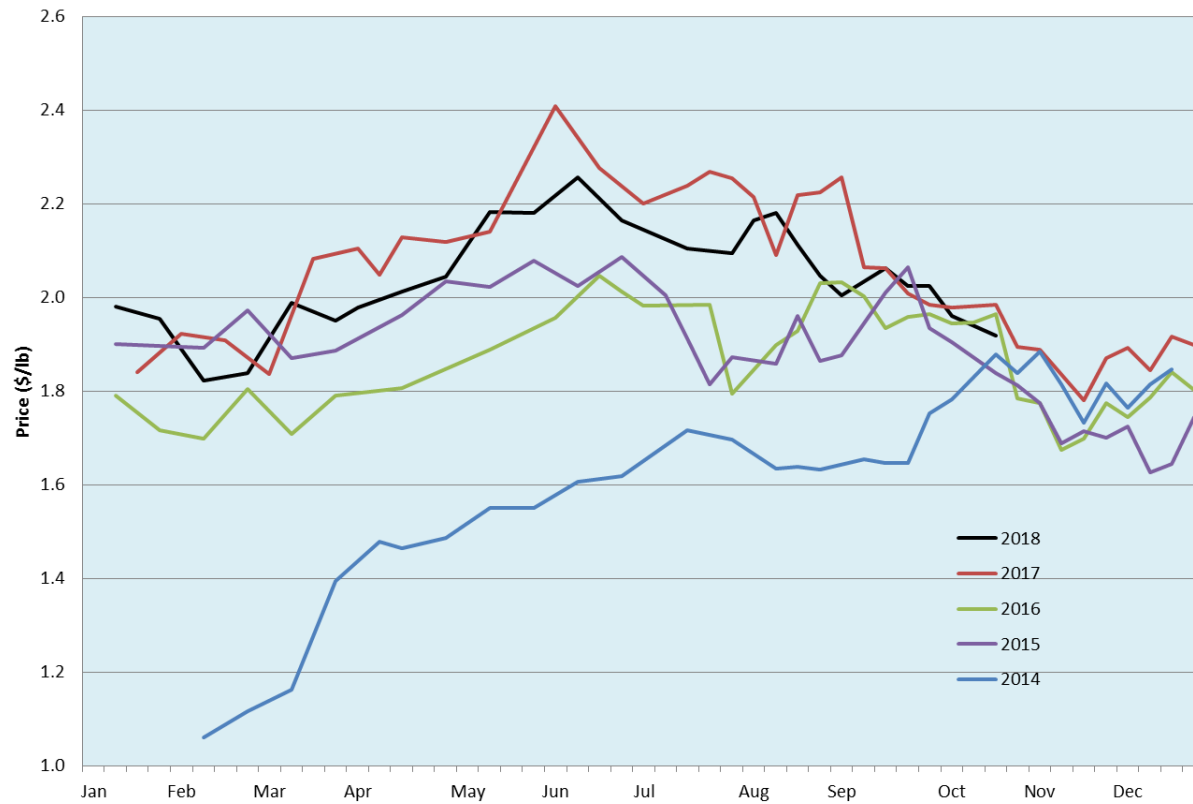
Date	Sale	Lambs (\$/lb)		Lambs (\$/lb)		Lambs (\$/lb)		Sheep(\$/lb): Bred ewes \$/hd		Head
		Weight (lbs)	low - high	Weight (lbs)	low - high	Weight (lbs)	low - high		low - high	
15-Oct-18	Beaver Hill <a href="http://www.beaverhillauctions.com">www.beaverhillauctions.com</a>	0-54: wool	1.75 - 2.00	70-85: wool	1.85 - 1.97	86-105:wool	1.81 - 2.01	Ewes: wool	0.80 - 1.74	1353
		0-54: hair	1.40 - 1.90			86-105:hair	1.73 - 1.87	Ewes: hair	0.78 - 1.46	
		55-69: wool	1.90 - 2.18	70-85: hair	1.65 - 1.88	106+:wool	1.80 - 1.99	Rams: wool	0.82 - 1.06	
		55-69: hair	1.60 - 1.90			106+:hair	1.70 - 1.80	Rams: hair	0.89 - 1.65	
						Bred Ewes	190 - 275			
						Ewe&Lamb(s)	- - -			
16-Oct-18	VJV Westlock <a href="http://www.vjvauction.com">www.vjvauction.com</a>	0-69: wool	1.50 - 2.16	70-85: wool	1.80 - 1.93	86-105: wool	1.78 - 1.97	Ewes: wool	0.60 - 1.30	932
						86-105: hair	1.72 - 1.82	Ewes: hair	0.73 - 0.98	
		0-69: hair	1.30 - 1.88	70-85: hair	1.30 - 1.75	106+: wool	1.78 - 1.98	Rams: wool	0.70 - 0.81	
						106+: hair	- - -	Rams: hair	- - -	
						Bred Ewes:wool	140 - 190			
						Ewe&Lamb:hair	- - -			
16-Oct-18	Olds Auction <a href="http://www.oldsauktion.com">www.oldsauktion.com</a>	30-50	1.70 - 2.00	70-80	1.80 - 1.85	90-100	1.80 - 1.95	Ewes	0.65 - 1.00	544
		50-60	1.75 - 1.85	80-90	1.80 - 1.90	100-110	1.80 - 1.95	Rams	0.65 - 1.00	
		60-70	1.75 - 1.85			110+	1.80 - 1.95	Bred Ewes	- - -	
13-Oct-18	Picture Butte <a href="http://www.picturebutteauction.ca">www.picturebutteauction.ca</a>					Feeder	1.92 - 2.03	Slaughter Ewes	- - -	-
						Slaughter	1.92 - 2.03	Feeder Ewes	- - -	
								Ewe&lamb(s)	- - -	
								Bred ewes	- - -	
								Rams	- - -	

**Ontario Live Animal Markets**

15-Oct-18	OSI <a href="http://www.ontariostockyards.on.ca">www.ontariostockyards.on.ca</a>	0-65	2.20 - 2.58	65-80	1.95 - 2.38	95-110	2.23 - 2.35	Sheep	1.20 - 1.40	824
				80-95	2.12 - 2.48	110+	2.14 - 2.30	Thinner	1.15 - 1.40	
						Feeder	1.70 - 2.30	Rams	1.20 - 1.45	
16-Oct-18	OLEX <a href="http://www.ontariosheep.org">www.ontariosheep.org</a>	0-50	2.55 - 3.10	65-79	2.08 - 2.55	95-109	2.10 - 2.39	Sheep	1.00 - 1.41	1267
		50-64	2.28 - 2.73	80-94	2.10 - 2.45	110+	2.15 - 2.35			
15-Oct-18	Embrun <a href="http://www.ontariosheep.org">www.ontariosheep.org</a>	0-50	2.25 - 2.25	65-79	1.87 - 2.35	95-109	2.06 - 2.20	Sheep	1.22 - 1.44	372
		50-64	1.90 - 2.36	80-94	1.95 - 2.17	110+	1.75 - 2.12			
11-Oct-18	Brussels <a href="http://www.ontariosheep.org">www.ontariosheep.org</a>	0-50	0.72 - 2.10	65-79	2.25 - 2.69	95-109	2.22 - 2.30	Sheep	1.25 - 1.46	377
		50-64	1.60 - 2.00	80-94	2.21 - 2.35	110+	2.12 - 2.23			

Alberta Lamb Producers does not endorse individual markets or verify prices provided.

### Trends\* in auction price for heavy lambs in Alberta



\*Due to differences among auctions, prices are reported as 'trends' rather than averages.  
This graph is updated on weeks with two or more markets reporting prices.