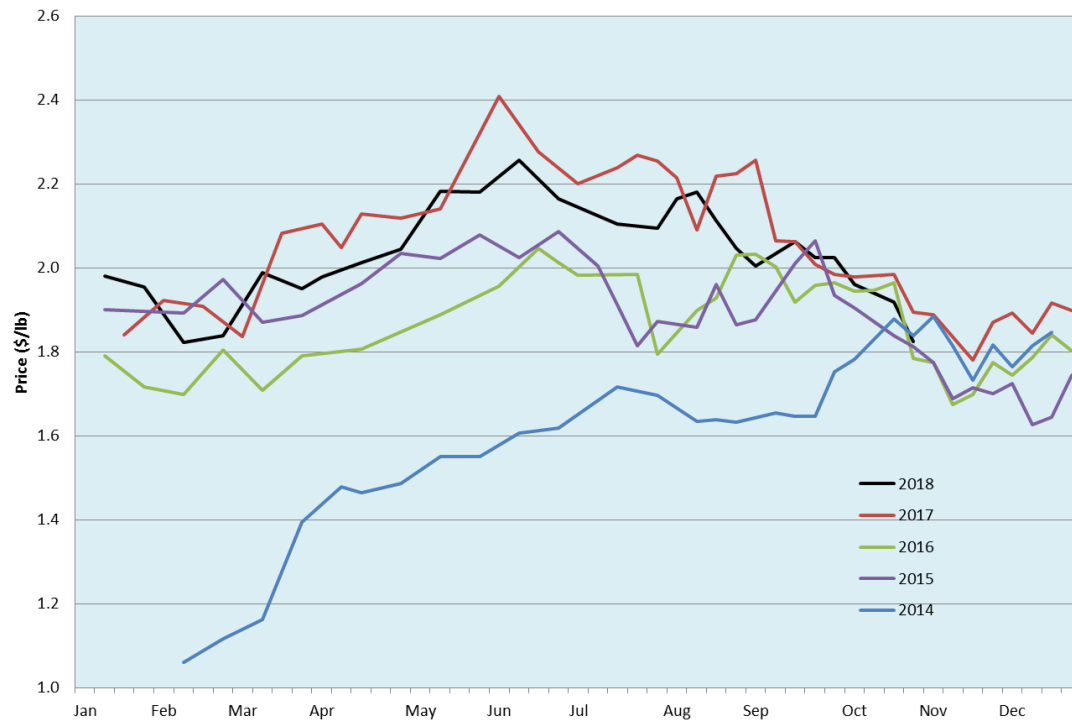


Alberta Live Animal Markets: Visit individual market websites for more information about applicable auction fees and upcoming sales										
Date	Sale	Lambs (\$/lb)		Lambs (\$/lb)		Lambs (\$/lb)		Sheep(\$/lb): Bred ewes \$/hd		Head
		Weight (lbs)	low - high	Weight (lbs)	low - high	Weight (lbs)	low - high		low - high	
22-Oct-18	Beaver Hill www.beaverhillauctions.com	0-54: wool	1.90 - 2.20	70-85: wool	1.85 - 2.03	86-105:wool	1.81 - 2.00	Ewes: wool	0.90 - 1.35	1325
		0-54: hair	1.69 - 1.94			86-105:hair	1.73 - 1.87	Ewes: hair	0.80 - 1.35	
		55-69: wool	1.90 - 2.25	70-85: hair	1.70 - 1.87	106+:wool	1.80 - 1.91	Rams: wool	0.82 - 1.28	
		55-69: hair	1.64 - 1.95			106+:hair	1.70 - 1.85	Rams: hair	0.77 - 1.28	
						Bred Ewes	190 - 260			
						Ewe&Lamb(s)	- - -			
23-Oct-18	VJV Westlock www.vjvauction.com	0-69: wool	- - -	70-85: wool	- - -	86-105: wool	- - -	Ewes: wool	- - -	-
						86-105: hair	- - -	Ewes: hair	- - -	
		0-69: hair	- - -	70-85: hair	- - -	106+: wool	- - -	Rams: wool	- - -	
						106+: hair	- - -	Rams: hair	- - -	
						Bred Ewes:wool	- - -			
						Ewe&Lamb:hair	- - -			
23-Oct-18	Olds Auction www.oldsauuction.com	30-50	1.80 - 1.90	70-80	1.70 - 1.80	90-100	1.70 - 1.80	Ewes	0.70 - 1.00	331 (incl.goats)
		50-60	1.80 - 1.90	80-90	1.70 - 1.80	100-110	1.70 - 1.80	Rams	0.85 - 1.00	
		60-70	1.80 - 1.90			110+	1.70 - 1.80	Bred Ewes	- - -	
20-Oct-18	Picture Butte www.picturebutteauction.ca					Feeder	1.80 - 1.92	Slaughter Ewes	0.86 - 1.02	-
						Slaughter	1.78 - 1.95	Feeder Ewes	- - -	
								Ewe&lamb(s)	- - -	
								Bred ewes	- - -	
								Rams	- - -	
Ontario Live Animal Markets										
22-Oct-18	OSI www.ontariostockyards.on.ca	0-65	2.07 - 2.65	65-80	2.02 - 2.40	95-110	2.04 - 2.30	Sheep	1.20 - 1.40	1116
				80-95	1.97 - 2.32	110+	2.02 - 2.20	Thinner	1.15 - 1.50	
						Feeder	1.50 - 2.00	Rams	1.20 - 1.50	
23-Oct-18	OLEX www.ontariosheep.org	0-50	2.10 - 2.73	65-79	2.10 - 2.41	95-109	1.98 - 2.28	Sheep	1.25 - 1.55	1495
		50-64	2.30 - 2.45	80-94	2.00 - 2.33	110+	1.49 - 2.25			
22-Oct-18	Embrun www.ontariosheep.org	0-50	1.60 - 1.90	65-79	1.75 - 2.02	95-109	1.88 - 1.96	Sheep	1.28 - 1.48	484
		50-64	1.88 - 2.30	80-94	1.75 - 2.20	110+	1.37 - 1.70			
18-Oct-18	Brussels www.ontariosheep.org	0-50	3.50 - 3.50	65-79	2.02 - 2.30	95-109	2.17 - 2.21	Sheep	1.17 - 1.37	370
		50-64	2.27 - 2.65	80-94	2.14 - 2.27	110+	1.87 - 2.19			
Alberta Lamb Producers does not endorse individual markets or verify prices provided.										

Trends* in auction price for heavy lambs in Alberta



*Due to differences among auctions, prices are reported as 'trends' rather than averages.
This graph is updated on weeks with two or more markets reporting prices.