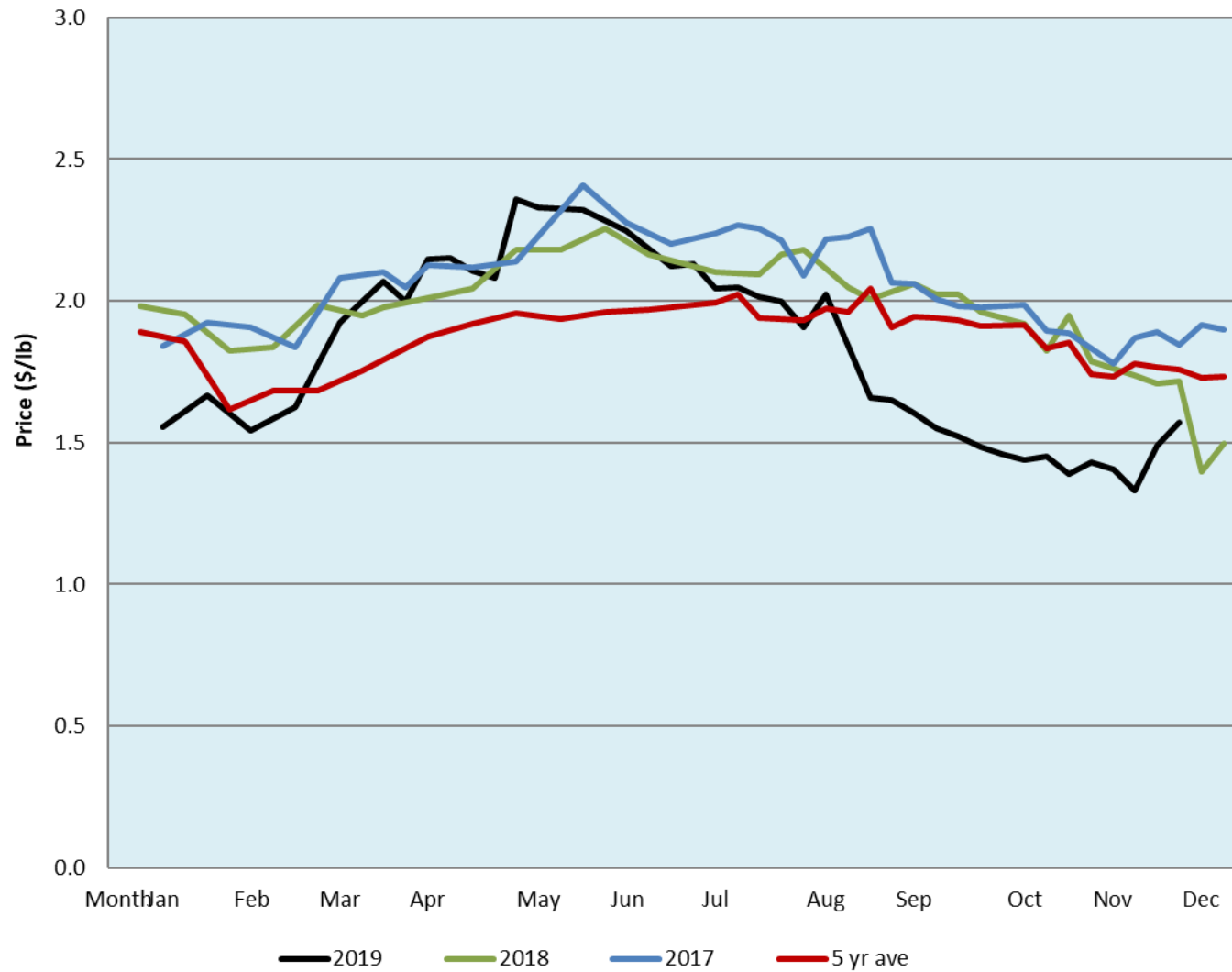


Alberta Live Animal Markets: Visit individual market websites for more information about applicable auction fees and upcoming sales										
Date	Sale	Lambs (\$/lb)		Lambs (\$/lb)		Lambs (\$/lb)		Sheep(\$/lb): Bred ewes \$/hd		Head
		Weight (lbs)	low - high	Weight (lbs)	low - high	Weight (lbs)	low - high		low - high	
9-Dec-19	Beaver Hill www.beaverhillauctions.com	0-54: wool	1.70 - 2.20	70-85: wool	1.92 - 2.23	86-105:wool	1.70 - 2.05	Ewes: wool	1.00 - 1.22	700
		0-54: hair	1.40 - 1.75			86-105:hair	1.68 - 2.00	Ewes: hair	1.02 - 1.23	
		55-69: wool	2.02 - 2.32	70-85: hair	1.81 - 2.03	106+:wool	1.50 - 1.78	Rams: wool	0.91 - 1.14	
		55-69: hair	1.95 - 2.28			Bred Ewes	2 - 3			
						106+:hair	1.50 - 1.68	Ewe&Lamb(s)	- - -	
No sale this week	VJV Westlock www.vjvauction.com	0-69: wool	- - -	70-85: wool	- - -	86-105: wool	- - -	Ewes: wool	- - -	-
						86-105: hair	- - -	Ewes: hair	- - -	
		0-69: hair	- - -	70-85: hair	- - -	106+: wool	- - -	Rams: wool	- - -	
						106+: hair	- - -	Rams: hair	- - -	
								Bred Ewes:wool	- - -	
10-Dec-19	Olds Auction www.oldsauction.com	30-50	1.00 - 1.30	70-80	2.00 - 2.10	90-100	1.40 - 1.60	Ewes	1.00 - 1.30	151 (incl.goats)
		50-60	1.00 - 2.20	80-90	1.40 - 1.60	100-110	1.40 - 1.60	Rams	- - -	
		60-70	2.00 - 2.20			110+	1.40 - 1.60	Bred Ewes	- - -	
Not Available	Picture Butte www.picturebutteauction.ca					Feeder	- - -	Slaughter Ewes	- - -	-
						Slaughter	- - -	Feeder Ewes	- - -	
								Ewe&lamb(s)	- - -	
								Bred ewes	- - -	
								Rams	- - -	
Ontario Live Animal Markets										
9-Dec-19	OSI www.ontariosheep.org	0-50	2.15 - 1.50	65-80	1.73 - 2.60	95-110	1.48 - 2.13	Sheep	1.15 - 1.50	2154
		50-64	2.70 - 2.85	80-95	1.70 - 2.60	110+	1.50 - 2.10			
10-Dec-19	OLEX www.ontariosheep.org	0-50	2.85 - 3.50	65-79	2.20 - 2.60	95-109	1.73 - 1.95	Sheep	1.40 - 1.69	2799
		50-64	2.33 - 3.88	80-94	1.90 - 2.30	110+	1.50 - 1.70			
9-Dec-19	Embrun www.ontariosheep.org	0-50	2.60 - 3.00	65-79	2.32 - 2.70	95-109	1.82 - 2.20	Sheep	1.26 - 1.48	586
		50-64	2.45 - 2.95	80-94	2.10 - 2.50	110+	1.67 - 2.16			
5-Dec-19	Brussels www.ontariosheep.org	0-50	3.40 - 4.20	65-79	2.06 - 2.90	95-109	1.69 - 1.96	Sheep	1.17 - 1.48	372
		50-64	2.45 - 3.62	80-94	1.75 - 2.10	110+	1.66 - 1.84			
Alberta Lamb Producers does not endorse individual markets or verify prices provided.										

Trends* in auction price for heavy lambs in Alberta



*Due to differences among auctions, prices are reported as 'trends' rather than averages.
This graph is updated on weeks with two or more markets reporting prices.