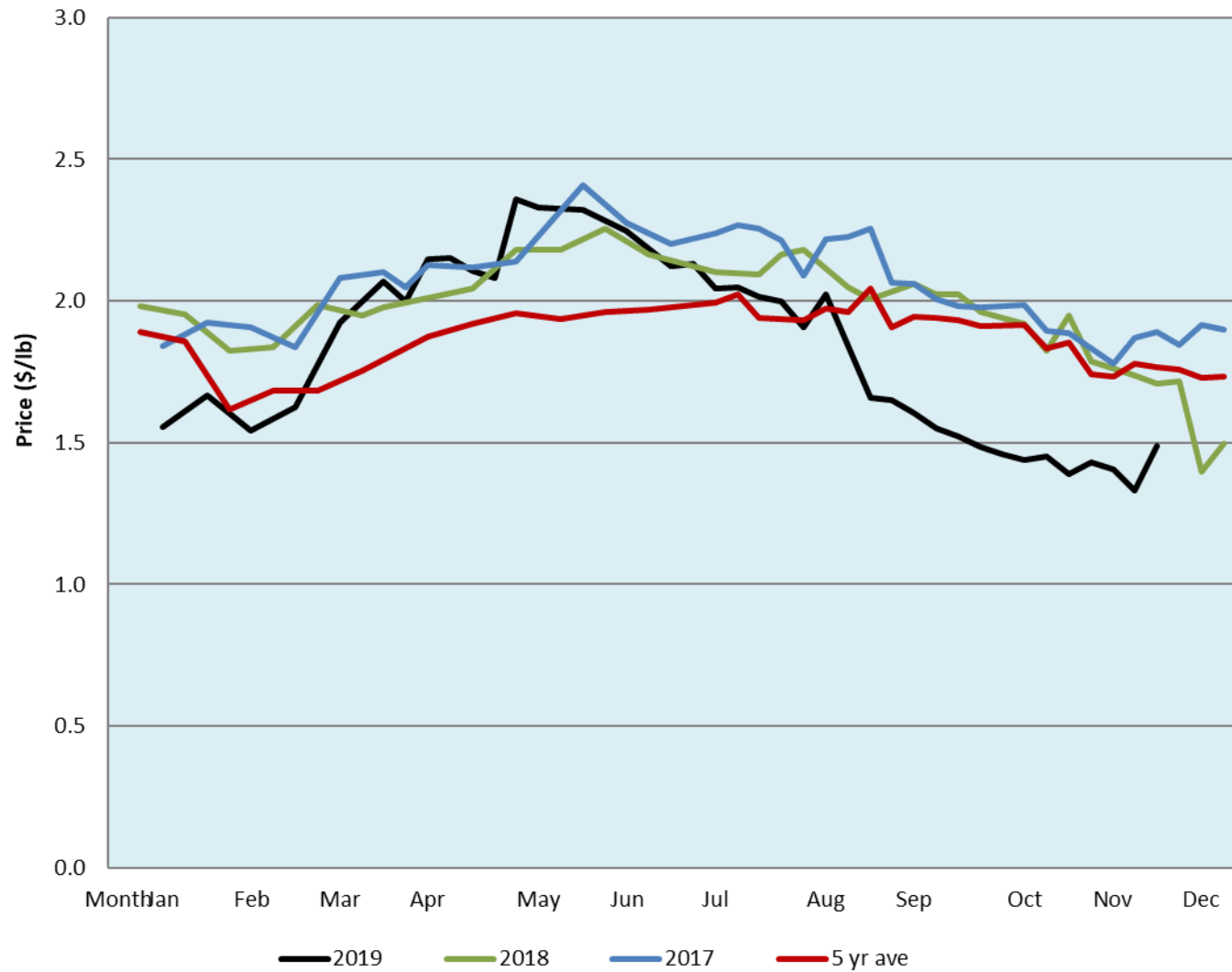


Alberta Live Animal Markets: Visit individual market websites for more information about applicable auction fees and upcoming sales										
Date	Sale	Lambs (\$/lb)		Lambs (\$/lb)		Lambs (\$/lb)		Sheep(\$/lb): Bred ewes \$/hd		Head
		Weight (lbs)	low - high	Weight (lbs)	low - high	Weight (lbs)	low - high		low - high	
25-Nov-19	Beaver Hill www.beaverhillauctions.com	0-54: wool	1.60 - 1.76	70-85: wool	1.60 - 1.85	86-105:wool	1.54 - 2.05	Ewes: wool	0.90 - 1.49	840
		0-54: hair	1.50 - 1.65			86-105:hair	1.51 - 1.77	Ewes: hair	0.77 - 1.02	
		55-69: wool	1.65 - 1.92	70-85: hair	1.46 - 1.80	106+:wool	1.50 - 1.84	Rams: wool	0.90 - 1.17	
		55-69: hair	1.55 - 1.83			Bred Ewes	2 - 2			
						106+:hair	1.40 - 1.52	Ewe&Lamb(s)	- - -	
No sale this week	VJV Westlock www.vjvauction.com	0-69: wool	1.50 - 1.85	70-85: wool	1.60 - 1.80	86-105: wool	1.45 - 1.85	Ewes: wool	0.75 - 1.30	-
						86-105: hair	- - -	Ewes: hair	0.75 - 0.80	
		0-69: hair	1.50 - 1.65	70-85: hair	1.60 - 1.75	106+: wool	1.30 - 1.55	Rams: wool	0.80 - 1.10	
						Bred Ewes:wool	- - -	Rams: hair	0.80 - 1.00	
						106+: hair	- - -	Ewe&Lamb:hair	- - -	
26-Nov-19	Olds Auction www.oldsauction.com	30-50	1.00 - 1.50	70-80	1.10 - 1.40	90-100	1.10 - 1.30	Ewes	0.90 - 1.10	176 (incl.goats)
		50-60	1.00 - 1.50	80-90	1.10 - 1.40	100-110	1.10 - 1.30	Rams	0.90 - 1.30	
		60-70	1.00 - 1.50			110+	1.10 - 1.30	Bred Ewes	- - -	
23-Nov-19	Picture Butte www.picturebutteauction.ca					Feeder	1.59 - 1.63	Slaughter Ewes	0.79 - 0.88	-
						Slaughter	1.57 - 1.63	Feeder Ewes	- - -	
								Ewe&lamb(s)	- - -	
								Bred ewes	- - -	
								Rams	- - -	
Ontario Live Animal Markets										
25-Nov-19	OSI www.ontariosheep.org	0-50	1.00 - 1.50	65-80	2.18 - 2.60	95-110	1.96 - 2.13	Sheep	1.20 - 1.50	1415
		50-64	2.10 - 2.85	80-95	2.07 - 2.60	110+	1.95 - 2.10			
26-Nov-19	OLEX www.ontariosheep.org	0-50	2.95 - 3.35	65-79	2.18 - 2.63	95-109	1.75 - 2.08	Sheep	0.93 - 1.45	2084
		50-64	2.50 - 3.33	80-94	1.93 - 2.43	110+	1.58 - 2.05			
25-Nov-19	Embrun www.ontariosheep.org	0-50	2.75 - 2.77	65-79	2.24 - 2.52	95-109	1.82 - 2.22	Sheep	1.26 - 1.40	392
		50-64	2.45 - 2.75	80-94	2.00 - 2.32	110+	1.77 - 1.77			
21-Nov-19	Brussels www.ontariosheep.org	0-50	0.50 - 2.70	65-79	2.10 - 2.52	95-109	1.80 - 1.95	Sheep	0.90 - 1.35	361
		50-64	1.90 - 2.41	80-94	1.93 - 2.14	110+	1.29 - 1.74			
Alberta Lamb Producers does not endorse individual markets or verify prices provided.										

Trends* in auction price for heavy lambs in Alberta



*Due to differences among auctions, prices are reported as 'trends' rather than averages. This graph is updated on weeks with two or more markets reporting prices.