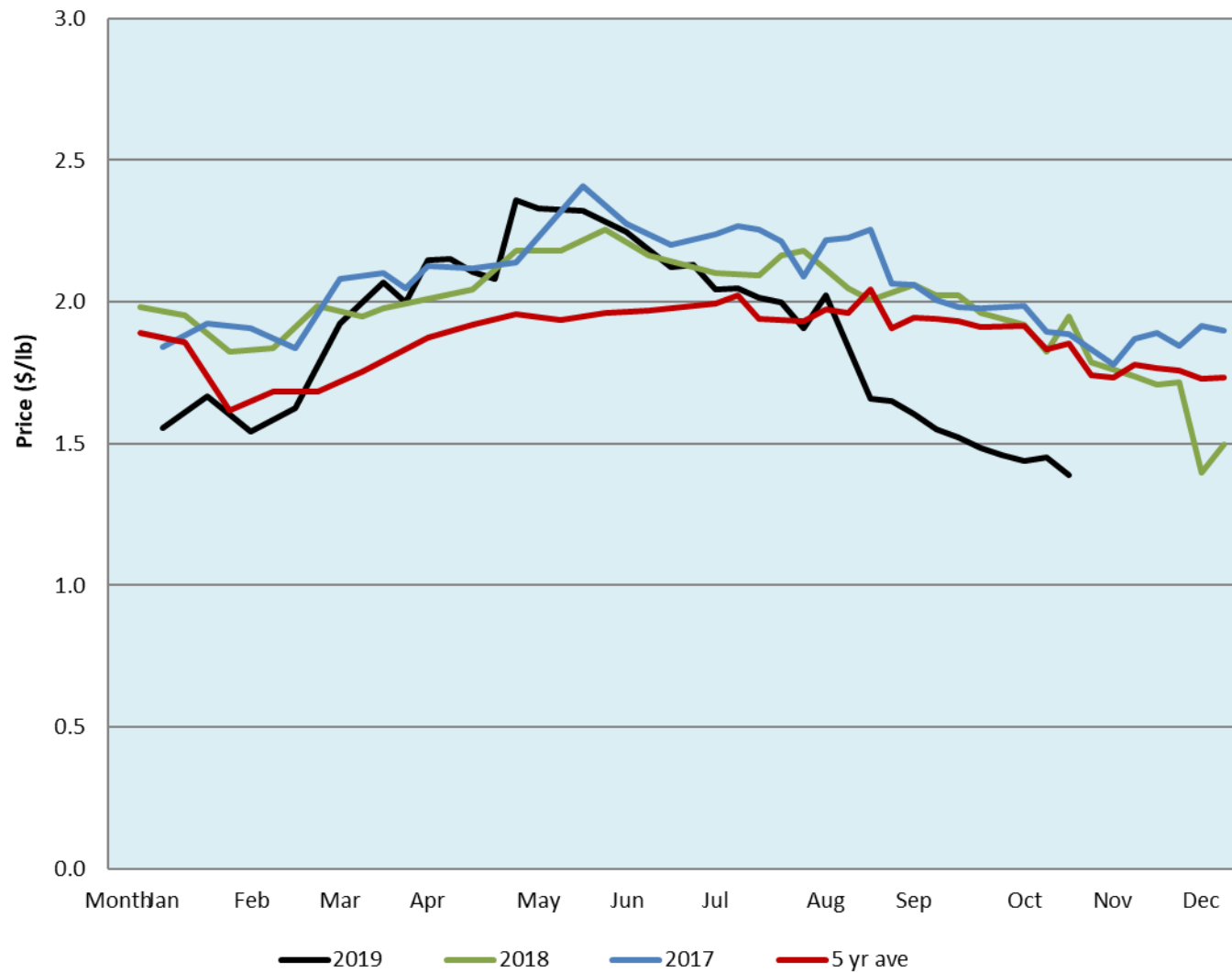


Alberta Live Animal Markets: Visit individual market websites for more information about applicable auction fees and upcoming sales										
Date	Sale	Lambs (\$/lb)		Lambs (\$/lb)		Lambs (\$/lb)		Sheep(\$/lb): Bred ewes \$/hd		Head
		Weight (lbs)	low - high	Weight (lbs)	low - high	Weight (lbs)	low - high		low - high	
28-Oct-19	Beaver Hill www.beaverhillauctions.com	0-54: wool	1.20 - 1.78	70-85: wool	1.48 - 1.80	86-105:wool	1.45 - 1.66	Ewes: wool	0.85 - 1.31	853
		0-54: hair	0.80 - 1.20			86-105:hair	1.26 - 1.48	Ewes: hair	0.80 - 1.22	
		55-69: wool	1.35 - 1.85	70-85: hair	1.40 - 1.59	106+:wool	1.30 - 1.51	Rams: wool	0.80 - 0.95	
		55-69: hair	1.20 - 1.58			Bred Ewes	2 - 2			
						106+:hair	1.25 - 1.40	Ewe&Lamb(s)	- - -	
No sale this week	VJV Westlock www.vjvauction.com	0-69: wool	- - -	70-85: wool	- - -	86-105: wool	- - -	Ewes: wool	- - -	-
						86-105: hair	- - -	Ewes: hair	- - -	
		0-69: hair	- - -	70-85: hair	- - -	106+: wool	- - -	Rams: wool	- - -	
						106+: hair	- - -	Rams: hair	- - -	
								Bred Ewes:wool	- - -	
29-Oct-19	Olds Auction www.oldsauction.com	30-50	1.00 - 1.50	70-80	1.50 - 1.60	90-100	1.30 - 1.40	Ewes	0.90 - 1.20	214 (incl.goats)
		50-60	1.20 - 1.50	80-90	1.40 - 1.50	100-110	1.30 - 1.40	Rams	0.80 - 1.00	
		60-70	1.50 - 1.70			110+	1.30 - 1.40	Bred Ewes	- - -	
26-Oct-19	Picture Butte www.picturebutteauction.ca					Feeder	1.48 - 1.56	Slaughter Ewes	0.90 - 0.98	-
						Slaughter	1.38 - 1.45	Feeder Ewes	- - -	
								Ewe&lamb(s)	- - -	
								Bred ewes	- - -	
								Rams	- - -	
Ontario Live Animal Markets										
29-Oct-19	OSI www.ontariosheep.org	0-50	2.35 - 2.55	65-80	1.75 - 2.45	95-110	1.60 - 1.88	Sheep	1.18 - 1.50	1477
		50-64	2.02 - 2.58	80-95	1.74 - 2.18	110+	1.53 - 1.79			
29-Oct-19	OLEX www.ontariosheep.org	0-50	2.75 - 2.93	65-79	2.05 - 2.65	95-109	1.75 - 1.93	Sheep	0.93 - 1.41	2051
		50-64	2.48 - 2.98	80-94	1.90 - 2.50	110+	1.54 - 1.78			
28-Oct-19	Embrun www.ontariosheep.org	0-50	2.40 - 2.66	65-79	2.12 - 2.47	95-109	1.72 - 2.07	Sheep	1.18 - 1.45	422
		50-64	2.44 - 2.75	80-94	1.77 - 2.17	110+	1.72 - 1.79			
24-Oct-19	Brussels www.ontariosheep.org	0-50	3.30 - 3.30	65-79	1.70 - 2.29	95-109	1.60 - 1.82	Sheep	1.26 - 1.47	322
		50-64	2.50 - 3.50	80-94	1.83 - 2.23	110+	1.51 - 1.69			
Alberta Lamb Producers does not endorse individual markets or verify prices provided.										

Trends* in auction price for heavy lambs in Alberta



*Due to differences among auctions, prices are reported as 'trends' rather than averages. This graph is updated on weeks with two or more markets reporting prices.