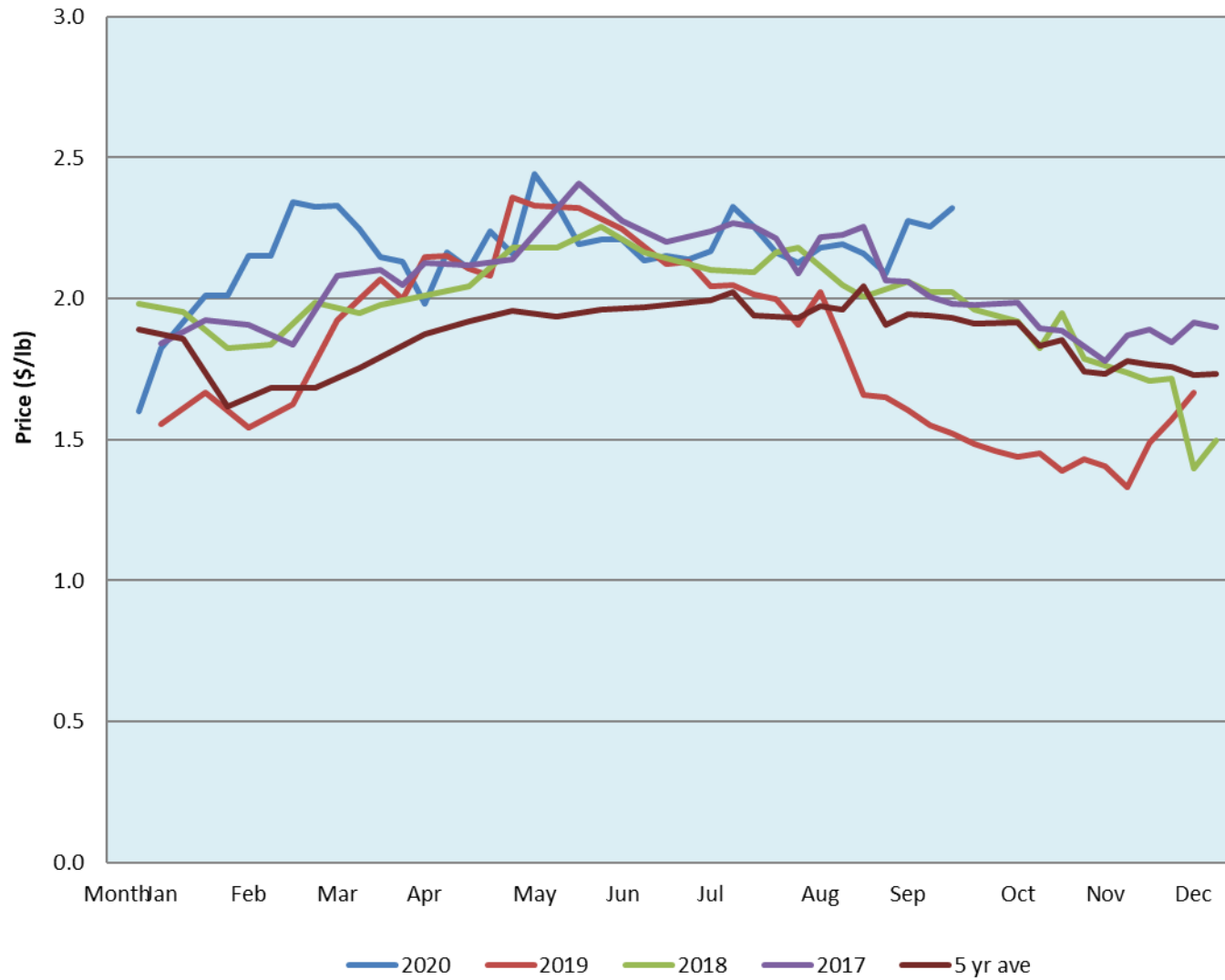


Alberta Live Animal Markets: Visit individual market websites for more information about applicable auction fees and upcoming sales										
Date	Sale	Lambs (\$/lb)		Lambs (\$/lb)		Lambs (\$/lb)		Sheep(\$/lb): Bred ewes \$/hd		Head
		Weight (lbs)	low - high	Weight (lbs)	low - high	Weight (lbs)	low - high		low - high	
28-Sep-20	Beaver Hill www.beaverhillauctions.com	0-54: wool	2.30 - 2.62	70-85: wool	2.45 - 2.62	86-105:wool	2.24 - 2.55	Ewes: wool	1.35 - 1.85	1376
		0-54: hair	1.80 - 2.50			86-105:hair	2.11 - 2.55	Ewes: hair	1.60 - 2.27	
		55-69: wool	2.50 - 2.66	70-85: hair	2.35 - 2.65	106+:wool	2.25 - 2.46	Rams: wool	1.55 - 1.81	
		55-69: hair	2.55 - 2.78			106+:hair	2.17 - 2.35	Rams: hair	1.70 - 2.45	
								Bred Ewes	2 - 3	
						Ewe&Lamb(s)	- - -			
No sale this week	VJV Westlock www.vjvauction.com	0-69: wool	- - -	70-85: wool	- - -	86-105: wool	- - -	Ewes: wool	- - -	-
						86-105: hair	- - -	Ewes: hair	- - -	
		0-69: hair	- - -	70-85: hair	- - -	106+: wool	- - -	Rams: wool	- - -	
						106+: hair	- - -	Rams: hair	- - -	
								Bred Ewes:wool	- - -	
								Ewe&Lamb:hair	- - -	
29-Sep-20	Olds Auction www.oldsauction.com	30-50	2.17 - 2.30	70-80	2.12 - 2.30	90-100	1.90 - 2.11	Ewes	1.10 - 1.18	385 (incl.goats)
		50-60	2.36 - 2.26	80-90	2.15 - 2.31	100-110	2.21 - 2.32	Rams	1.23 - 1.68	
		60-70	2.04 - 2.42			110+	1.49 - 2.13	Bred Ewes	- - -	
26-Sep-20	Picture Butte www.picturebutteauction.ca					Feeder	2.22 - 2.58	Slaughter Ewes	1.18 - 1.30	-
						Slaughter	2.24 - 2.44	Feeder Ewes	1.18 - 1.36	
								Ewe&lamb(s)	- - -	
								Bred ewes	- - -	
								Rams	- - -	
Ontario Live Animal Markets										
nation unava	OSI www.ontariosheep.org	0-50	0.00 - 0.00	65-80	0.00 - 0.00	95-110	0.00 - 0.00	Sheep	0.00 - 0.00	0
		50-64	0.00 - 0.00	80-95	0.00 - 0.00	110+	0.00 - 0.00			
29-Sep-20	OLEX www.ontariosheep.org	0-50	2.70 - 3.18	65-79	2.65 - 2.95	95-109	2.78 - 2.89	Sheep	0.00 - 0.00	2263
		50-64	2.78 - 3.10	80-94	2.68 - 2.90	110+	1.55 - 1.88			
28-Sep-20	Embrun www.ontariosheep.org	0-50	2.45 - 2.97	65-79	2.67 - 2.97	95-109	2.62 - 2.80	Sheep	1.54 - 1.76	433
		50-64	2.70 - 2.90	80-94	2.62 - 2.84	110+	2.20 - 2.76			
24-Sep-20	Brussels www.ontariosheep.org	0-50	2.75 - 2.89	65-79	2.84 - 2.99	95-109	2.68 - 2.78	Sheep	1.65 - 1.95	300
		50-64	2.50 - 3.37	80-94	2.75 - 2.83	110+	2.40 - 2.72			
Alberta Lamb Producers does not endorse individual markets or verify prices provided.										

Trends* in auction price for heavy lambs in Alberta



*Due to differences among auctions, prices are reported as 'trends' rather than averages.
This graph is updated on weeks with two or more markets reporting prices.