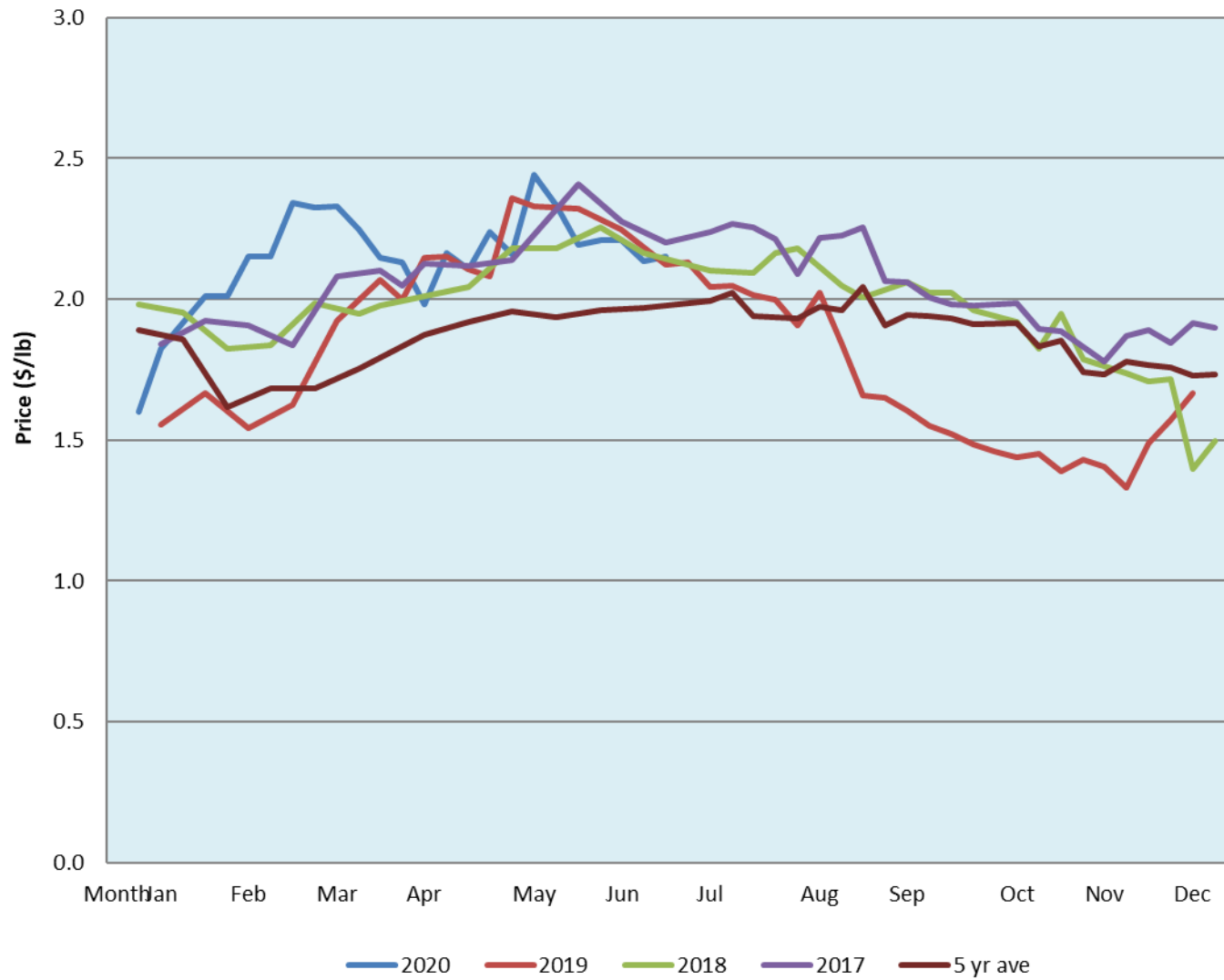


Alberta Live Animal Markets: Visit individual market websites for more information about applicable auction fees and upcoming sales										
Date	Sale	Lambs (\$/lb)		Lambs (\$/lb)		Lambs (\$/lb)		Sheep(\$/lb): Bred ewes \$/hd		Head
		Weight (lbs)	low - high	Weight (lbs)	low - high	Weight (lbs)	low - high		low - high	
29-Jun-20	Beaver Hill www.beaverhillauctions.com	0-54: wool	2.20 - 2.60	70-85: wool	2.40 - 2.80	86-105:wool	2.20 - 2.55	Ewes: wool	1.20 - 2.10	634
		0-54: hair	1.90 - 2.40			86-105:hair	2.10 - 2.45	Ewes: hair	1.20 - 1.68	
		55-69: wool	2.28 - 2.60	70-85: hair	2.20 - 2.60	106+:wool	2.00 - 2.17	Rams: wool	1.35 - 1.98	
		55-69: hair	2.10 - 2.40			106+:hair	1.90 - 2.10	Rams: hair	1.39 - 2.20	
								Bred Ewes	- - -	
						Ewe&Lamb(s)	- - -			
No sale this week	VJV Westlock www.vjvauction.com	0-69: wool	- - -	70-85: wool	- - -	86-105: wool	- - -	Ewes: wool	- - -	-
						86-105: hair	- - -	Ewes: hair	- - -	
		0-69: hair	- - -	70-85: hair	- - -	106+: wool	- - -	Rams: wool	- - -	
						106+: hair	- - -	Rams: hair	- - -	
								Bred Ewes:wool	- - -	
						Ewe&Lamb:hair	- - -			
information unavailable	Olds Auction www.oldsauction.com	30-50	- - -	70-80	- - -	90-100	- - -	Ewes	- - -	-
		50-60	- - -	80-90	- - -	100-110	- - -	Rams	- - -	
		60-70	- - -			110+	- - -	Bred Ewes	- - -	
20-Jun-20	Picture Butte www.picturebutteauction.ca					Feeder	2.40 - 2.56	Slaughter Ewes	1.19 - 1.26	-
						Slaughter	2.19 - 2.24	Feeder Ewes	1.20 - 1.45	
								Ewe&lamb(s)	- - -	
								Bred ewes	- - -	
								Rams	- - -	
Ontario Live Animal Markets										
29-Jun-20	OSI www.ontariosheep.org	0-50	2.48 - 2.90	65-80	2.84 - 3.25	95-110	2.30 - 2.50	Sheep	1.00 - 2.35	1333
		50-64	2.55 - 3.25	80-95	2.50 - 2.75	110+	2.33 - 2.44			
30-Jun-20	OLEX www.ontariosheep.org	0-50	3.13 - 3.50	65-79	2.90 - 3.23	95-109	2.48 - 2.63	Sheep	1.58 - 2.23	2110
		50-64	3.00 - 3.55	80-94	2.45 - 2.88	110+	2.39 - 2.51			
29-Jun-20	Embrun www.ontariosheep.org	0-50	3.20 - 3.25	65-79	2.72 - 3.05	95-109	2.82 - 3.05	Sheep	1.64 - 2.15	430
		50-64	2.75 - 3.00	80-94	2.75 - 2.95	110+	2.55 - 2.82			
25-Jun-20	Brussels www.ontariosheep.org	0-50	3.17 - 3.92	65-79	2.80 - 3.10	95-109	2.46 - 2.63	Sheep	1.47 - 2.48	670
		50-64	2.75 - 3.42	80-94	2.58 - 2.83	110+	2.55 - 2.59			
Alberta Lamb Producers does not endorse individual markets or verify prices provided.										

Trends* in auction price for heavy lambs in Alberta



*Due to differences among auctions, prices are reported as 'trends' rather than averages.
This graph is updated on weeks with two or more markets reporting prices.