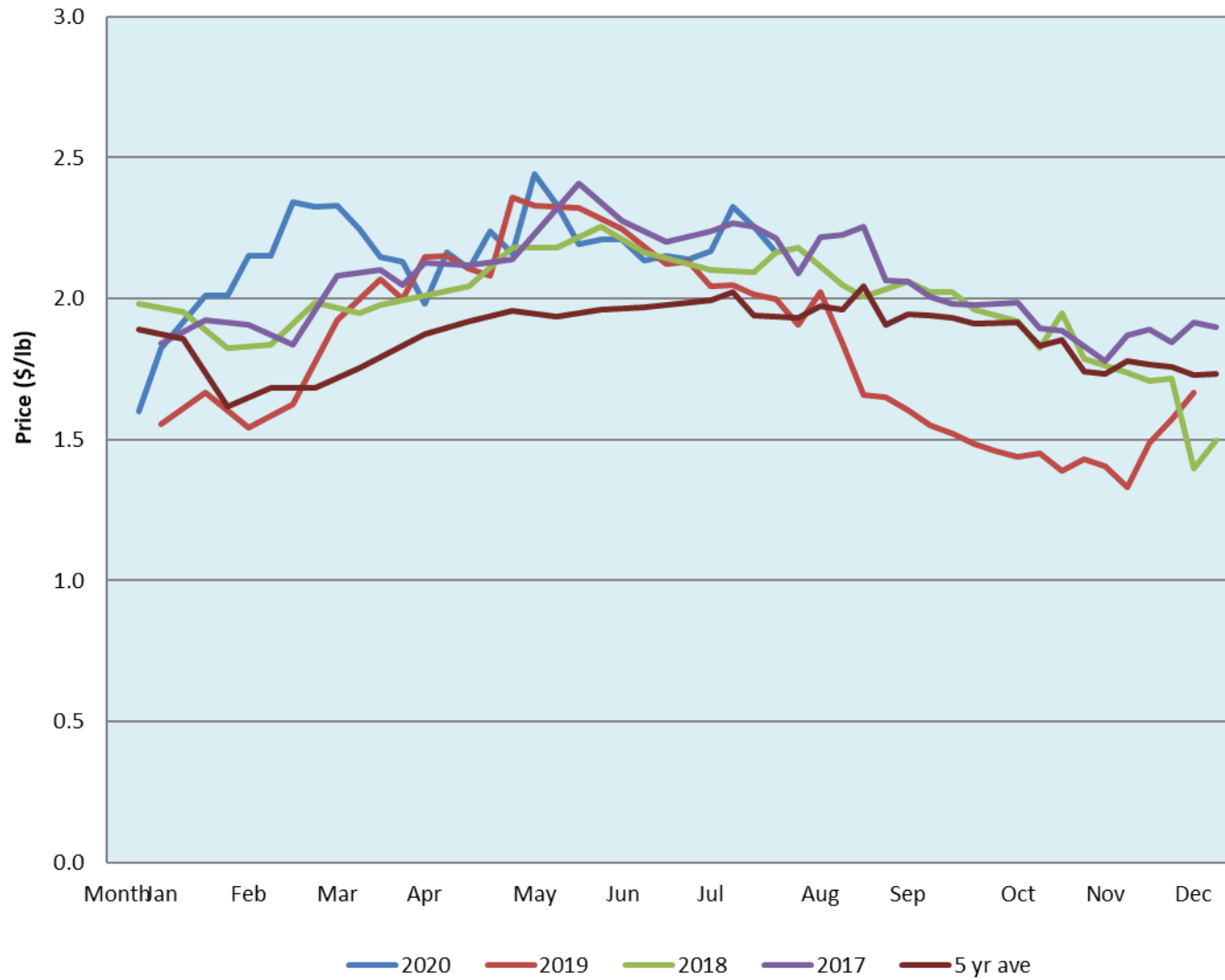


Alberta Live Animal Markets: Visit individual market websites for more information about applicable auction fees and upcoming sales										
Date	Sale	Lambs (\$/lb)		Lambs (\$/lb)		Lambs (\$/lb)		Sheep(\$/lb): Bred ewes \$/hd		Head
		Weight (lbs)	low - high	Weight (lbs)	low - high	Weight (lbs)	low - high		low - high	
No sale this week	Beaver Hill www.beaverhillauctions.com	0-54: wool	- - -	70-85: wool	- - -	86-105:wool	- - -	Ewes: wool	- - -	-
		0-54: hair	- - -			86-105:hair	- - -	Ewes: hair	- - -	
		55-69: wool	- - -	70-85: hair	- - -	106+:wool	- - -	Rams: wool	- - -	
		55-69: hair	- - -			106+:hair	- - -	Rams: hair	- - -	
								Bred Ewes	- - -	
						Ewe&Lamb(s)	- - -			
No sale this week	VJV Westlock www.vjvauction.com	0-69: wool	- - -	70-85: wool	- - -	86-105: wool	- - -	Ewes: wool	- - -	-
						86-105: hair	- - -	Ewes: hair	- - -	
		0-69: hair	- - -	70-85: hair	- - -	106+: wool	- - -	Rams: wool	- - -	
						106+: hair	- - -	Rams: hair	- - -	
								Bred Ewes:wool	- - -	
						Ewe&Lamb:hair	- - -			
4-Aug-20	Olds Auction www.oldsauction.com	30-50	2.00 - 2.25	70-80	2.00 - 2.26	90-100	2.15 - 2.25	Ewes	1.04 - 1.51	30 (incl.goats)
		50-60	2.05 - 2.36	80-90	2.20 - 2.30	100-110	2.05 - 2.14	Rams	1.35 - 1.47	
		60-70	2.07 - 2.31			110+	2.00 - 2.07	Bred Ewes	- - -	
1-Aug-20	Picture Butte www.picturebutteauction.ca					Feeder	2.22 - 2.32	Slaughter Ewes	- - -	-
						Slaughter	2.22 - 2.24	Feeder Ewes	- - -	
								Ewe&lamb(s)	- - -	
								Bred ewes	- - -	
								Rams	- - -	
Ontario Live Animal Markets										
3-Aug-20	OSI www.ontariosheep.org	0-50	2.60 - 2.90	65-80	2.95 - 3.05	95-110	3.00 - 3.00	Sheep	1.20 - 1.88	368
		50-64	2.53 - 3.40	80-95	2.76 - 3.08	110+	2.68 - 2.74			
4-Aug-20	OLEX www.ontariosheep.org	0-50	1.91 - 3.35	65-79	2.40 - 3.13	95-109	2.80 - 2.90	Sheep	1.40 - 1.95	1176
		50-64	2.80 - 3.38	80-94	2.68 - 3.05	110+	1.63 - 2.84			
3-Aug-20	Embrun www.ontariosheep.org	0-50	2.00 - 2.50	65-79	1.95 - 3.22	95-109	2.15 - 2.80	Sheep	1.34 - 1.60	274
		50-64	2.35 - 3.10	80-94	2.65 - 3.20	110+	1.65 - 2.02			
30-Jul-20	Brussels www.ontariosheep.org	0-50	1.95 - 2.60	65-79	2.55 - 2.97	95-109	2.55 - 2.65	Sheep	1.60 - 2.33	535
		50-64	2.30 - 2.54	80-94	2.69 - 2.86	110+	2.50 - 2.62			
Alberta Lamb Producers does not endorse individual markets or verify prices provided.										

Trends* in auction price for heavy lambs in Alberta



*Due to differences among auctions, prices are reported as 'trends' rather than averages.
This graph is updated on weeks with two or more markets reporting prices.