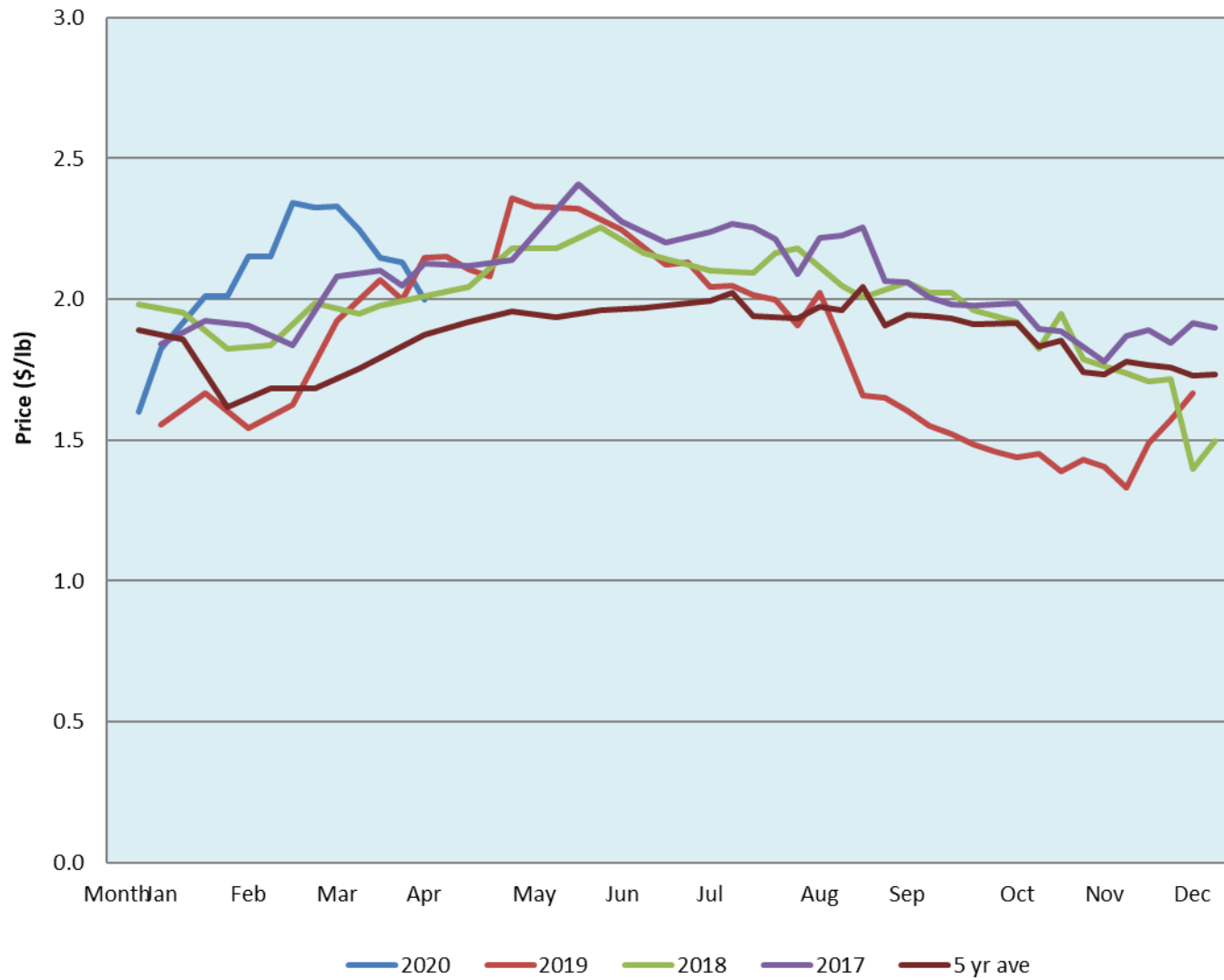


Alberta Live Animal Markets: Visit individual market websites for more information about applicable auction fees and upcoming sales										
Date	Sale	Lambs (\$/lb)		Lambs (\$/lb)		Lambs (\$/lb)		Sheep(\$/lb): Bred ewes \$/hd		Head
		Weight (lbs)	low - high	Weight (lbs)	low - high	Weight (lbs)	low - high		low - high	
6-Apr-20	Beaver Hill www.beaverhillauctions.com	0-54: wool	2.20 - 2.45	70-85: wool	2.30 - 2.79	86-105:wool	1.96 - 2.45	Ewes: wool	0.90 - 1.36	497
		0-54: hair	2.00 - 2.45			86-105:hair	1.90 - 2.40	Ewes: hair	1.00 - 1.35	
		55-69: wool	2.30 - 2.76	70-85: hair	2.35 - 2.65	106+:wool	1.90 - 2.05	Rams: wool	0.94 - 1.18	
		55-69: hair	2.30 - 2.80			106+:hair	1.75 - 2.00	Rams: hair	1.00 - 1.20	
								Bred Ewes	3 - 3	
						Ewe&Lamb(s)	3 - 3			
No sale this week	VJV Westlock www.vjvauction.com	0-69: wool	- - -	70-85: wool	- - -	86-105: wool	- - -	Ewes: wool	- - -	-
						86-105: hair	- - -	Ewes: hair	- - -	
		0-69: hair	- - -	70-85: hair	- - -	106+: wool	- - -	Rams: wool	- - -	
						106+: hair	- - -	Rams: hair	- - -	
								Bred Ewes:wool	- - -	
								Ewe&Lamb:hair	- - -	
7-Apr-20	Olds Auction www.oldsauction.com	30-50	2.00 - 2.25	70-80	2.10 - 2.30	90-100	2.00 - 2.10	Ewes	0.60 - 1.60	193 (incl.goats)
		50-60	2.10 - 2.50	80-90	2.00 - 2.10	100-110	1.90 - 2.00	Rams	0.60 - 1.20	
		60-70	2.00 - 2.40			110+	1.90 - 2.00	Bred Ewes	- - -	
4-Apr-20	Picture Butte www.picturebutteauction.ca					Feeder	- - -	Slaughter Ewes	- - -	-
						Slaughter	1.95 - 2.10	Feeder Ewes	- - -	
								Ewe&lamb(s)	- - -	
								Bred ewes	- - -	
								Rams	- - -	
Ontario Live Animal Markets										
6-Apr-20	OSI www.ontariosheep.org	0-50	0.50 - 3.03	65-80	2.18 - 2.80	95-110	2.18 - 2.48	Sheep	1.24 - 1.23	922
		50-64	2.50 - 3.13	80-95	2.18 - 2.90	110+	1.24 - 2.44			
7-Apr-20	OLEX www.ontariosheep.org	0-50	3.16 - 3.65	65-79	2.50 - 2.98	95-109	2.30 - 2.58	Sheep	1.20 - 1.22	1812
		50-64	2.88 - 3.39	80-94	2.36 - 2.68	110+	2.25 - 2.40			
6-Apr-20	Embrun www.ontariosheep.org	0-50	0.00 - 0.00	65-79	2.50 - 2.72	95-109	2.24 - 2.60	Sheep	0.72 - 1.12	207
		50-64	2.52 - 2.65	80-94	2.40 - 2.57	110+	2.25 - 2.35			
2-Apr-20	Brussels www.ontariosheep.org	0-50	2.22 - 2.25	65-79	2.52 - 2.82	95-109	2.25 - 2.33	Sheep	0.90 - 1.35	642
		50-64	2.99 - 3.32	80-94	2.30 - 2.66	110+	1.99 - 1.99			
Alberta Lamb Producers does not endorse individual markets or verify prices provided.										

Trends* in auction price for heavy lambs in Alberta



*Due to differences among auctions, prices are reported as 'trends' rather than averages.
This graph is updated on weeks with two or more markets reporting prices.