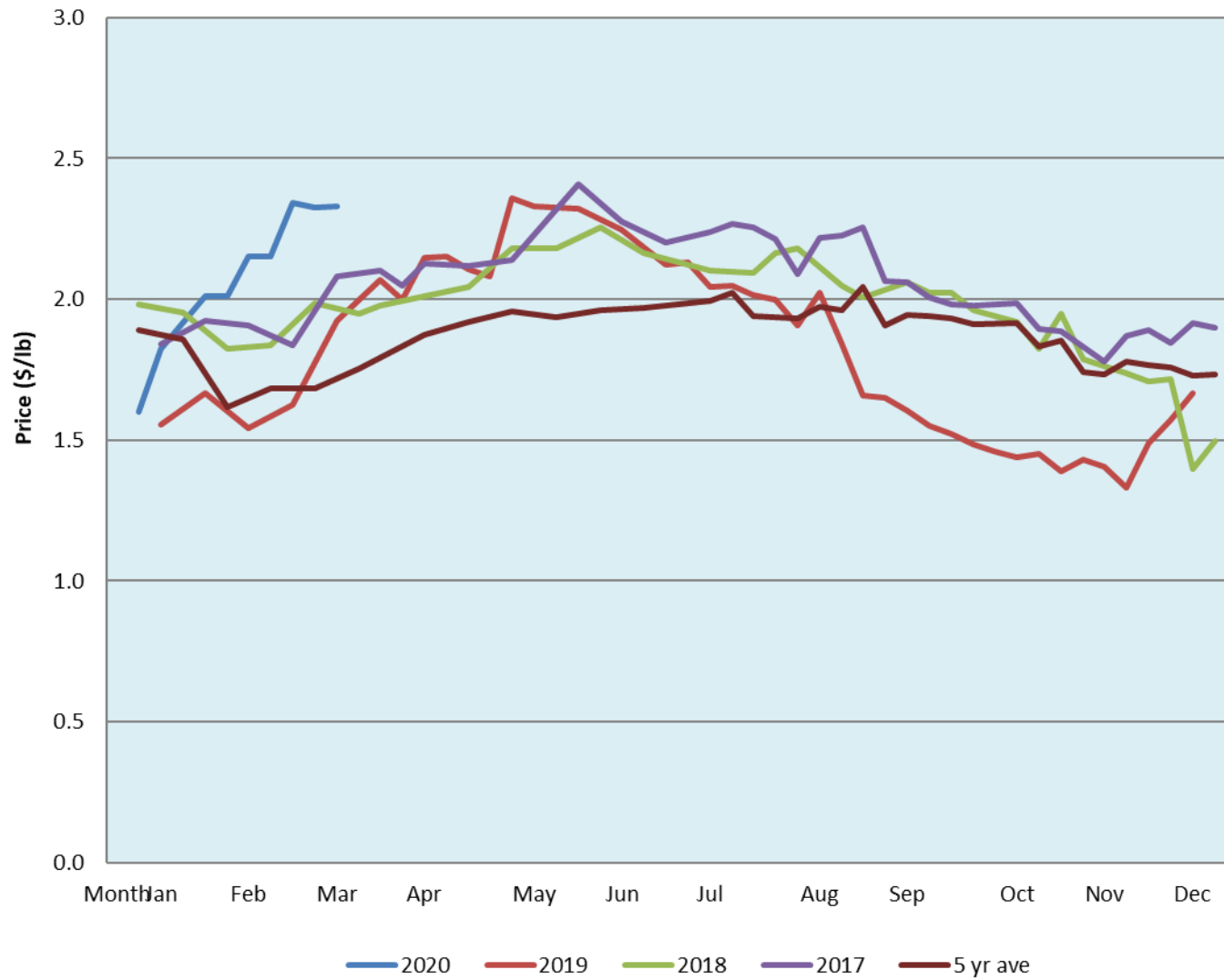


Alberta Live Animal Markets: Visit individual market websites for more information about applicable auction fees and upcoming sales										
Date	Sale	Lambs (\$/lb)		Lambs (\$/lb)		Lambs (\$/lb)		Sheep(\$/lb): Bred ewes \$/hd		Head
		Weight (lbs)	low - high	Weight (lbs)	low - high	Weight (lbs)	low - high		low - high	
9-Mar-20	Beaver Hill www.beaverhillauctions.com	0-54: wool	2.20 - 2.75	70-85: wool	2.70 - 3.07	86-105:wool	2.25 - 2.70	Ewes: wool	1.25 - 1.50	953
		0-54: hair	2.00 - 2.50			86-105:hair	2.15 - 2.58	Ewes: hair	1.24 - 1.53	
		55-69: wool	2.75 - 3.14	70-85: hair	2.65 - 3.07	106+:wool	2.10 - 2.32	Rams: wool	1.20 - 1.50	
		55-69: hair	2.50 - 3.14			106+:hair	2.05 - 2.20	Rams: hair	1.20 - 1.40	
								Bred Ewes	3 - 3	
						Ewe&Lamb(s)	3 - 3			
No sale this week	VJV Westlock www.vjvauction.com	0-69: wool	- - -	70-85: wool	- - -	86-105: wool	- - -	Ewes: wool	- - -	-
						86-105: hair	- - -	Ewes: hair	- - -	
		0-69: hair	- - -	70-85: hair	- - -	106+: wool	- - -	Rams: wool	- - -	
						106+: hair	- - -	Rams: hair	- - -	
								Bred Ewes:wool	- - -	
						Ewe&Lamb:hair	- - -			
10-Mar-20	Olds Auction www.oldsauction.com	30-50	- - -	70-80	2.50 - 2.80	90-100	2.40 - 2.50	Ewes	- - -	155 (incl.goats)
		50-60	2.70 - 2.80	80-90	2.55 - 2.90	100-110	- - -	Rams	2.00 - 2.50	
		60-70	2.50 - 2.80			110+	- - -	Bred Ewes	- - -	
Information unavailable	Picture Butte www.picturebutteauction.ca					Feeder	- - -	Slaughter Ewes	- - -	-
						Slaughter	- - -	Feeder Ewes	- - -	
								Ewe&lamb(s)	- - -	
								Bred ewes	- - -	
								Rams	- - -	
Ontario Live Animal Markets										
9-Mar-20	OSI www.ontariosheep.org	0-50	0.00 - 0.00	65-80	2.90 - 3.65	95-110	2.68 - 2.79	Sheep	1.45 - 1.85	451
		50-64	3.20 - 3.70	80-95	2.80 - 3.10	110+	2.05 - 2.71			
10-Mar-20	OLEX www.ontariosheep.org	0-50	3.65 - 4.90	65-79	3.10 - 3.68	95-109	3.00 - 3.20	Sheep	1.33 - 1.65	1634
		50-64	3.60 - 4.00	80-94	2.98 - 3.35	110+	2.00 - 3.13			
9-Mar-20	Embrun www.ontariosheep.org	0-50	3.75 - 4.15	65-79	3.22 - 3.54	95-109	2.75 - 3.07	Sheep	1.24 - 1.46	235
		50-64	3.45 - 3.60	80-94	3.20 - 3.40	110+	2.74 - 3.02			
5-Feb-20	Brussels www.ontariosheep.org	0-50	3.71 - 3.71	65-79	3.15 - 3.35	95-109	2.65 - 2.80	Sheep	1.44 - 1.95	256
		50-64	3.47 - 3.61	80-94	2.73 - 2.96	110+	2.30 - 2.30			
Alberta Lamb Producers does not endorse individual markets or verify prices provided.										

Trends* in auction price for heavy lambs in Alberta



*Due to differences among auctions, prices are reported as 'trends' rather than averages.
 This graph is updated on weeks with two or more markets reporting prices.