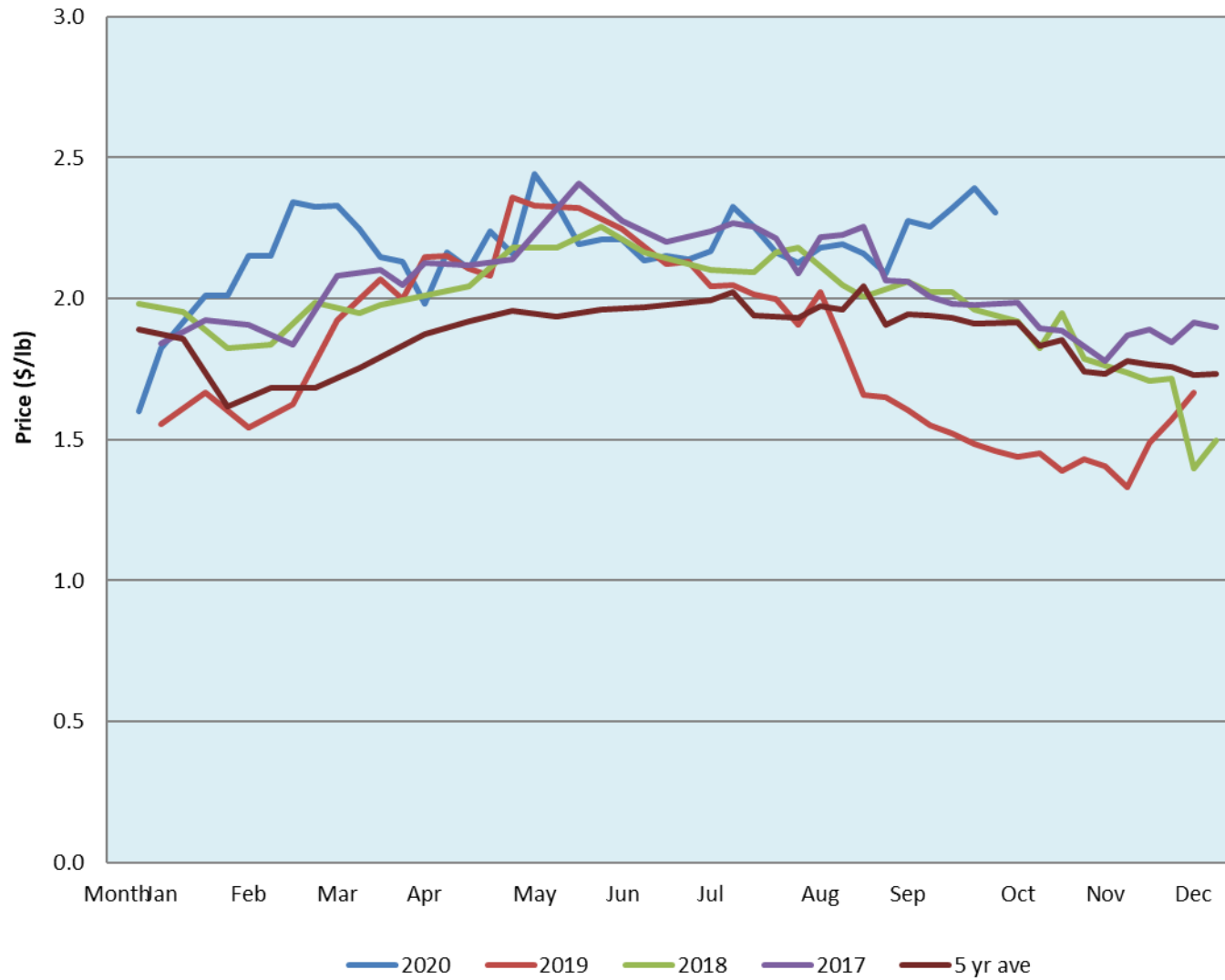


Alberta Live Animal Markets: Visit individual market websites for more information about applicable auction fees and upcoming sales										
Date	Sale	Lambs (\$/lb)		Lambs (\$/lb)		Lambs (\$/lb)		Sheep(\$/lb): Bred ewes \$/hd		Head
		Weight (lbs)	low - high	Weight (lbs)	low - high	Weight (lbs)	low - high		low - high	
No sale this week	Beaver Hill www.beaverhillauctions.com	0-54: wool	- - -	70-85: wool	- - -	86-105:wool	- - -	Ewes: wool	- - -	-
		0-54: hair	- - -			86-105:hair	- - -	Ewes: hair	- - -	
		55-69: wool	- - -	70-85: hair	- - -	106+:wool	- - -	Rams: wool	- - -	
		55-69: hair	- - -			106+:hair	- - -	Rams: hair	- - -	
								Bred Ewes	- - -	
						Ewe&Lamb(s)	- - -			
No sale this week	VJV Westlock www.vjvauction.com	0-69: wool	- - -	70-85: wool	- - -	86-105: wool	- - -	Ewes: wool	- - -	-
						86-105: hair	- - -	Ewes: hair	- - -	
		0-69: hair	- - -	70-85: hair	- - -	106+: wool	- - -	Rams: wool	- - -	
						106+: hair	- - -	Rams: hair	- - -	
								Bred Ewes:wool	- - -	
						Ewe&Lamb:hair	- - -			
13-Oct-20	Olds Auction www.oldsauction.com	30-50	1.90 - 3.04	70-80	1.61 - 2.56	90-100	2.17 - 2.57	Ewes	1.27 - 1.57	197 (incl.goats)
		50-60	1.81 - 3.15	80-90	1.62 - 2.58	100-110	2.08 - 2.37	Rams	1.19 - 1.41	
		60-70	1.59 - 3.10			110+	2.14 - 2.28	Bred Ewes	- - -	
10-Oct-20	Picture Butte www.picturebutteauction.ca					Feeder	2.29 - 2.50	Slaughter Ewes	1.15 - 1.21	-
						Slaughter	2.36 - 2.41	Feeder Ewes	- - -	
								Ewe&lamb(s)	- - -	
								Bred ewes	- - -	
								Rams	- - -	
Ontario Live Animal Markets										
nation unava	OSI www.ontariosheep.org	0-50	0.00 - 0.00	65-80	0.00 - 0.00	95-110	0.00 - 0.00	Sheep	0.00 - 0.00	0
		50-64	0.00 - 0.00	80-95	0.00 - 0.00	110+	0.00 - 0.00			
13-Oct-20	OLEX www.ontariosheep.org	0-50	3.20 - 3.40	65-79	2.80 - 3.13	95-109	2.60 - 2.80	Sheep	0.00 - 0.00	1483
		50-64	3.20 - 3.40	80-94	2.70 - 3.00	110+	1.50 - 2.05			
12-Oct-20	Embrun www.ontariosheep.org	0-50	2.95 - 3.10	65-79	2.90 - 3.12	95-109	2.56 - 2.85	Sheep	1.34 - 1.95	302
		50-64	2.95 - 3.02	80-94	2.75 - 3.00	110+	1.80 - 2.35			
8-Oct-20	Brussels www.ontariosheep.org	0-50	2.00 - 2.70	65-79	2.80 - 3.22	95-109	2.71 - 2.92	Sheep	1.10 - 1.65	267
		50-64	2.62 - 3.35	80-94	2.84 - 3.00	110+	2.51 - 2.55			
Alberta Lamb Producers does not endorse individual markets or verify prices provided.										

Trends* in auction price for heavy lambs in Alberta



*Due to differences among auctions, prices are reported as 'trends' rather than averages.
This graph is updated on weeks with two or more markets reporting prices.