

Alberta Live Animal Markets: Visit individual market websites for more information about applicable auction fees and upcoming sales

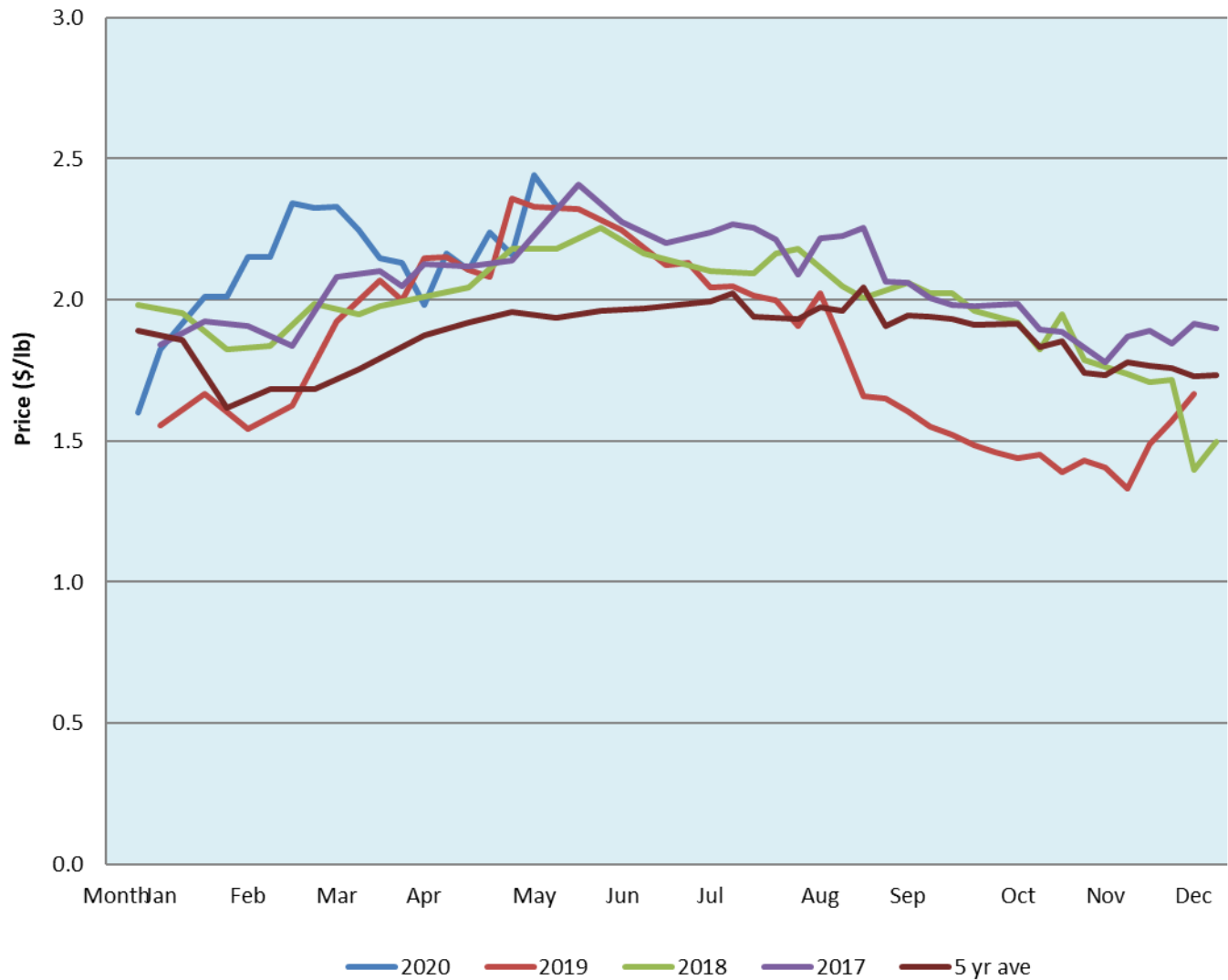
Date	Sale	Lambs (\$/lb)		Lambs (\$/lb)		Lambs (\$/lb)		Sheep(\$/lb): Bred ewes \$/hd		Head
		Weight (lbs)	low - high	Weight (lbs)	low - high	Weight (lbs)	low - high		low - high	
18-May-20	Beaver Hill www.beaverhillauctions.com	0-54: wool	2.40 - 2.78	70-85: wool	2.30 - 2.78	86-105: wool	2.15 - 2.55	Ewes: wool	1.10 - 1.57	1039
		0-54: hair	2.00 - 2.50			86-105: hair	2.10 - 2.40	Ewes: hair	1.05 - 1.54	
		55-69: wool	2.40 - 2.73	70-85: hair	2.25 - 2.50	106+: wool	2.10 - 2.27	Rams: wool	1.10 - 1.26	
		55-69: hair	2.30 - 2.60			Bred Ewes	- - -			
						106+: hair	1.90 - 2.10	Ewe&Lamb(s)	3 - 4	
Sale info unavailable	VJV Westlock www.vjvauction.com	0-69: wool	- - -	70-85: wool	- - -	86-105: wool	- - -	Ewes: wool	- - -	-
						86-105: hair	- - -	Ewes: hair	- - -	
		0-69: hair	- - -	70-85: hair	- - -	106+: wool	- - -	Rams: wool	- - -	
						106+: hair	- - -	Rams: hair	- - -	
								Bred Ewes: wool	- - -	
19-May-20	Olds Auction www.oldsauktion.com	30-50	2.30 - 2.68	70-80	2.35 - 2.55	90-100	2.15 - 2.40	Ewes	1.20 - 1.80	198 (incl.goats)
		50-60	2.46 - 2.75	80-90	2.30 - 2.48	100-110	2.15 - 2.35	Rams	1.77 - 1.95	
		60-70	2.40 - 2.64			110+	2.15 - 2.35	Bred Ewes	- - -	
16-May-20	Picture Butte www.picturebutteauction.ca					Feeder	2.58 - 3.17	Slaughter Ewes	1.05 - 1.24	-
						Slaughter	2.49 - 2.65	Feeder Ewes	- - -	
								Ewe&lamb(s)	- - -	
								Bred ewes	- - -	
								Rams	- - -	

Ontario Live Animal Markets

18-May-20	OSI www.ontariosheep.org	0-50	3.25 - 3.25	65-80	3.20 - 3.40	95-110	2.95 - 3.13	Sheep	1.00 - 2.10	762
		50-64	3.10 - 3.55	80-95	3.05 - 3.33	110+	2.75 - 2.80			
19-May-20	OLEX www.ontariosheep.org	0-50	3.80 - 4.45	65-79	2.70 - 3.33	95-109	2.63 - 2.98	Sheep	1.20 - 1.95	3162
		50-64	2.95 - 3.40	80-94	2.60 - 2.93	110+	2.86 - 2.95			
18-May-20	Embrun www.ontariosheep.org	0-50	2.70 - 3.55	65-79	2.78 - 3.12	95-109	2.48 - 3.00	Sheep	1.08 - 1.62	558
		50-64	2.76 - 3.20	80-94	2.67 - 3.16	110+	2.37 - 2.84			
14-May-20	Brussels www.ontariosheep.org	0-50	2.80 - 2.80	65-79	2.81 - 3.10	95-109	2.59 - 2.89	Sheep	1.20 - 1.81	679
		50-64	2.91 - 3.24	80-94	2.79 - 2.90	110+	1.57 - 1.69			

Alberta Lamb Producers does not endorse individual markets or verify prices provided.

Trends* in auction price for heavy lambs in Alberta



*Due to differences among auctions, prices are reported as 'trends' rather than averages.
This graph is updated on weeks with two or more markets reporting prices.