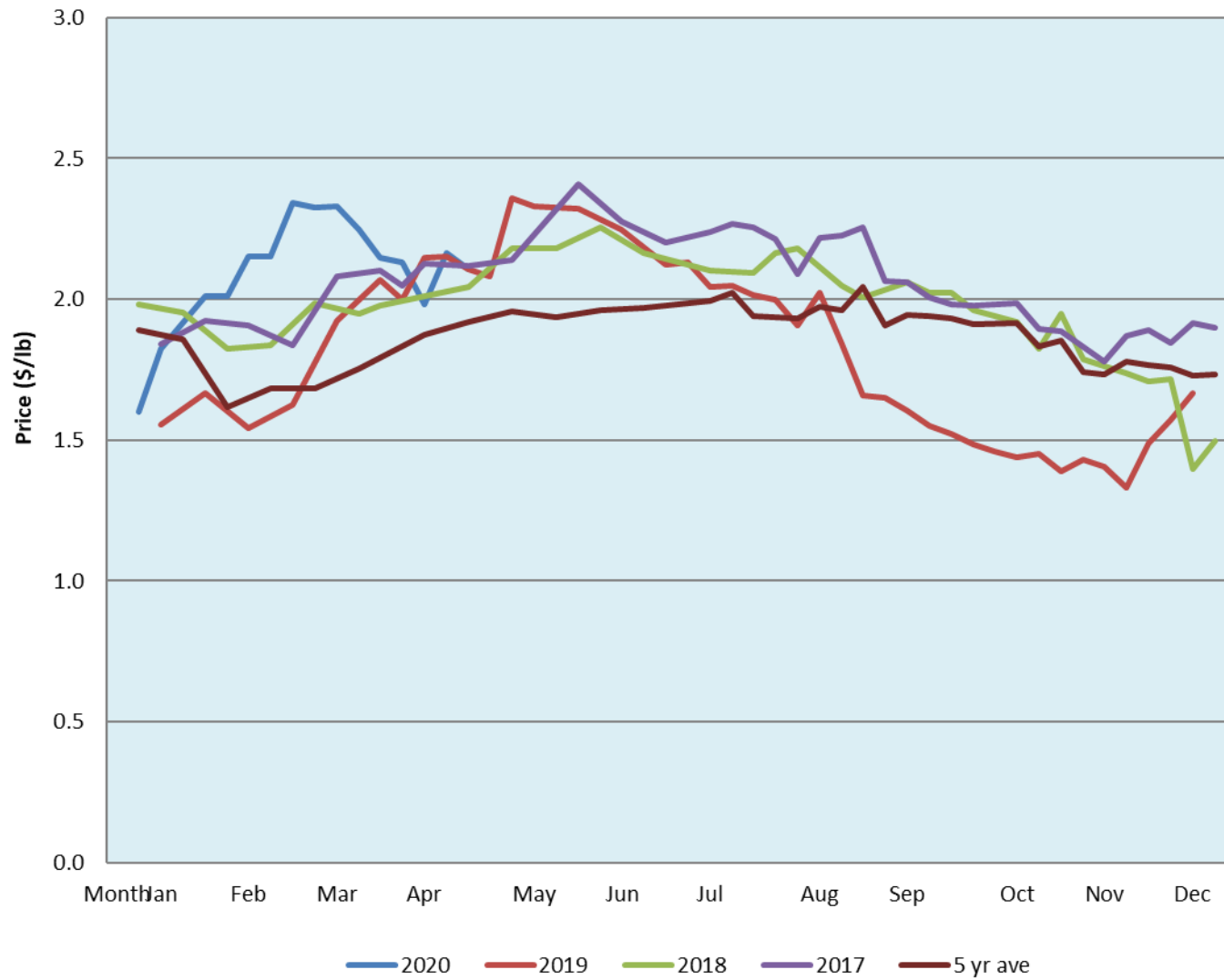


Alberta Live Animal Markets: Visit individual market websites for more information about applicable auction fees and upcoming sales										
Date	Sale	Lambs (\$/lb)		Lambs (\$/lb)		Lambs (\$/lb)		Sheep(\$/lb): Bred ewes \$/hd		Head
		Weight (lbs)	low - high	Weight (lbs)	low - high	Weight (lbs)	low - high		low - high	
20-Apr-20	Beaver Hill www.beaverhillauctions.com	0-54: wool	2.40 - 2.75	70-85: wool	2.40 - 2.90	86-105:wool	2.26 - 2.85	Ewes: wool	1.00 - 2.11	640
		0-54: hair	2.00 - 2.45			86-105:hair	2.10 - 2.60	Ewes: hair	1.12 - 1.46	
		55-69: wool	2.40 - 3.00	70-85: hair	2.35 - 2.65	106+:wool	2.00 - 2.26	Rams: wool	1.00 - 1.85	
		55-69: hair	2.30 - 2.75			106+:hair	1.90 - 2.15	Rams: hair	1.00 - 1.60	
								Bred Ewes	3 - 3	
						Ewe&Lamb(s)	3 - 4			
21-Apr-20	VJV Westlock www.vjvauction.com	0-69: wool	2.54 - 2.70	70-85: wool	2.60 - 2.80	86-105: wool	2.50 - 2.80	Ewes: wool	1.20 - 1.60	176
						86-105: hair	- - -	Ewes: hair	- - -	
		0-69: hair	- - -	70-85: hair	- - -	106+: wool	2.37 - 2.40	Rams: wool	1.50 - 2.20	
						106+: hair	- - -	Rams: hair	- - -	
								Bred Ewes:wool	- - -	
								Ewe&Lamb:hair	- - -	
21-Apr-20	Olds Auction www.oldsauction.com	30-50	2.00 - 2.25	70-80	2.53 - 2.40	90-100	2.00 - 2.10	Ewes	0.88 - 1.34	73 (incl.goats)
		50-60	2.50 - 2.79	80-90	2.40 - 2.10	100-110	1.94 - 2.03	Rams	- - -	
		60-70	2.00 - 2.40			110+	1.49 - 1.56	Bred Ewes	- - -	
18-Apr-20	Picture Butte www.picturebutteauction.ca					Feeder	2.08 - 2.38	Slaughter Ewes	- - -	-
						Slaughter	2.14 - 2.27	Feeder Ewes	- - -	
								Ewe&lamb(s)	- - -	
								Bred ewes	- - -	
								Rams	- - -	
Ontario Live Animal Markets										
20-Apr-20	OSI www.ontariosheep.org	0-50	3.70 - 3.70	65-80	2.25 - 3.83	95-110	2.79 - 2.93	Sheep	1.40 - 1.95	703
		50-64	3.05 - 3.85	80-95	2.70 - 3.55	110+	1.39 - 2.75			
21-Apr-20	OLEX www.ontariosheep.org	0-50	3.60 - 4.67	65-79	3.17 - 3.56	95-109	2.93 - 3.17	Sheep	1.40 - 1.85	2981
		50-64	3.40 - 3.62	80-94	2.60 - 3.19	110+	2.80 - 3.10			
20-Apr-20	Embrun www.ontariosheep.org	0-50	2.40 - 2.40	65-79	3.30 - 3.65	95-109	3.25 - 3.50	Sheep	0.90 - 1.65	457
		50-64	3.35 - 3.60	80-94	3.22 - 3.52	110+	2.85 - 3.32			
16-Apr-20	Brussels www.ontariosheep.org	0-50	3.41 - 3.58	65-79	3.08 - 3.49	95-109	2.84 - 2.95	Sheep	1.38 - 1.73	940
		50-64	3.34 - 3.65	80-94	2.83 - 2.98	110+	1.86 - 2.68			
Alberta Lamb Producers does not endorse individual markets or verify prices provided.										

Trends* in auction price for heavy lambs in Alberta



*Due to differences among auctions, prices are reported as 'trends' rather than averages.
This graph is updated on weeks with two or more markets reporting prices.