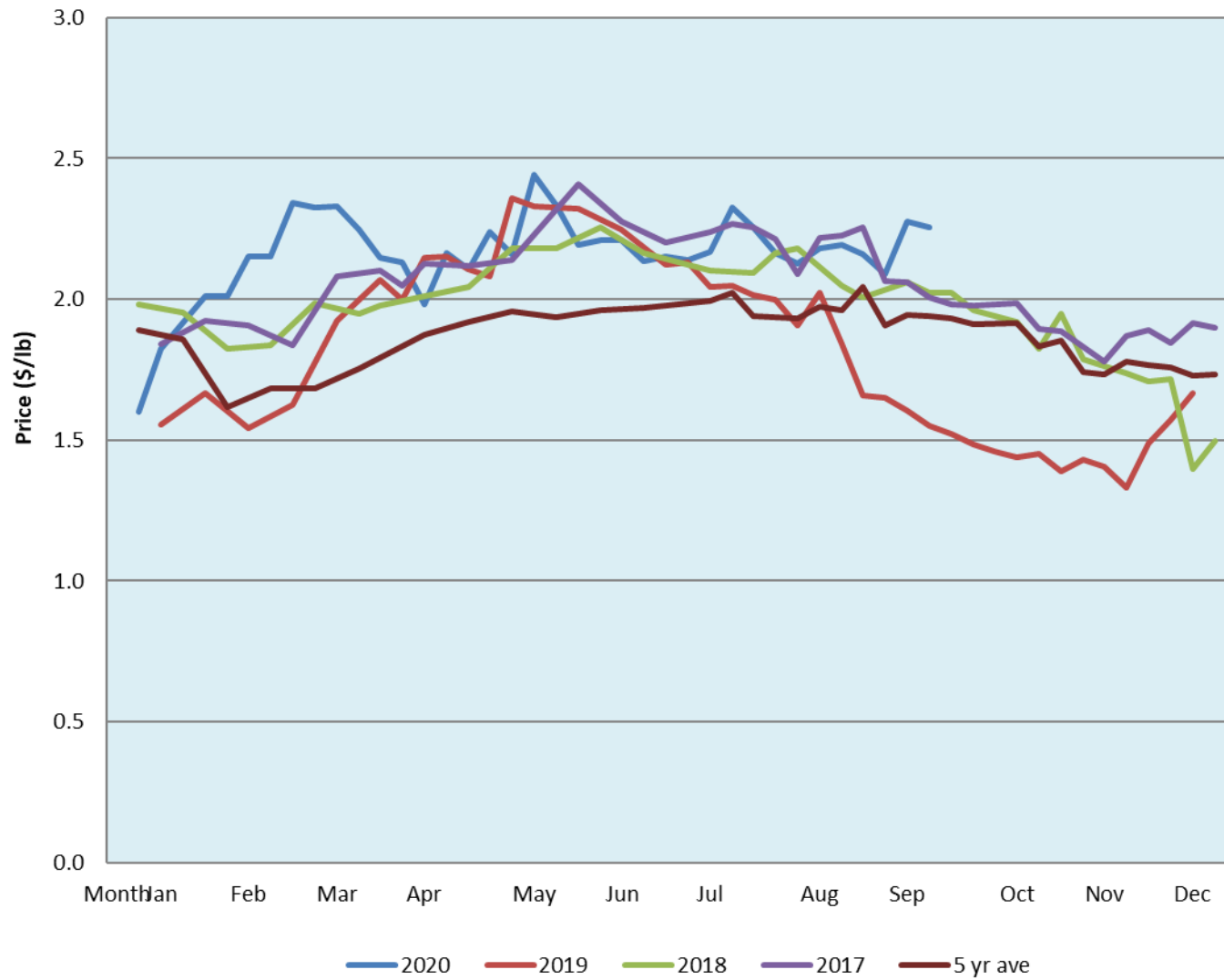


Alberta Live Animal Markets: Visit individual market websites for more information about applicable auction fees and upcoming sales										
Date	Sale	Lambs (\$/lb)		Lambs (\$/lb)		Lambs (\$/lb)		Sheep(\$/lb): Bred ewes \$/hd		Head
		Weight (lbs)	low - high	Weight (lbs)	low - high	Weight (lbs)	low - high		low - high	
21-Sep-20	Beaver Hill www.beaverhillauctions.com	0-54: wool	2.10 - 2.58	70-85: wool	2.20 - 2.55	86-105:wool	2.17 - 2.49	Ewes: wool	1.45 - 1.92	1389
		0-54: hair	1.60 - 2.15			86-105:hair	2.20 - 2.45	Ewes: hair	1.40 - 2.10	
		55-69: wool	2.30 - 2.58	70-85: hair	2.10 - 2.56	106+:wool	2.25 - 2.46	Rams: wool	1.58 - 2.12	
		55-69: hair	2.10 - 2.46			106+:hair	2.17 - 2.30	Rams: hair	1.50 - 1.71	
								Bred Ewes	2 - 3	
						Ewe&Lamb(s)	- - -			
No sale this week	VJV Westlock www.vjvauction.com	0-69: wool	- - -	70-85: wool	- - -	86-105: wool	- - -	Ewes: wool	- - -	-
						86-105: hair	- - -	Ewes: hair	- - -	
		0-69: hair	- - -	70-85: hair	- - -	106+: wool	- - -	Rams: wool	- - -	
						106+: hair	- - -	Rams: hair	- - -	
								Bred Ewes:wool	- - -	
						Ewe&Lamb:hair	- - -			
22-Sep-20	Olds Auction www.oldsauction.com	30-50	2.35 - 2.47	70-80	2.18 - 2.36	90-100	2.22 - 2.31	Ewes	1.38 - 1.80	234 (incl.goats)
		50-60	1.91 - 2.44	80-90	2.19 - 2.35	100-110	2.10 - 2.21	Rams	1.15 - 1.68	
		60-70	2.10 - 2.42			110+	2.08 - 2.19	Bred Ewes	- - -	
Information unavailable	Picture Butte www.picturebutteauction.ca					Feeder	- - -	Slaughter Ewes	- - -	-
						Slaughter	- - -	Feeder Ewes	- - -	
								Ewe&lamb(s)	- - -	
								Bred ewes	- - -	
								Rams	- - -	
Ontario Live Animal Markets										
Information unavailable	OSI www.ontariosheep.org	0-50	0.00 - 0.00	65-80	0.00 - 0.00	95-110	0.00 - 0.00	Sheep	0.00 - 0.00	0
		50-64	0.00 - 0.00	80-95	0.00 - 0.00	110+	0.00 - 0.00			
22-Sep-20	OLEX www.ontariosheep.org	0-50	2.83 - 3.23	65-79	2.63 - 3.00	95-109	2.78 - 3.04	Sheep	0.00 - 0.00	2682
		50-64	2.72 - 3.25	80-94	2.80 - 3.08	110+	1.65 - 2.03			
21-Sep-20	Embrun www.ontariosheep.org	0-50	2.10 - 3.00	65-79	2.56 - 2.84	95-109	2.47 - 2.64	Sheep	2.10 - 2.22	437
		50-64	2.55 - 2.78	80-94	2.48 - 2.64	110+	2.25 - 2.56			
17-Sep-20	Brussels www.ontariosheep.org	0-50	2.25 - 3.10	65-79	2.52 - 2.92	95-109	2.52 - 2.80	Sheep	2.00 - 2.27	530
		50-64	2.25 - 2.80	80-94	2.53 - 2.74	110+	2.32 - 2.32			
Alberta Lamb Producers does not endorse individual markets or verify prices provided.										

Trends* in auction price for heavy lambs in Alberta



*Due to differences among auctions, prices are reported as 'trends' rather than averages.
This graph is updated on weeks with two or more markets reporting prices.