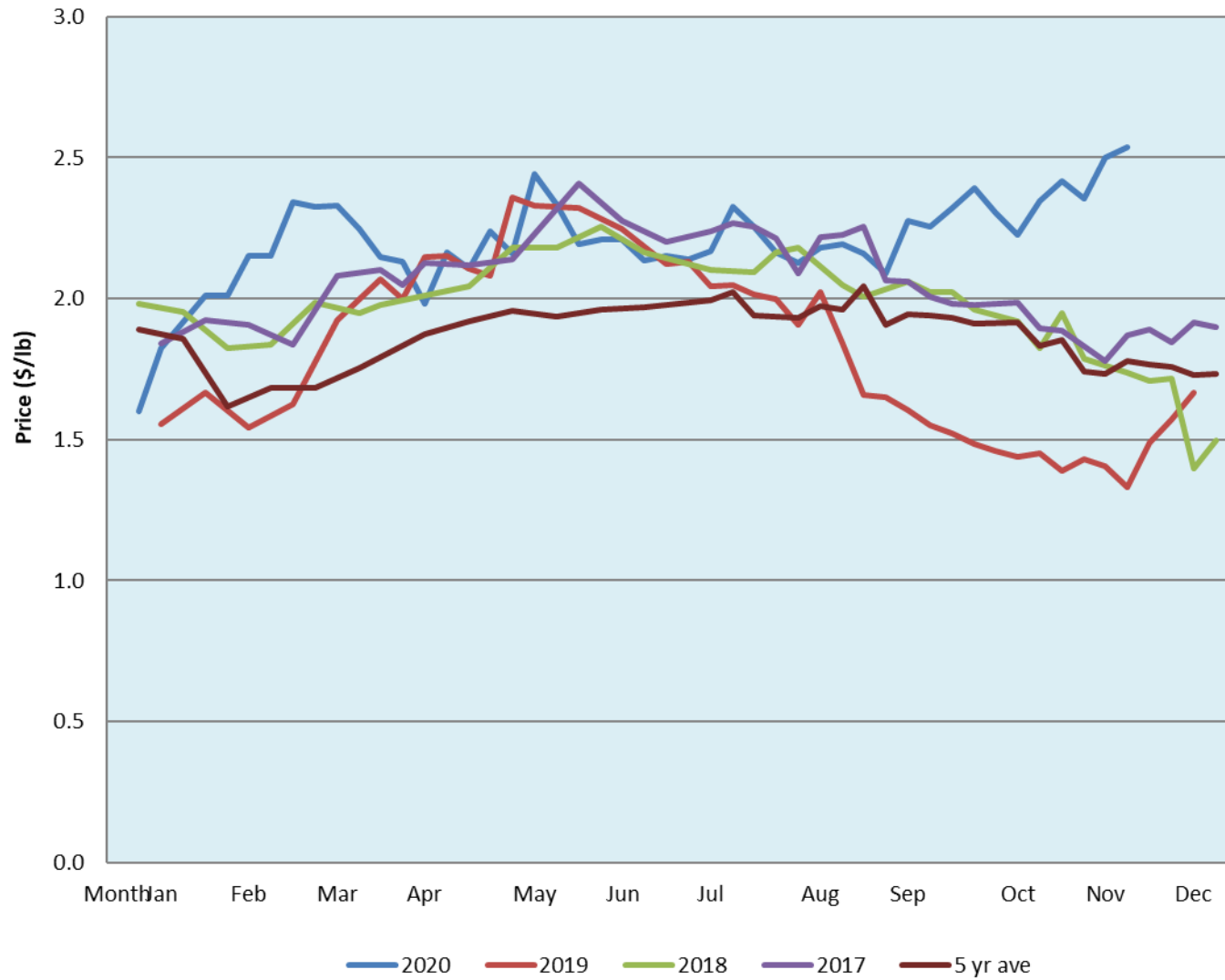


Alberta Live Animal Markets: Visit individual market websites for more information about applicable auction fees and upcoming sales										
Date	Sale	Lambs (\$/lb)		Lambs (\$/lb)		Lambs (\$/lb)		Sheep(\$/lb): Bred ewes \$/hd		Head
		Weight (lbs)	low - high	Weight (lbs)	low - high	Weight (lbs)	low - high		low - high	
23-Nov-20	Beaver Hill <a href="http://www.beaverhillauctions.com">www.beaverhillauctions.com</a>	0-54: wool	2.60 - 3.05	70-85: wool	2.70 - 3.10	86-105:wool	2.56 - 2.96	Ewes: wool	1.35 - 2.55	561
		0-54: hair	2.50 - 2.90			86-105:hair	2.55 - 2.75	Ewes: hair	1.40 - 2.30	
		55-69: wool	2.90 - 3.20	70-85: hair	2.70 - 2.95	106+:wool	2.45 - 2.60	Rams: wool	1.45 - 2.30	
		55-69: hair	2.70 - 3.00			Bred Ewes	2.65 - 3.20			
						106+:hair	2.40 - 2.55	Ewe&Lamb(s)	- - -	
No sale this week	VJV Westlock <a href="http://www.vjvauction.com">www.vjvauction.com</a>	0-69: wool	- - -	70-85: wool	- - -	86-105: wool	- - -	Ewes: wool	- - -	-
						86-105: hair	- - -	Ewes: hair	- - -	
		0-69: hair	- - -	70-85: hair	- - -	106+: wool	- - -	Rams: wool	- - -	
						106+: hair	- - -	Rams: hair	- - -	
								Bred Ewes:wool	- - -	
24-Nov-20	Olds Auction <a href="http://www.oldsauction.com">www.oldsauction.com</a>	30-50	1.10 - 1.40	70-80	2.30 - 2.71	90-100	2.30 - 2.74	Ewes	1.10 - 1.81	198 (incl.goats)
		50-60	1.60 - 2.40	80-90	2.30 - 2.70	100-110	2.60 - 2.80	Rams	1.40 - 2.04	
		60-70	2.25 - 2.71			110+	2.60 - 2.80	Bred Ewes	- - -	
21-Nov-20	Picture Butte <a href="http://www.picturebutteauction.ca">www.picturebutteauction.ca</a>					Feeder	2.23 - 2.41	Slaughter Ewes	1.12 - 1.45	-
						Slaughter	2.38 - 2.39	Feeder Ewes	- - -	
								Ewe&lamb(s)	- - -	
								Bred ewes	- - -	
								Rams	- - -	
Ontario Live Animal Markets										
23-Nov-20	OSI <a href="http://www.ontariosheep.org">www.ontariosheep.org</a>	0-50	3.60 - 4.20	65-80	3.40 - 3.70	95-110	2.74 - 2.90	Sheep	1.85 - 2.80	714
		50-64	3.35 - 3.65	80-95	2.95 - 3.25	110+	2.45 - 2.80			
24-Nov-20	OLEX <a href="http://www.ontariosheep.org">www.ontariosheep.org</a>	0-50	3.70 - 4.50	65-79	3.63 - 4.03	95-109	3.08 - 3.30	Sheep	1.95 - 2.90	1669
		50-64	3.69 - 4.40	80-94	2.98 - 3.40	110+	2.60 - 3.18			
23-Nov-20	Embrun <a href="http://www.ontariosheep.org">www.ontariosheep.org</a>	0-50	4.00 - 4.35	65-79	3.28 - 3.56	95-109	3.05 - 3.22	Sheep	1.87 - 2.46	258
		50-64	3.22 - 3.65	80-94	3.30 - 3.62	110+	2.20 - 3.32			
19-Nov-20	Brussels <a href="http://www.ontariosheep.org">www.ontariosheep.org</a>	0-50	0.00 - 0.00	65-79	2.95 - 4.04	95-109	2.70 - 2.87	Sheep	1.79 - 3.30	264
		50-64	3.20 - 3.50	80-94	2.80 - 2.97	110+	2.50 - 2.70			
Alberta Lamb Producers does not endorse individual markets or verify prices provided.										

### Trends\* in auction price for heavy lambs in Alberta



\*Due to differences among auctions, prices are reported as 'trends' rather than averages.  
This graph is updated on weeks with two or more markets reporting prices.