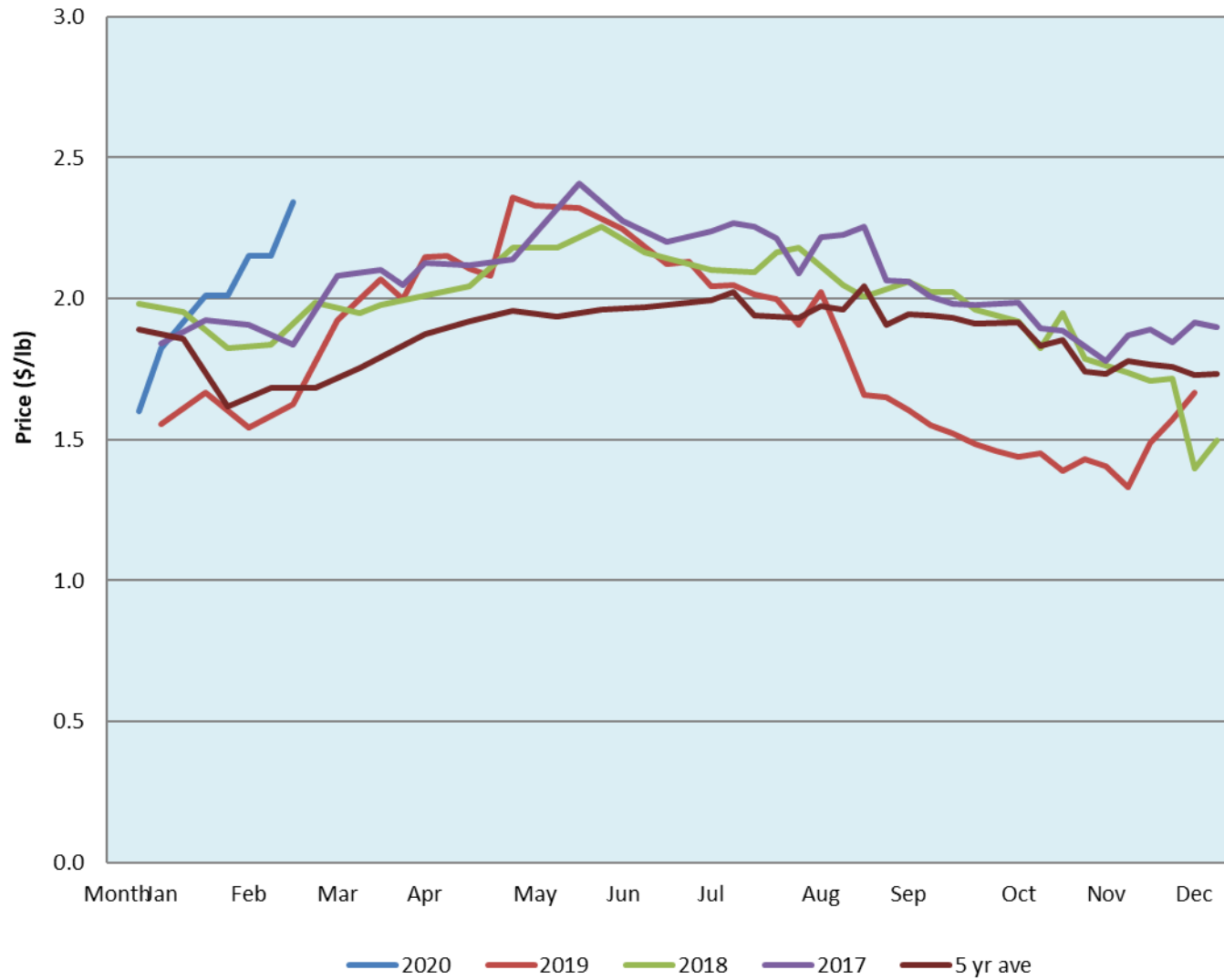


Alberta Live Animal Markets: Visit individual market websites for more information about applicable auction fees and upcoming sales										
Date	Sale	Lambs (\$/lb)		Lambs (\$/lb)		Lambs (\$/lb)		Sheep(\$/lb): Bred ewes \$/hd		Head
		Weight (lbs)	low - high	Weight (lbs)	low - high	Weight (lbs)	low - high		low - high	
24-Feb-20	Beaver Hill www.beaverhillauctions.com	0-54: wool	2.20 - 2.75	70-85: wool	2.50 - 2.88	86-105:wool	2.18 - 2.70	Ewes: wool	1.30 - 1.70	1578
		0-54: hair	2.00 - 2.50			86-105:hair	2.15 - 2.50	Ewes: hair	1.34 - 1.45	
		55-69: wool	2.52 - 2.92	70-85: hair	2.40 - 2.88	106+:wool	2.00 - 2.30	Rams: wool	1.20 - 1.60	
		55-69: hair	2.50 - 2.88			106+:hair	1.95 - 2.15	Rams: hair	1.20 - 1.40	
								Bred Ewes	3 - 3	
						Ewe&Lamb(s)	- - -			
No sale this week	VJV Westlock www.vjvauction.com	0-69: wool	- - -	70-85: wool	- - -	86-105: wool	- - -	Ewes: wool	- - -	-
						86-105: hair	- - -	Ewes: hair	- - -	
		0-69: hair	- - -	70-85: hair	- - -	106+: wool	- - -	Rams: wool	- - -	
						106+: hair	- - -	Rams: hair	- - -	
								Bred Ewes:wool	- - -	
								Ewe&Lamb:hair	- - -	
25-Feb-20	Olds Auction www.oldsauction.com	30-50	- - -	70-80	2.50 - 2.80	90-100	2.40 - 2.50	Ewes	- - -	227 (incl.goats)
		50-60	2.70 - 2.80	80-90	2.55 - 2.90	100-110	- - -	Rams	2.00 - 2.50	
		60-70	2.50 - 2.80			110+	- - -	Bred Ewes	275 - 307	
22-Feb-20	Picture Butte www.picturebutteauction.ca					Feeder	2.34 - 2.57	Slaughter Ewes	- - -	-
						Slaughter	2.28 - 2.57	Feeder Ewes	- - -	
								Ewe&lamb(s)	- - -	
								Bred ewes	- - -	
								Rams	- - -	
Ontario Live Animal Markets										
24-Feb-20	OSI www.ontariosheep.org	0-50	3.42 - 3.56	65-80	3.05 - 3.73	95-110	2.49 - 2.60	Sheep	1.60 - 2.05	567
		50-64	3.25 - 3.55	80-95	1.99 - 2.99	110+	2.15 - 2.53			
25-Feb-20	OLEX www.ontariosheep.org	0-50	3.35 - 4.35	65-79	2.88 - 3.50	95-109	2.40 - 2.69	Sheep	1.65 - 2.05	1923
		50-64	2.95 - 3.48	80-94	2.65 - 2.93	110+	1.58 - 2.13			
24-Feb-20	Embrun www.ontariosheep.org	0-50	3.60 - 3.65	65-79	3.00 - 3.25	95-109	2.62 - 3.10	Sheep	1.60 - 2.05	309
		50-64	3.20 - 3.50	80-94	2.80 - 3.27	110+	2.70 - 2.90			
20-Feb-20	Brussels www.ontariosheep.org	0-50	4.00 - 4.00	65-79	3.30 - 3.66	95-109	2.48 - 2.50	Sheep	1.50 - 2.10	296
		50-64	3.37 - 3.65	80-94	2.52 - 2.82	110+	0.00 - 0.00			
Alberta Lamb Producers does not endorse individual markets or verify prices provided.										

Trends* in auction price for heavy lambs in Alberta



*Due to differences among auctions, prices are reported as 'trends' rather than averages.
 This graph is updated on weeks with two or more markets reporting prices.