

Alberta Live Animal Markets: Visit individual market websites for more information about applicable auction fees and upcoming sales.

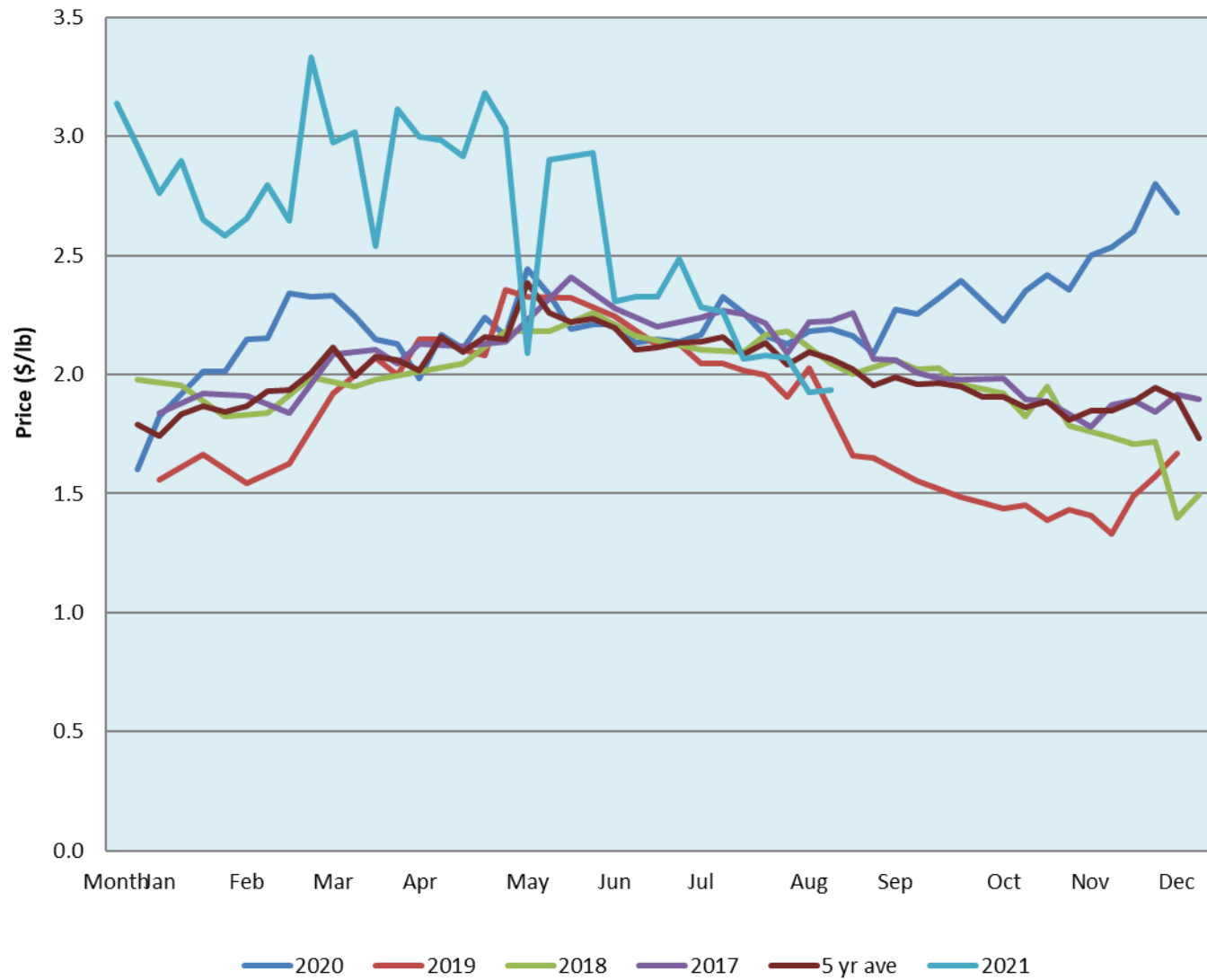
Date	Sale	Lambs (\$/lb)			Lambs (\$/lb)			Lambs (\$/lb)			Sheep(\$/lb): Bred ewes \$/hd		Total Head		
		Weight (lbs)	Head	low - high	Weight (lbs)	Head	low - high	Weight (lbs)	Head	low - high	low - high	low - high			
30-Aug-21	Beaver Hill www.beaverhillauctions.com	0-54: wool	-	1.51 - 2.14	70-85: wool	-	1.70 - 2.07	86-105:wool	-	1.80 - 2.10	Ewes: wool	1.30 - 1.80	1056		
		0-54: hair	-	1.25 - 1.68				86-105:hair			-	1.80 - 1.96		Ewes: hair	1.20 - 1.50
		55-69: wool	-	1.79 - 2.21				106+:wool			-	2 - 2.12		Rams: wool	1.35 - 1.48
		55-69: hair	-	1.50 - 1.75	70-85: hair	-	1.60 - 1.80	106+:hair	-	1.9 - 2.05	Rams: hair	1.00 - 1.40			
			-						-		Bred Ewes	0.00 - 0.00			
								-		Ewe&Lamb(s)	0 - 0				
No sale this week	VJV Westlock www.vjvauction.com	0-69: wool	-	- - -	70-85: wool	-	- - -	86-105: wool	-	- - -	Ewes: wool	- - -	-		
			-					86-105: hair			-	- - -		Ewes: hair	- - -
			-		70-85: hair	-	- - -	106+: wool	-	- - -	Rams: wool	- - -			
		0-69: hair	-	- - -				106+: hair	-	- - -	Rams: hair	- - -			
			-						-		Bred Ewes:wool	- - -			
				-		Ewe&Lamb:hair	- - -								
31-Aug-21	Olds Auction www.oldsauktion.com	30-50	-	1.83 - 1.94	70-80	-	2.07 - 2.21	90-100	-	1.88 - 2.00	Ewes	1.33 - 1.52	284 (incl.goats)		
		50-60	-	1.7 - 1.91	80-90	-	1.81 - 1.94	100-110	-	1.35 - 2.21	Rams	1.40 - 1.70			
		60-70	-	1.0 - 2.02				110+	-	1.6 - 1.91	Bred Ewes	- - -			
28-Aug-21	Picture Butte www.picturebutteauction.ca							Feeder	-	1.75 - 1.89	Slaughter Ewes	0.78 - 1.13	-		
								Slaughter	-	1.9 - 2.07	Feeder Ewes	- - -			
											Ewe&lamb(s)	- - -			
											Bred ewes	- - -			
												Rams		- - -	

Ontario Live Animal Markets

30-Aug-21	OSI www.ontariosheep.org	0-50	42	2.70 - 2.95	65-80	313	2.25 - 2.58	95-110	260	2.17 - 2.25	Sheep	1.65 - 2.15	1991
		50-64	189	2.3 - 2.78	80-95	340	2.13 - 2.29	110+	4	2.16 - 2.18			
31-Aug-21	OLEX www.ontariosheep.org	0-50	27	2.00 - 3.35	65-79	463	3.24 - 2.85	95-109	696	2.20 - 2.33	Sheep	1.05 - 2.00	2440
		50-64	127	2.75 - 3.05	80-94	596	2.23 - 2.40	110+	254	2.13 - 2.31			
30-Aug-21	Embrun www.ontariosheep.org	0-50	72	1.35 - 2.30	65-79	287	2.1 - 2.40	95-109	32	1.95 - 2.35	Sheep	1.45 - 1.74	766
		50-64	175	2.00 - 2.50	80-94	128	2.05 - 2.30	110+	8	1.75 - 1.85			
26-Aug-21	Brussels www.ontariosheep.org	0-50	61	2.55 - 2.67	65-79	155	2.45 - 2.68	95-109	158	2 - 2.14	Sheep	1.70 - 2.15	790
		50-64	287	2.5 - 2.75	80-94	53	2.19 - 2.48	110+	44	2.03 - 2.13			

Alberta Lamb Producers does not endorse individual markets or verify prices provided.

Trends* in auction price for heavy lambs in Alberta



*Due to differences among auctions, prices are reported as 'trends' rather than averages.
 This graph is updated on weeks with two or more markets reporting prices.