

Alberta Live Animal Markets: Visit individual market websites for more information about applicable auction fees and upcoming sales.

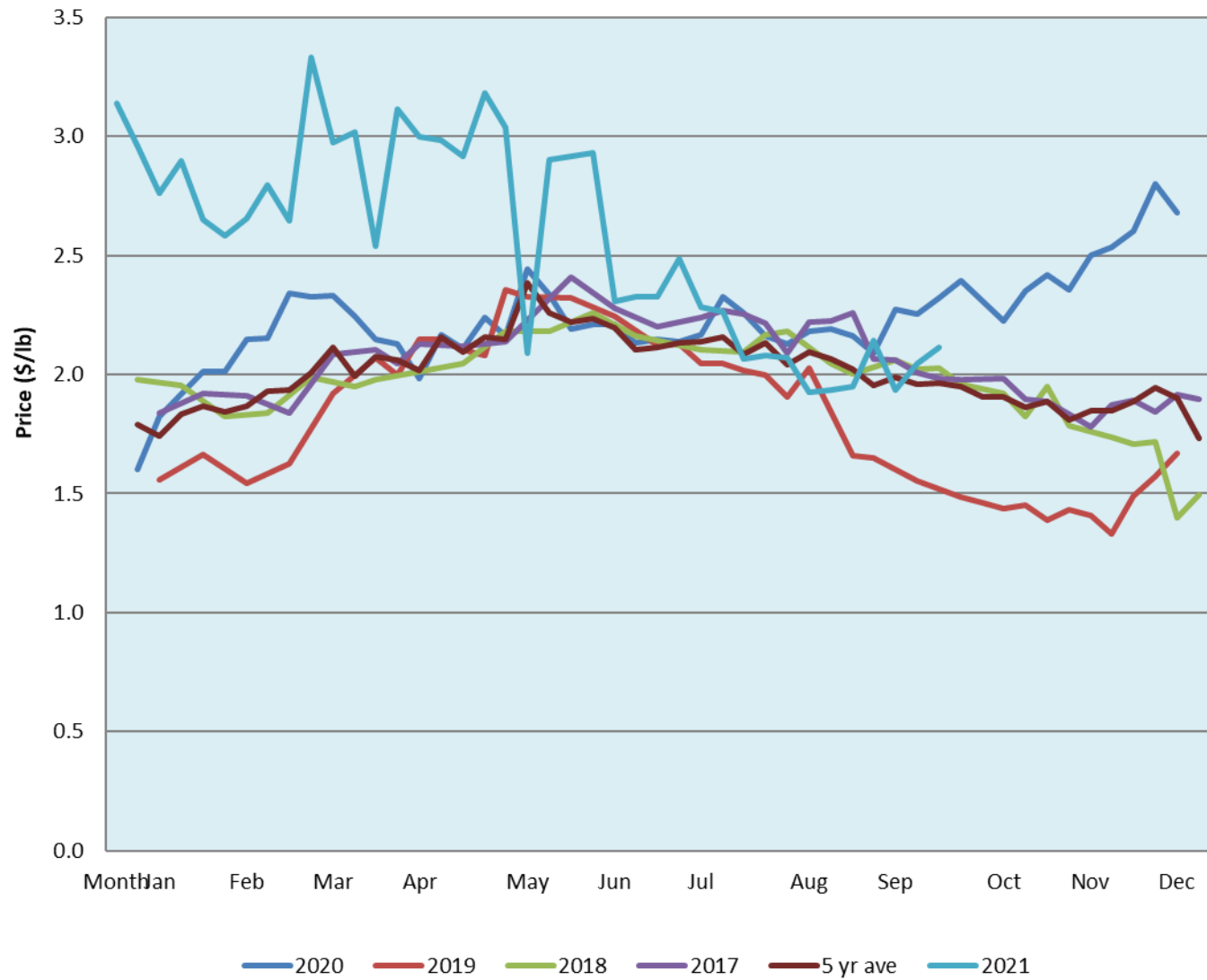
Date	Sale	Lambs (\$/lb)			Lambs (\$/lb)			Lambs (\$/lb)			Sheep(\$/lb): Bred ewes \$/hd		Total Head		
		Weight (lbs)	Head	low - high	Weight (lbs)	Head	low - high	Weight (lbs)	Head	low - high	low - high				
4-Oct-21	Beaver Hill www.beaverhillauctions.com	0-54: wool	-	1.50 - 2.15	70-85: wool	-	1.70 - 2.16	86-105:wool	-	1.80 - 2.15	Ewes: wool	1.20 - 1.70	2063		
		0-54: hair	-	1.00 - 1.50				86-105:hair			-	1.70 - 2.00		Ewes: hair	1.10 - 1.60
		55-69: wool	-	1.80 - 2.25	70-85: hair	-	1.30 - 1.95	106+:wool	-	1.9 - 2.20	Rams: wool	1.51 - 1.85			
		55-69: hair	-	1.20 - 1.76				106+:hair			-	1.8 - 1.95		Rams: hair	1.45 - 1.75
			-								-			Bred Ewes	2.20 - 3.00
								-		Ewe&Lamb(s)	0.00 - 0.00				
Information unavailable	VJV Westlock www.vjvauction.com	0-69: wool	-	- - -	70-85: wool	-	- - -	86-105: wool	-	- - -	Ewes: wool	- - -	-		
			-					86-105: hair			-	- - -		Ewes: hair	- - -
		0-69: hair	-	- - -	70-85: hair	-	- - -	106+: wool	-	- - -	Rams: wool	- - -			
			-					106+: hair			-	- - -		Rams: hair	- - -
			-								-			Bred Ewes:wool	- - -
							-		Ewe&Lamb:hair	- - -					
5-Oct-21	Olds Auction www.oldsauktion.com	30-50	-	1.27 - 1.51	70-80	-	1.75 - 1.89	90-100	-	2.08 - 2.14	Ewes	1.25 - 1.74	507 (incl.goats)		
		50-60	-	1.68 - 1.83	80-90	-	1.86 - 1.97	100-110	-	2.08 - 2.14	Rams	1.54 - 1.68			
		60-70	-	1.49 - 1.91				110+	-	2.11 - 2.26	Bred Ewes	- - -			
2-Oct-21	Picture Butte www.picturebutteauction.ca							Feeder	-	1.7 - 1.90	Slaughter Ewes	0.77 - 1.40	-		
								Slaughter	-	1.96 - 2.11	Feeder Ewes	- - -			
											Ewe&lamb(s)	- - -			
											Bred ewes	- - -			
										Rams	1.25 - 1.40				

Ontario Live Animal Markets

4-Oct-21	OSI www.ontariosheep.org	0-50	79	1.85 - 3.39	65-80	341	2.15 - 2.58	95-110	216	2.06 - 2.20	Sheep	1.65 - 2.30	1312
		50-64	54	2.2 - 2.97	80-95	286	2.08 - 2.36	110+	51	1.91 - 2.10			
5-Oct-21	OLEX www.ontariosheep.org	0-50	93	2.60 - 3.65	65-79	324	2.40 - 3.13	95-109	790	2.00 - 2.30	Sheep	1.38 - 1.95	2390
		50-64	216	2.65 - 3.78	80-94	560	2.10 - 2.50	110+	144	1.80 - 2.28			
4-Oct-21	Embrun www.ontariosheep.org	0-50	1	3.10 - 3.10	65-79	117	2.75 - 3.15	95-109	51	2.1 - 2.65	Sheep	1.50 - 2.10	358
		50-64	28	2.90 - 3.17	80-94	87	2.62 - 3.25	110+	55	1.9 - 2.22			
30-Sep-21	Brussels www.ontariosheep.org	0-50	57	3 - 3.23	65-79	286	2.4 - 2.83	95-109	104	2.1 - 2.25	Sheep	1.75 - 2.05	782
		50-64	139	2.4 - 2.99	80-94	108	2.11 - 2.48	110+	20	2 - 2.15			

Alberta Lamb Producers does not endorse individual markets or verify prices provided.

Trends* in auction price for heavy lambs in Alberta



*Due to differences among auctions, prices are reported as 'trends' rather than averages.
 This graph is updated on weeks with two or more markets reporting prices.