

Alberta Live Animal Markets: Visit individual market websites for more information about applicable auction fees and upcoming sales.

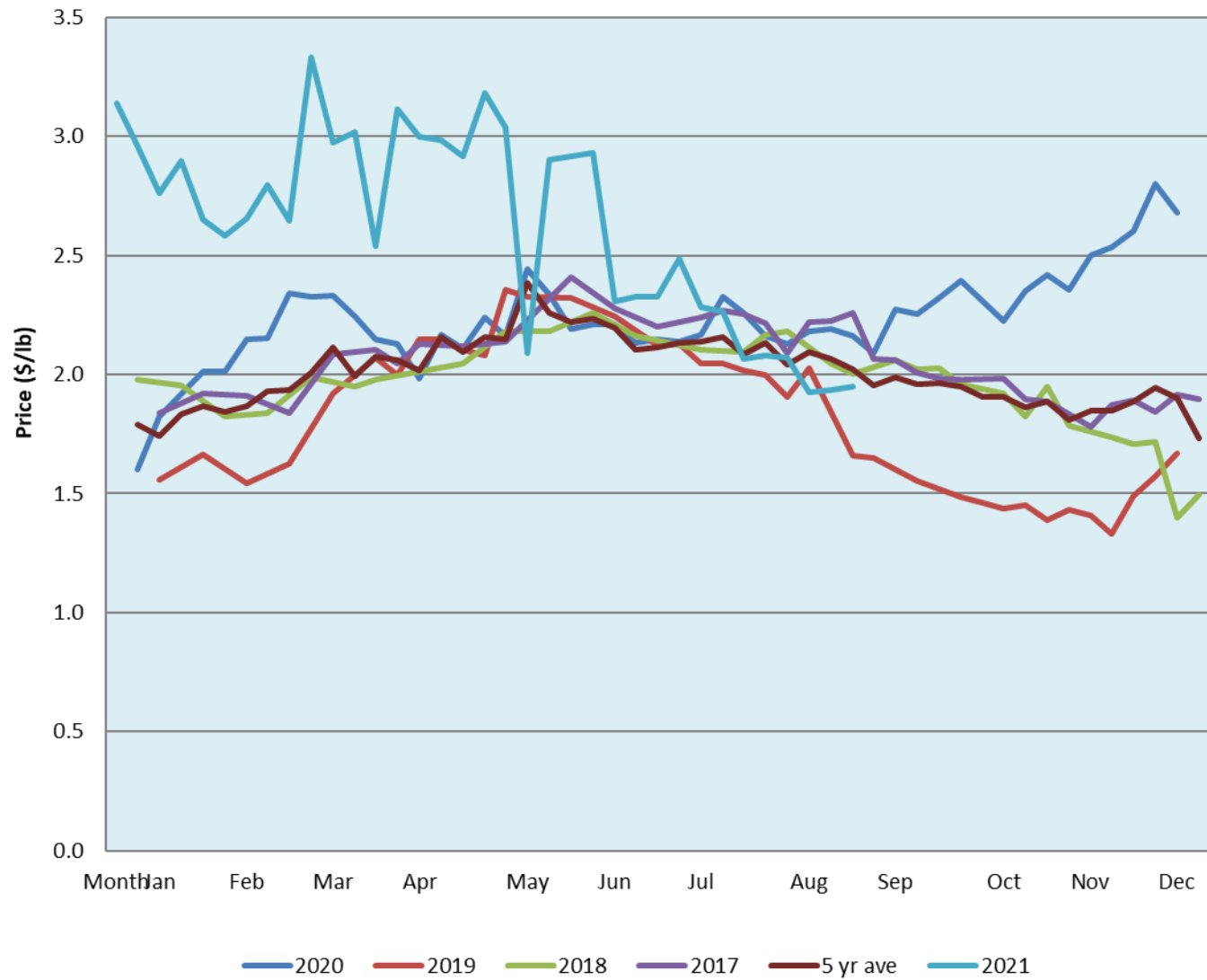
Date	Sale	Lambs (\$/lb)			Lambs (\$/lb)			Lambs (\$/lb)			Sheep(\$/lb): Bred ewes \$/hd		Total Head
		Weight (lbs)	Head	low - high	Weight (lbs)	Head	low - high	Weight (lbs)	Head	low - high	low - high	low - high	
No sale this week	Beaver Hill www.beaverhillauctions.com	0-54: wool	-	0.00 - 0.00	70-85: wool	-	0.00 - 0.00	86-105:wool	-	0.00 - 0.00	Ewes: wool	0.00 - 0.00	0
		0-54: hair	-	0.00 - 0.00		86-105:hair	-	0.00 - 0.00	Rams: wool	0.00 - 0.00			
		55-69: wool	-	0.00 - 0.00	70-85: hair	-	0.00 - 0.00	106+:wool	-	0.00 0.00	Rams: hair	0.00 - 0.00	
		55-69: hair	-	0.00 - 0.00		106+:hair	-	0.00 0.00	Bred Ewes	0.00 - 0.00			
			-				-		Ewe&Lamb(s)	0.00 - 0.00			
7-Aug-21	VJV Westlock www.vjvauction.com	0-69: wool	-	1.9 - 2.60	70-85: wool	-	1.77 - 2.00	86-105: wool	-	1.25 - 2.00	Ewes: wool	- - -	217
			-			-		86-105: hair	-	- - -	Ewes: hair	- - -	
			-			-					Rams: wool	1.47 - 1.47	
		0-69: hair	-	- - -	70-85: hair	-	- - -	106+: wool	-	1.25 - 2.00	Rams: hair	- - -	
			-			-		106+: hair	-	- - -	Bred Ewes:wool	- - -	
7-Sep-21	Olds Auction www.oldsauktion.com	30-50	-	1.68 - 2.07	70-80	-	2 - 2.05	90-100	-	2.41 - 2.66	Ewes	1.57 - 1.71	122 (incl.goats)
		50-60	-	1.63 - 2.01	80-90	-	2.21 - 2.44	100-110	-	2.05 2.10	Rams	1.80 - 2.50	
		60-70	-	2.00 - 2.06				110+	-	2.00 2.10	Bred Ewes	- - -	
4-Sep-21	Picture Butte www.picturebutteauction.ca							Feeder	-	1.8 - 2.05	Slaughter Ewes	0.85 - 1.08	-
								Slaughter	-	1.7 - 2.00	Feeder Ewes	- - -	
											Ewe&lamb(s)	- - -	
											Bred ewes	- - -	
										Rams	1.30 - 1.70		

Ontario Live Animal Markets

6-Sep-21	OSI www.ontariosheep.org	0-50	17	2.85 - 3.05	65-80	117	2.30 - 2.78	95-110	49	2.125 - 2.37	Sheep	1.69 - 2.09	847
		50-64	67	2.15 - 2.95	80-95	100	2.34 - 2.39	110+	0	0 - 0.00			
7-Sep-21	OLEX www.ontariosheep.org	0-50	29	3.23 - 4.00	65-79	384	2.48 - 3.20	95-109	744	2.10 - 2.28	Sheep	1.48 - 2.00	2270
		50-64	276	2.85 - 3.30	80-94	429	2.20 - 2.45	110+	189	1.99 - 2.23			
6-Sep-21	Embrun www.ontariosheep.org	0-50	6	1.35 - 2.90	65-79	70	2.3 - 2.65	95-109	50	2.15 - 2.25	Sheep	0.50 - 1.75	241
		50-64	19	2.35 - 2.65	80-94	85	2.1 - 2.40	110+	2	2 - 2.00			
2-Sep-21	Brussels www.ontariosheep.org	0-50	43	2.48 - 2.60	65-79	199	2.35 - 2.82	95-109	50	2.14 - 2.31	Sheep	1.90 - 2.35	761
		50-64	131	2.5 - 3.20	80-94	177	2.24 - 2.48	110+	60	2.09 - 2.14			

Alberta Lamb Producers does not endorse individual markets or verify prices provided.

Trends* in auction price for heavy lambs in Alberta



*Due to differences among auctions, prices are reported as 'trends' rather than averages.
 This graph is updated on weeks with two or more markets reporting prices.