

Alberta Live Animal Markets: Visit individual market websites for more information about applicable auction fees and upcoming sales.

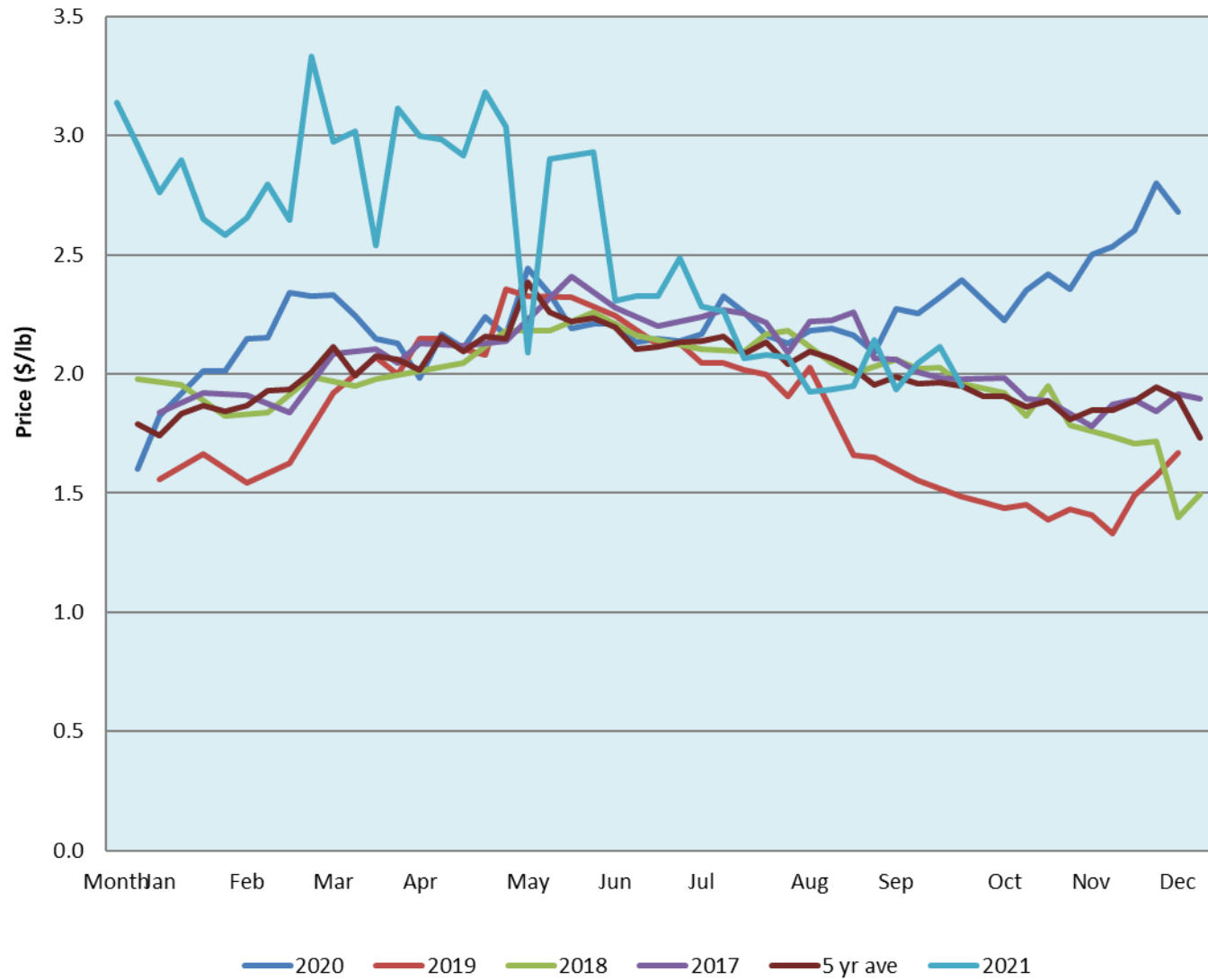
Date	Sale	Lambs (\$/lb)			Lambs (\$/lb)			Lambs (\$/lb)			Sheep(\$/lb): Bred ewes \$/hd		Total Head		
		Weight (lbs)	Head	low - high	Weight (lbs)	Head	low - high	Weight (lbs)	Head	low - high	low - high	low - high			
No sale this week	Beaver Hill www.beaverhillauctions.com	0-54: wool	-	0.00 - 0.00	70-85: wool	-	0.00 - 0.00	86-105:wool	-	0.00 - 0.00	Ewes: wool	0.00 - 0.00	0		
		0-54: hair	-	0.00 - 0.00				86-105:hair			-	0.00 - 0.00		Ewes: hair	0.00 - 0.00
		55-69: wool	-	0.00 - 0.00	70-85: hair	-	0.00 - 0.00	106+:wool	-	1.9 - 0.00	Rams: wool	0.00 - 0.00			
		55-69: hair	-	0.00 - 0.00				106+:hair			-	1.8 - 0.00		Rams: hair	0.00 - 0.00
			-								-			Bred Ewes	0.00 - 0.00
								-		Ewe&Lamb(s)	0.00 - 0.00				
No sale this week	VJV Westlock www.vjvauction.com	0-69: wool	-	- - -	70-85: wool	-	- - -	86-105: wool	-	- - -	Ewes: wool	- - -	-		
			-					86-105: hair	-	- - -	Ewes: hair	- - -			
			-							-		Rams: wool		- - -	
		0-69: hair	-	- - -	70-85: hair	-	- - -	106+: wool	-	- - -	Rams: hair	- - -			
			-							-		Bred Ewes:wool		- - -	
	-						106+: hair	-	- - -	Ewe&Lamb:hair	- - -				
12-Oct-21	Olds Auction www.oldsauktion.com	30-50	-	1.81 - 1.85	70-80	-	1.78 - 1.96	90-100	-	1.77 - 1.91	Ewes	1.50 - 1.70	491 (incl.goats)		
		50-60	-	1.74 - 1.82	80-90	-	1.78 - 2.00	100-110	-	1.71 - 2.00	Rams	1.37 - 2.58			
		60-70	-	1.53 - 1.84				110+	-	1.79 - 2.11	Bred Ewes	- - -			
Information unavailable	Picture Butte www.picturebutteauction.ca							Feeder	-	- - -	Slaughter Ewes	- - -	-		
								Slaughter	-	- - -	Feeder Ewes	- - -			
											Ewe&lamb(s)	- - -			
											Bred ewes	- - -			
										Rams	-				

Ontario Live Animal Markets

11-Oct-21	OSI www.ontariosheep.org	0-50	33	2.00 - 2.85	65-80	322	2.25 - 2.49	95-110	45	2.18 - 2.22	Sheep	1.70 - 2.35	995
		50-64	190	2.3 - 2.85	80-95	109	2.21 - 2.41	110+	15	2.02 - 2.19			
12-Oct-21	OLEX www.ontariosheep.org	0-50	39	2.00 - 3.25	65-79	421	2.20 - 2.83	95-109	727	2.05 - 2.21	Sheep	1.70 - 2.30	2181
		50-64	313	2.80 - 3.08	80-94	464	2.10 - 2.36	110+	35	1.75 - 2.23			
11-Oct-21	Embrun www.ontariosheep.org	0-50	34	2.20 - 3.00	65-79	157	2.56 - 2.72	95-109	25	2.15 - 2.50	Sheep	1.35 - 1.75	474
		50-64	44	2.37 - 3.10	80-94	143	2.35 - 2.62	110+	17	2.04 - 2.25			
7-Oct-21	Brussels www.ontariosheep.org	0-50	35	1.5 - 2.95	65-79	125	2.1 - 2.90	95-109	140	2.06 - 2.13	Sheep	1.66 - 2.00	543
		50-64	76	1.8 - 3.08	80-94	87	2.1 - 2.26	110+	28	1.8 - 2.00			

Alberta Lamb Producers does not endorse individual markets or verify prices provided.

Trends* in auction price for heavy lambs in Alberta



*Due to differences among auctions, prices are reported as 'trends' rather than averages.
 This graph is updated on weeks with two or more markets reporting prices.