

Alberta Live Animal Markets: Visit individual market websites for more information about applicable auction fees and upcoming sales.

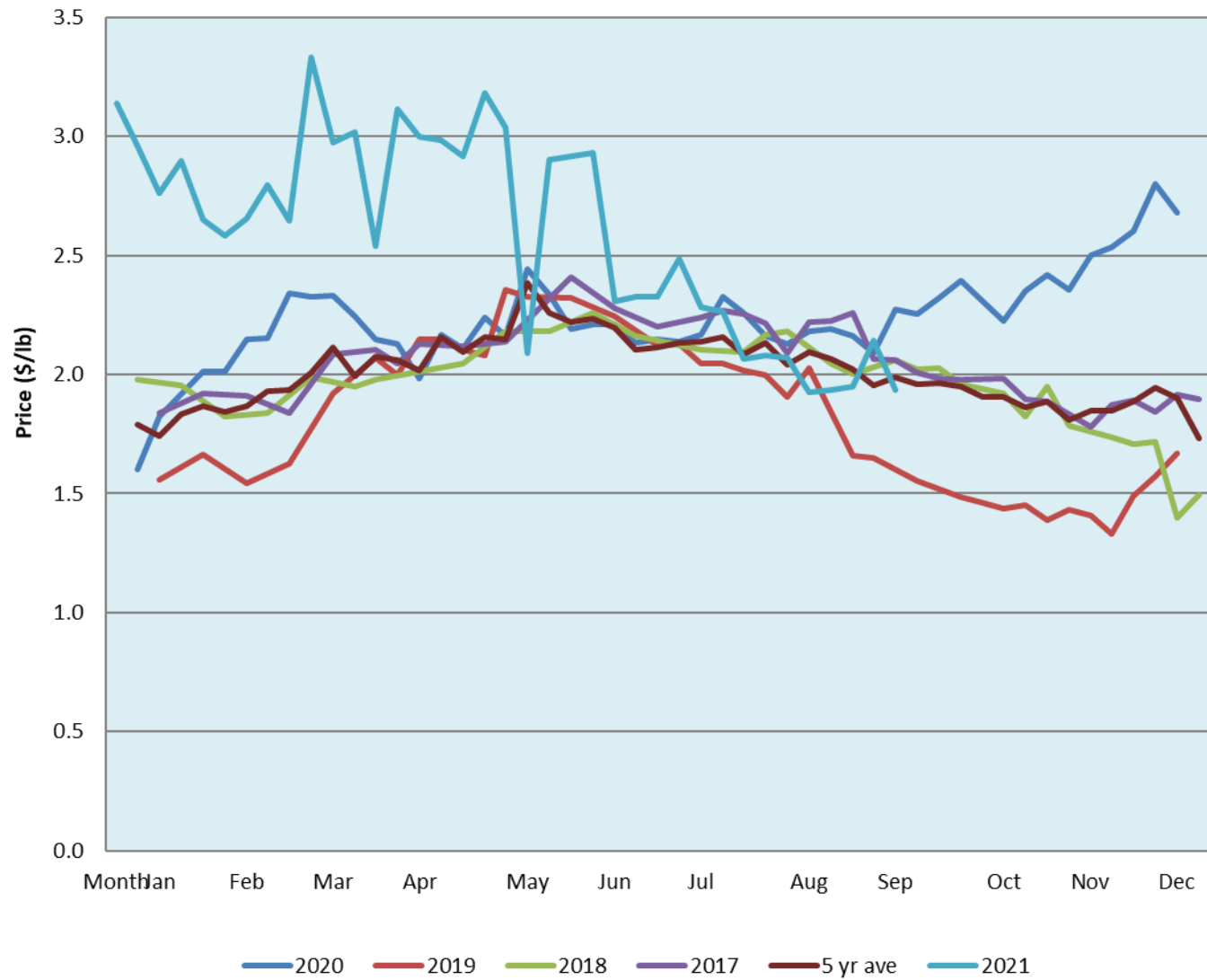
Date	Sale	Lambs (\$/lb)			Lambs (\$/lb)			Lambs (\$/lb)			Sheep(\$/lb): Bred ewes \$/hd		Total Head		
		Weight (lbs)	Head	low - high	Weight (lbs)	Head	low - high	Weight (lbs)	Head	low - high	low - high	low - high			
20-Sep-21	Beaver Hill www.beaverhillauctions.com	0-54: wool	-	2.20 - 2.79	70-85: wool	-	2.03 - 2.72	86-105:wool	-	1.95 - 2.30	Ewes: wool	1.30 - 1.90	1491		
		0-54: hair	-	1.70 - 2.10				86-105:hair			-	1.90 - 2.15		Rams: wool	1.36 - 1.80
		55-69: wool	-	2.15 - 2.78				106+:wool			-	1.90 2.30		Rams: hair	1.48 - 1.80
		55-69: hair	-	2.00 - 2.40	70-85: hair	-	1.90 - 2.40	106+:hair	-	1.80 2.05	Bred Ewes	2.20 - 3.00			
			-								Ewe&Lamb(s)	0.00 - 0.00			
21-Sep-21	VJV Westlock www.vjvauction.com	0-69: wool	-	1.8 - 2.25	70-85: wool	-	1.99 - 2.25	86-105: wool	-	1.99 - 2.25	Ewes: wool	0.80 - 1.50	538		
			-					86-105: hair	-	- - -	Ewes: hair	- - -			
			-								Rams: wool	1.40 - 1.65			
		0-69: hair	-	- - -	70-85: hair	-	- - -	106+: wool	-	1.8 - 2.09	Rams: hair	- - -			
			-					106+: hair	-	- - -	Bred Ewes:wool	- - -			
	-								Ewe&Lamb:hair	- - -					
21-Sep-21	Olds Auction www.oldsauktion.com	30-50	-	2.04 - 2.54	70-80	-	2.02 - 2.32	90-100	-	1.86 - 1.77	Ewes	1.06 - 1.32	381 (incl.goats)		
		50-60	-	2.54 - 3.00	80-90	-	1.43 - 2.22	100-110	-	1.8 - 2.09	Rams	1.73 - 2.50			
		60-70	-	2.24 2.28				110+	-	1.48 - 1.99	Bred Ewes	- - -			
18-Sep-21	Picture Butte www.picturebutteauction.ca							Feeder	-	1.66 - 1.87	Slaughter Ewes	0.88 - 1.23	-		
								Slaughter	-	1.79 - 1.95	Feeder Ewes	- - -			
											Ewe&lamb(s)	- - -			
											Bred ewes	- - -			
											Rams	1.25 - 1.40			

Ontario Live Animal Markets

20-Sep-21	OSI www.ontariosheep.org	0-50	100	2.35 - 3.05	65-80	256	2.50 - 2.90	95-110	210	2 - 2.28	Sheep	1.60 - 2.05	1455
		50-64	114	2.775 - 3.18	80-95	363	2.15 - 2.35	110+	18	2.11 - 2.14			
21-Sep-21	OLEX www.ontariosheep.org	0-50	70	2.75 - 3.73	65-79	539	2.40 - 2.95	95-109	690	2.14 - 2.26	Sheep	1.65 - 2.25	2262
		50-64	293	2.88 - 3.36	80-94	477	2.20 - 2.47	110+	79	2.00 - 2.23			
20-Sep-21	Embrun www.ontariosheep.org	0-50	4	2.65 - 3.37	65-79	81	2.7 - 3.00	95-109	26	1.95 - 2.50	Sheep	1.70 - 1.85	223
		50-64	19	3.00 - 3.05	80-94	80	2.4 - 2.76	110+	3	2.12 - 2.35			
16-Sep-21	Brussels www.ontariosheep.org	0-50	11	2.7 - 3.20	65-79	102	2.41 - 2.96	95-109	85	2.02 - 2.29	Sheep	1.40 - 2.10	675
		50-64	60	2.6 - 3.05	80-94	230	2.1 - 2.41	110+	25	1.975 - 2.20			

Alberta Lamb Producers does not endorse individual markets or verify prices provided.

Trends* in auction price for heavy lambs in Alberta



*Due to differences among auctions, prices are reported as 'trends' rather than averages.
 This graph is updated on weeks with two or more markets reporting prices.