

Alberta Live Animal Markets: Visit individual market websites for more information about applicable auction fees and upcoming sales

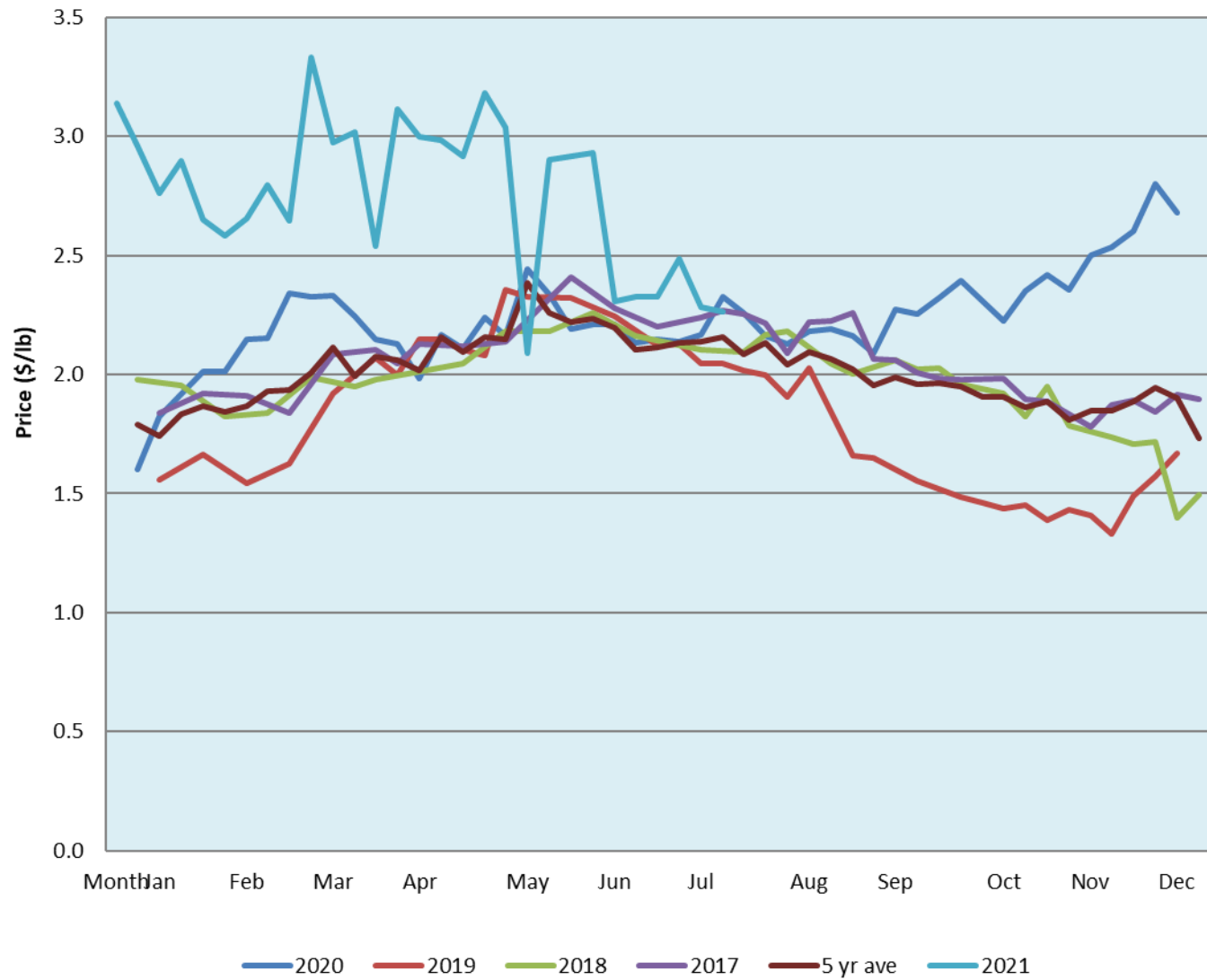
Date	Sale	Lambs (\$/lb)			Lambs (\$/lb)			Lambs (\$/lb)			Sheep(\$/lb): Bred ewes \$/hd		Total Head	
		Weight (lbs)	Head	low - high	Weight (lbs)	Head	low - high	Weight (lbs)	Head	low - high	low - high	low - high		
26-Jul-21	Beaver Hill www.beaverhillauctions.com	0-54: wool	-	1.95 - 2.27	70-85: wool	-	2.00 - 2.28	86-105:wool	-	2.10 - 2.32	Ewes: wool	1.28 - 1.80	1192	
		0-54: hair	-	1.50 - 1.75				86-105:hair	-	1.95 - 2.20	Ewes: hair	1.00 - 1.50		
		55-69: wool	-	1.95 - 2.20	70-85: hair	-	1.80 - 2.00	106+:wool	-	2.15 - 2.32	Rams: wool	1.35 - 2.07		
		55-69: hair	-	1.80 - 2.00				106+:hair	-	1.95 - 2.10	Rams: hair	1.30 - 2.05		
			-						-		Bred Ewes	- - -		
			-						-		Ewe&Lamb(s)	- - -		
No sale this week	VJV Westlock www.vjvauction.com	0-69: wool	-	- - -	70-85: wool	-	- - -	86-105: wool	-	- - -	Ewes: wool	- - -	-	
			-			-		86-105: hair	-	- - -	Ewes: hair	- - -		
			-			-				-		Rams: wool		- - -
		0-69: hair	-	- - -	70-85: hair	-	- - -	106+: wool	-	- - -	Rams: hair	- - -		
			-			-		106+: hair	-	- - -	Bred Ewes:wool	- - -		
			-			-			-	- - -	Ewe&Lamb:hair	- - -		
27-Jul-21	Olds Auction www.oldsauktion.com	30-50	-	1.73 - 1.91	70-80	-	2.08 - 2.41	90-100	-	2.48 - 2.59	Ewes	1.35 - 1.48	336 (incl.goats)	
		50-60	-	2.06 - 2.21	80-90	-	2.51 - 2.61	100-110	-	2.25 - 2.40	Rams	1.59 - 1.68		
		60-70	-	2.17 - 2.34				Feeder	-	2.3 - 2.60	Slaughter Ewes	1.00 - 1.18		
24-Jul-21	Picture Butte www.picturebutteauction.ca							Slaughter	-	2.12 - 2.34	Feeder Ewes	- - -	-	
											Ewe&lamb(s)	- - -		
												Bred ewes		- - -
												Rams		- - -

Ontario Live Animal Markets

26-Jul-21	OSI www.ontariosheep.org	0-50	51	2.25 - 2.80	65-80	231	2.35 - 2.73	95-110	42	2.5 - 2.61	Sheep	1.50 - 1.75	1407
		50-64	112	2.4 - 2.80	80-95	88	2.59 - 2.71	110+	30	2.425 - 2.61			
27-Jul-21	OLEX www.ontariosheep.org	0-50	135	2.35 - 2.68	65-79	339	2.73 - 3.00	95-109	556	2.55 - 2.70	Sheep	1.50 - 2.10	2059
		50-64	301	2.58 - 3.23	80-94	266	2.50 - 2.73	110+	211	2.25 - 2.61			
26-Jul-21	Embrun www.ontariosheep.org	0-50	5	2.00 - 3.40	65-79	112	2.22 - 2.70	95-109	22	2.2 - 2.55	Sheep	1.40 - 1.70	320
		50-64	27	2.25 - 2.90	80-94	90	2.2 - 2.75	110+	16	1.72 - 2.22			
22-Jul-21	Brussels www.ontariosheep.org	0-50	9	2.45 - 2.58	65-79	96	2.575 - 2.82	95-109	39	2.45 - 2.58	Sheep	1.21 - 2.40	299
		50-64	27	2.82 - 2.91	80-94	62	2.51 - 2.58	110+	5	1.5 - 2.55			

Alberta Lamb Producers does not endorse individual markets or verify prices provided.

Trends* in auction price for heavy lambs in Alberta



*Due to differences among auctions, prices are reported as 'trends' rather than averages.
 This graph is updated on weeks with two or more markets reporting prices.