

Alberta Live Animal Markets: Visit individual market websites for more information about applicable auction fees and upcoming sales.

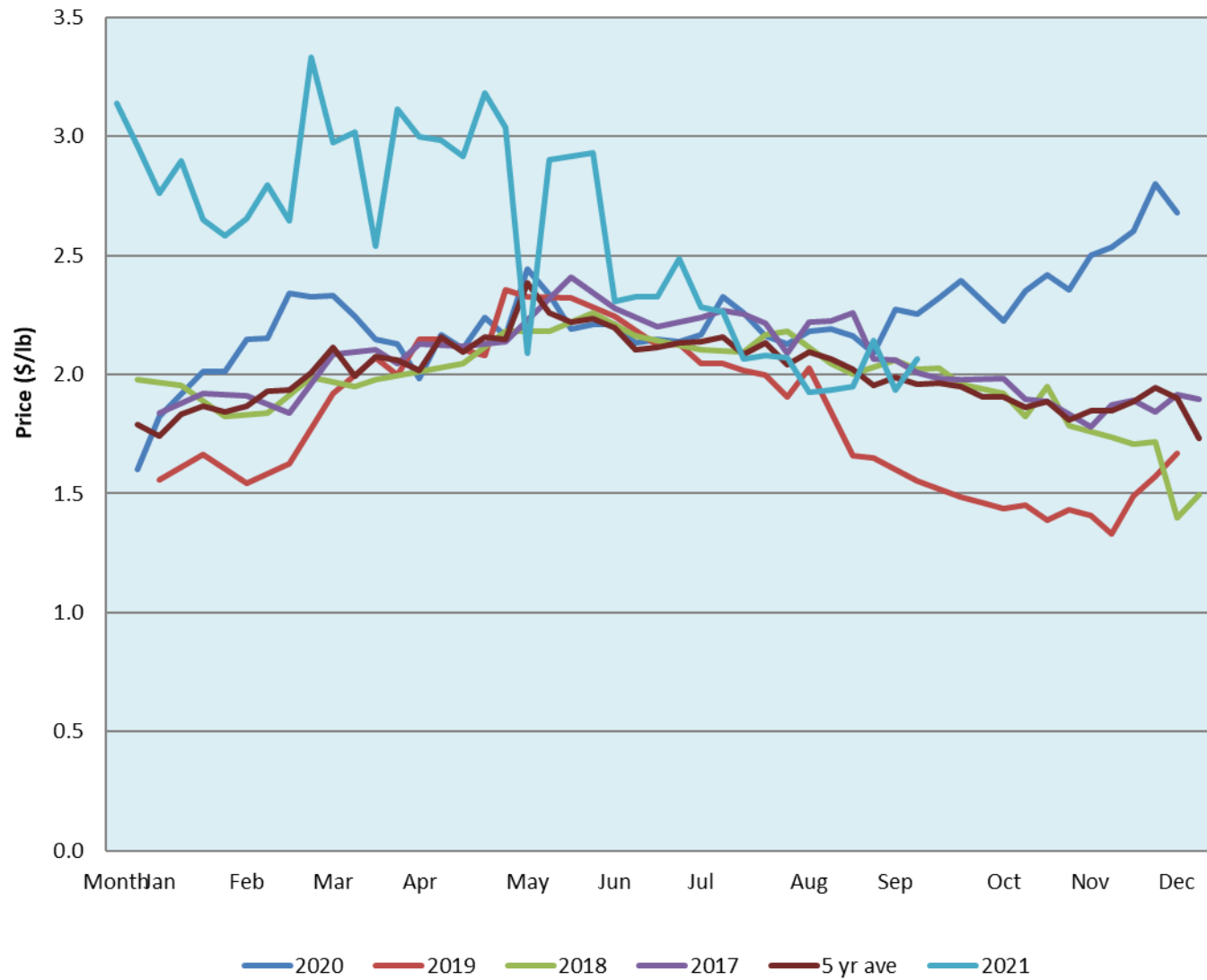
Date	Sale	Lambs (\$/lb)			Lambs (\$/lb)			Lambs (\$/lb)			Sheep(\$/lb): Bred ewes \$/hd		Total Head		
		Weight (lbs)	Head	low - high	Weight (lbs)	Head	low - high	Weight (lbs)	Head	low - high	low - high	low - high			
27-Sep-21	Beaver Hill www.beaverhillauctions.com	0-54: wool	-	2.10 - 2.60	70-85: wool	-	1.90 - 2.30	86-105:wool	-	1.85 - 2.10	Ewes: wool	1.30 - 1.90	1410		
		0-54: hair	-	1.70 - 2.20				86-105:hair			-	1.75 - 2.10		Rams: wool	1.26 - 1.85
		55-69: wool	-	2.00 - 2.50	70-85: hair	-	1.80 - 2.10	106+:wool	-	1.90 2.10	Rams: hair	1.28 - 1.70			
		55-69: hair	-	2.00 - 2.36				106+:hair			-	1.80 2.10		Bred Ewes	2.20 - 3.00
			-								-			Ewe&Lamb(s)	0.00 - 0.00
No sale this week	VJV Westlock www.vjvauction.com	0-69: wool	-	---	70-85: wool	-	---	86-105: wool	-	---	Ewes: wool	---		-	
			-					86-105: hair			-	---	Rams: wool		---
		0-69: hair	-	---	70-85: hair	-	---	106+: wool	-	---	Rams: hair	---			
			-					106+: hair			-	---	Bred Ewes:wool		---
			-								-		Ewe&Lamb:hair		---
information unavailable	Olds Auction www.oldsauction.com	30-50	-	---	70-80	-	---	90-100	-	---	Ewes	---	0 (incl.goats)		
		50-60	-	---				80-90			-	---		100-110	-
		60-70	-	--				110+	-	--	Bred Ewes	---			
25-Sep-21	Picture Butte www.picturebutteauction.ca							Feeder	-	1.85 - 2.15	Slaughter Ewes	1.08 - 1.35	-		
								Slaughter	-	2.03 - 2.13	Feeder Ewes	---			
											Ewe&lamb(s)	---			
											Bred ewes	---			
										Rams	1.25 - 1.40				

Ontario Live Animal Markets

27-Sep-21	OSI www.ontariosheep.org	0-50	74	1.10 - 2.30	65-80	293	2.20 - 2.65	95-110	161	2.12 - 2.25	Sheep	1.70 - 2.33	1437
		50-64	168	2.5 - 3.08	80-95	250	2.23 - 2.41	110+	34	2.11 - 2.20			
28-Sep-21	OLEX www.ontariosheep.org	0-50	45	3.10 - 3.48	65-79	529	2.38 - 3.15	95-109	834	2.08 - 2.27	Sheep	1.43 - 2.15	2880
		50-64	306	2.75 - 3.60	80-94	606	1.98 - 2.39	110+	190	1.91 - 2.25			
27-Sep-21	Embrun www.ontariosheep.org	0-50	42	3.05 - 3.65	65-79	136	2.6 - 2.92	95-109	74	1.88 - 2.30	Sheep	1.65 - 1.87	558
		50-64	108	2.80 - 3.10	80-94	117	2.1 - 2.55	110+	37	1.65 - 1.98			
23-Sep-21	Brussels www.ontariosheep.org	0-50	0	0 - 0.00	65-79	73	2.47 - 2.98	95-109	248	2.05 - 2.22	Sheep	1.78 - 2.14	567
		50-64	50	2.96 - 3.18	80-94	97	2.19 - 2.44	110+	12	2.03 - 2.03			

Alberta Lamb Producers does not endorse individual markets or verify prices provided.

Trends* in auction price for heavy lambs in Alberta



*Due to differences among auctions, prices are reported as 'trends' rather than averages.
 This graph is updated on weeks with two or more markets reporting prices.