

Alberta Live Animal Markets: Visit individual market websites for more information about applicable auction fees and upcoming sales

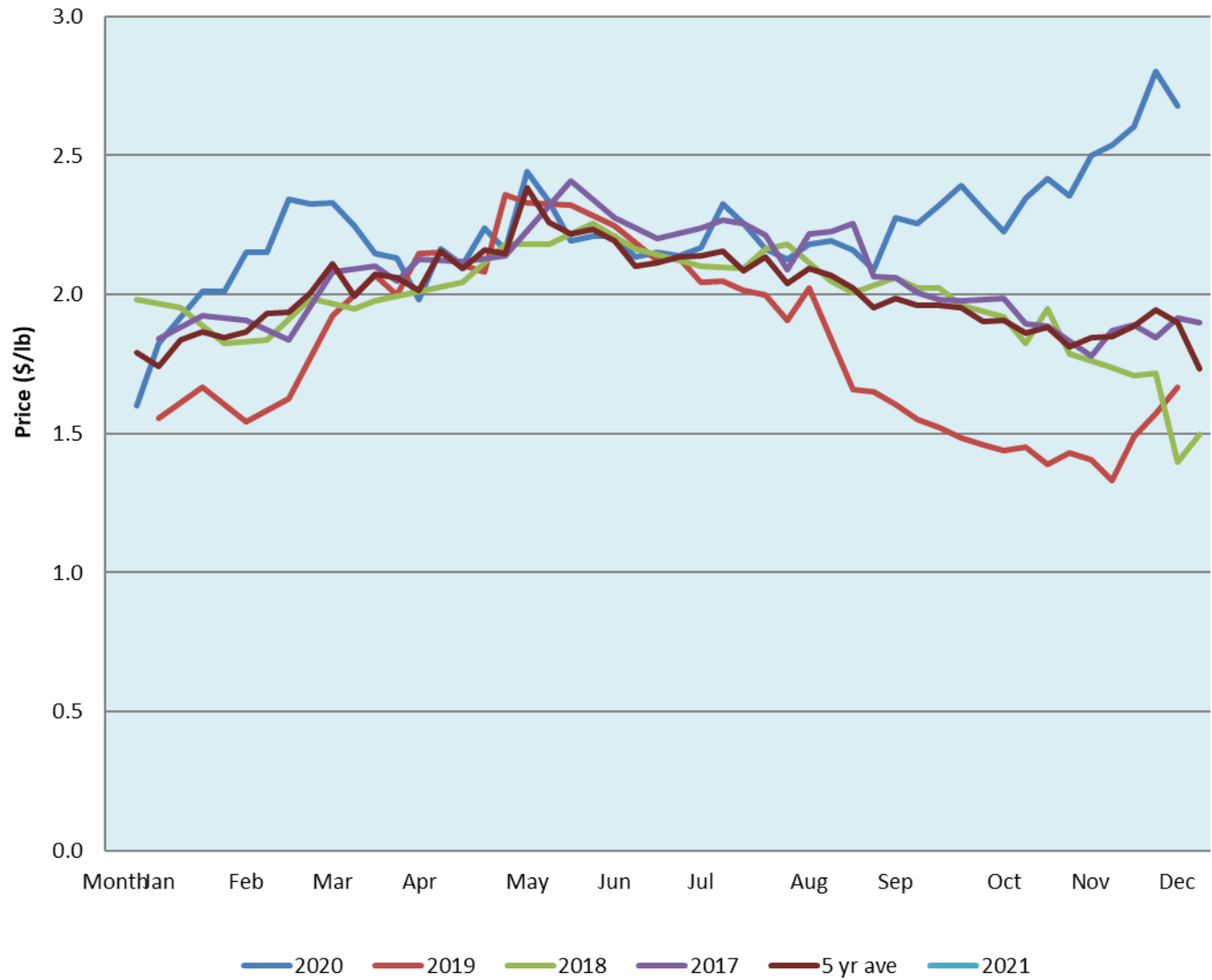
Date	Sale	Lambs (\$/lb)		Lambs (\$/lb)		Lambs (\$/lb)		Sheep(\$/lb): Bred ewes \$/hd		Head
		Weight (lbs)	low - high	Weight (lbs)	low - high	Weight (lbs)	low - high		low - high	
No sale this week	Beaver Hill www.beaverhillauctions.com	0-54: wool	- - -	70-85: wool	- - -	86-105: wool	- - -	Ewes: wool	- - -	-
		0-54: hair	- - -			86-105: hair	- - -	Ewes: hair	- - -	
		55-69: wool	- - -	70-85: hair	- - -	106+: wool	- - -	Rams: wool	- - -	
		55-69: hair	- - -			106+: hair	- - -	Rams: hair	- - -	
								Bred Ewes	- - -	
						Ewe&Lamb(s)	- - -			
No sale this week	VJV Westlock www.vjvauction.com	0-69: wool	- - -	70-85: wool	- - -	86-105: wool	- - -	Ewes: wool	- - -	-
						86-105: hair	- - -	Ewes: hair	- - -	
		0-69: hair	- - -	70-85: hair	- - -	106+: wool	- - -	Rams: wool	- - -	
						106+: hair	- - -	Rams: hair	- - -	
								Bred Ewes: wool	- - -	
								Ewe&Lamb: hair	- - -	
5-Jan-21	Olds Auction www.oldsauktion.com	30-50	3.00 - 3.17	70-80	3.53 - 3.80	90-100	3.50 - 3.67	Ewes	1.50 - 2.79	149 (incl.goats)
		50-60	3.25 - 3.45	80-90	3.48 - 3.97	100-110	3.50 - 3.67	Rams	2.14 - 2.97	
		60-70	3.63 - 2.83			110+	3.45 - 3.60	Bred Ewes	- - -	
Information unavailable	Picture Butte www.picturebutteauction.ca					Feeder	- - -	Slaughter Ewes	- - -	-
						Slaughter	- - -	Feeder Ewes	- - -	
								Ewe&lamb(s)	- - -	
								Bred ewes	- - -	
								Rams	- - -	

Ontario Live Animal Markets

4-Jan-21	OSI www.ontariosheep.org	0-50	1.60 - 4.65	65-80	3.73 - 4.02	95-110	3.03 - 3.32	Sheep	2.40 - 3.30	690
		50-64	3.60 - 4.03	80-95	2.13 - 3.78	110+	2.88 - 3.03			
5-Jan-21	OLEX www.ontariosheep.org	0-50	5.13 - 5.38	65-79	3.79 - 4.12	95-109	3.25 - 3.38	Sheep	2.75 - 3.15	1552
		50-64	4.00 - 4.55	80-94	3.33 - 3.78	110+	3.15 - 3.37			
4-Jan-21	Embrun www.ontariosheep.org	0-50	4.50 - 4.70	65-79	4.15 - 4.28	95-109	3.65 - 4.00	Sheep	2.50 - 3.15	214
		50-64	4.25 - 4.35	80-94	4.05 - 4.36	110+	3.40 - 3.60			
30-Dec-20	Brussels www.ontariosheep.org	0-50	3.30 - 3.30	65-79	3.85 - 3.96	95-109	3.07 - 3.20	Sheep	1.80 - 2.75	195
		50-64	4.10 - 4.31	80-94	3.17 - 3.18	110+	2.90 - 2.92			

Alberta Lamb Producers does not endorse individual markets or verify prices provided.

Trends* in auction price for heavy lambs in Alberta



*Due to differences among auctions, prices are reported as 'trends' rather than averages.
 This graph is updated on weeks with two or more markets reporting prices.