

Alberta Live Animal Markets: Visit individual market websites for more information about applicable auction fees and upcoming sales.

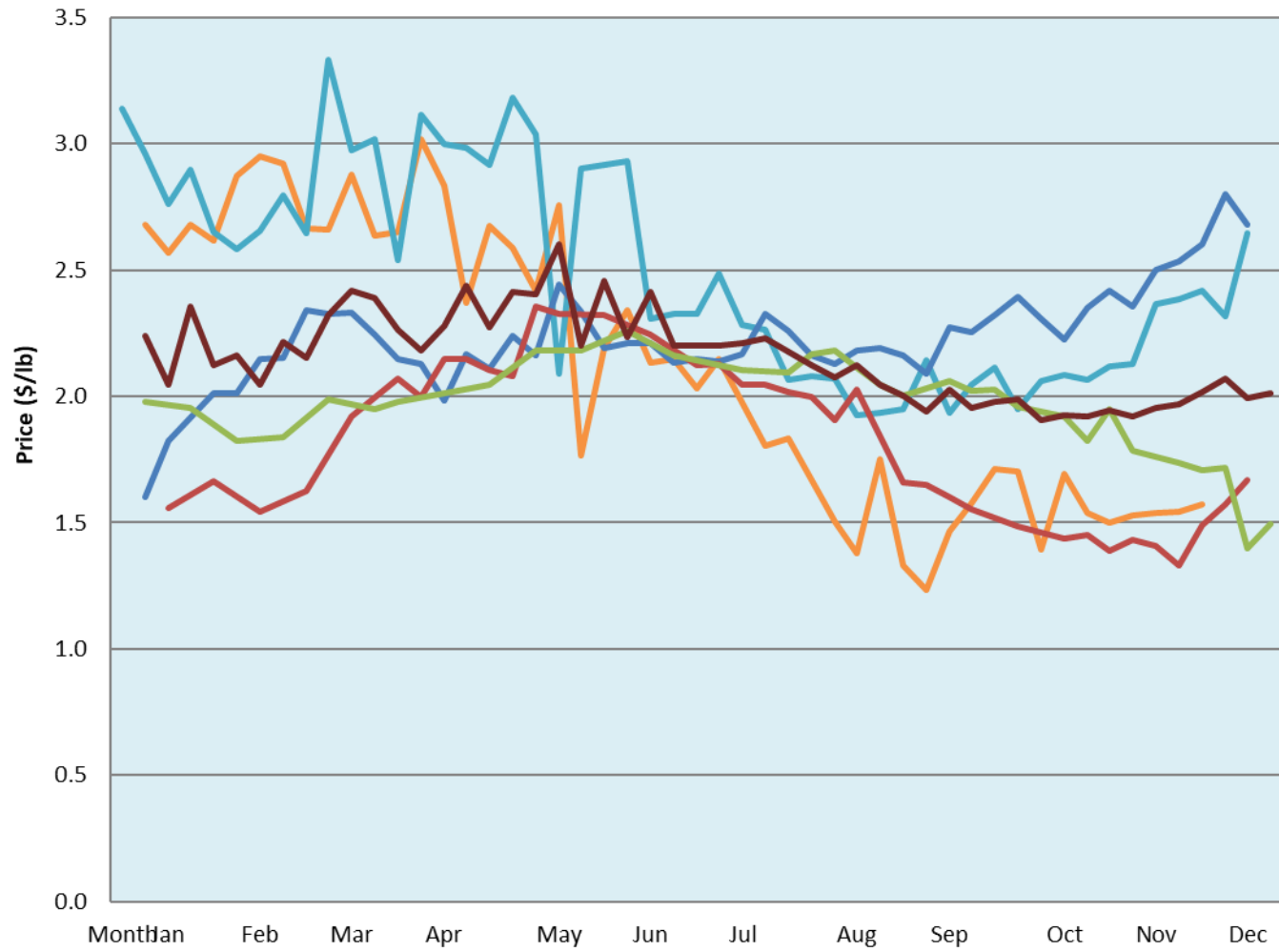
Date	Sale	Lambs (\$/lb)			Lambs (\$/lb)			Lambs (\$/lb)			Sheep(\$/lb): Bred ewes \$/hd		Total Head	
		Weight (lbs)	Head	low - high	Weight (lbs)	Head	low - high	Weight (lbs)	Head	low - high	low - high			
28-Nov-22	Beaver Hill www.beaverhillauctions.com	0-54: wool	-	1.80 - 2.25	70-85: wool	-	1.85 - 2.30	86-105:wool	-	1.66 - 2.00	Ewes: wool	1.15 - 1.50	1263	
		0-54: hair	-	1.65 - 2.05				86-105:hair			-	1.60 - 1.80		Rams: wool
		55-69: wool	-	1.90 - 2.37	70-85: hair	-	1.70 - 2.00	106+:wool	-	1.55 - 1.78	Rams: hair	1.30 - 1.61		
		55-69: hair	-	1.70 - 2.07				Bred Ewes			1.95 - 2.50			
			-					106+:hair			-	1.10 - 1.67		Ewe&Lamb(s)
No sale this week	VJV Westlock www.vjvauction.com	0-69: wool	-	- - -	70-85: wool	-	- - -	86-105: wool	-	- - -	Ewes: wool	- - -	-	
			-					86-105: hair	-	- - -	Ewes: hair	- - -		
			-						106+: wool	-	- - -	Rams: wool		- - -
		0-69: hair	-	- - -	70-85: hair	-	- - -	106+: hair	-	- - -	Rams: hair	- - -		
			-								Bred Ewes:wool	- - -		
										Ewe&Lamb:hair	- - -			
29-Nov-22	Olds Auction www.oldsauktion.com	30-50	-	1.68 - 1.81	70-80	-	1.8 - 2.25	90-100	-	1.77 - 1.94	Ewes	0.85 - 1.12	121 (incl.goats)	
		50-60	-	2.08 - 2.23	80-90	-	1.85 - 2.02	100-110	-	1.6 - 1.82	Rams	1.27 - 1.61		
		60-70	-	2.15 - 2.37				110+	-	1.29 - 1.58	Bred Ewes	- - -		
26-Nov-22	Picture Butte www.picturebutteauction.ca							Feeder	-	2 - 2.66	Slaughter Ewes	1.00 - 1.35	-	
								Slaughter	-	1.43 - 1.80	Feeder Ewes	- - -		
											Ewe&lamb(s)	- - -		
											Bred ewes	- - -		
										Rams	1.40 - 1.70			

Ontario Live Animal Markets

28-Nov-22	OSI www.ontariosheep.org	0-50	84	0.31 - 3.35	65-80	679	2.30 - 2.82	95-110	251	2.04 - 2.22	Sheep	1.40 - 2.08	2250
		50-64	345	2.55 - 3.16	80-95	262	2.09 - 2.48	110+	82	1.9 - 2.25			
29-Nov-22	OLEX www.ontariosheep.org	0-50	55	2.25 - 4.10	65-79	357	2.63 - 3.18	95-109	448	2.33 - 2.73	Sheep	1.13 - 2.03	2075
		50-64	239	3.03 - 4.15	80-94	298	2.28 - 2.93	110+	225	1.88 - 2.33			
28-Nov-22	Embrun www.ontariosheep.org	0-50	24	2.67 - 3.30	65-79	107	2.85 - 3.20	95-109	33	2.34 - 2.55	Sheep	1.35 - 1.70	413
		50-64	64	2.70 - 3.15	80-94	122	2.67 - 3.00	110+	2	2.32 - 2.40			
24-Nov-22	Brussels www.ontariosheep.org	0-50	8	3.9 - 4.70	65-79	86	3.09 - 3.56	95-109	60	2.7 - 2.98	Sheep	1.29 - 2.30	369
		50-64	26	3.55 - 4.05	80-94	111	2.94 - 3.53	110+	23	1.975 - 2.20			

Alberta Lamb Producers does not endorse individual markets or verify prices provided.

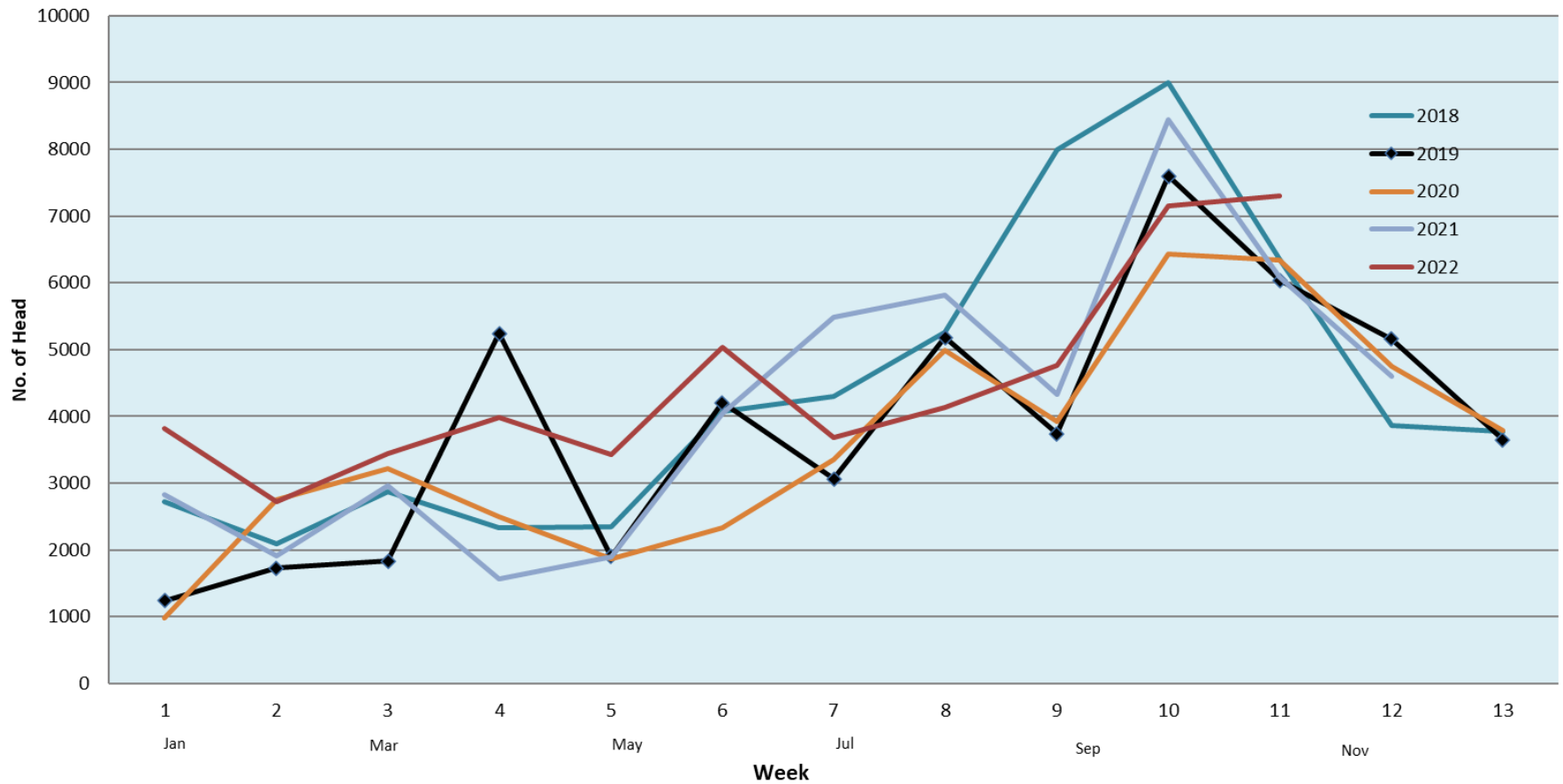
Trends* in auction price for heavy lambs in Alberta



— 2022 — 2021 — 2020 — 2019 — 2018 — 5 yr ave

*Due to differences among auctions, prices are reported as 'trends' rather than averages.
This graph is updated on weeks with two or more markets reporting prices.

Number of head reported sold through three Alberta live animal auctions



Note: Plotted numbers are the totals reported from 3 auction markets for each 4 week period

Month indicators are approximate and intended for reference only

Total/year: 2014 (51,383); 2015 (58,134); 2016 (49,846); 2017 (53,659); 2018 (56,980); 2019 (50,583); 2020 (47,221)