

**Alberta Live Animal Markets: Visit individual market websites for more information about applicable auction fees and upcoming sales.**

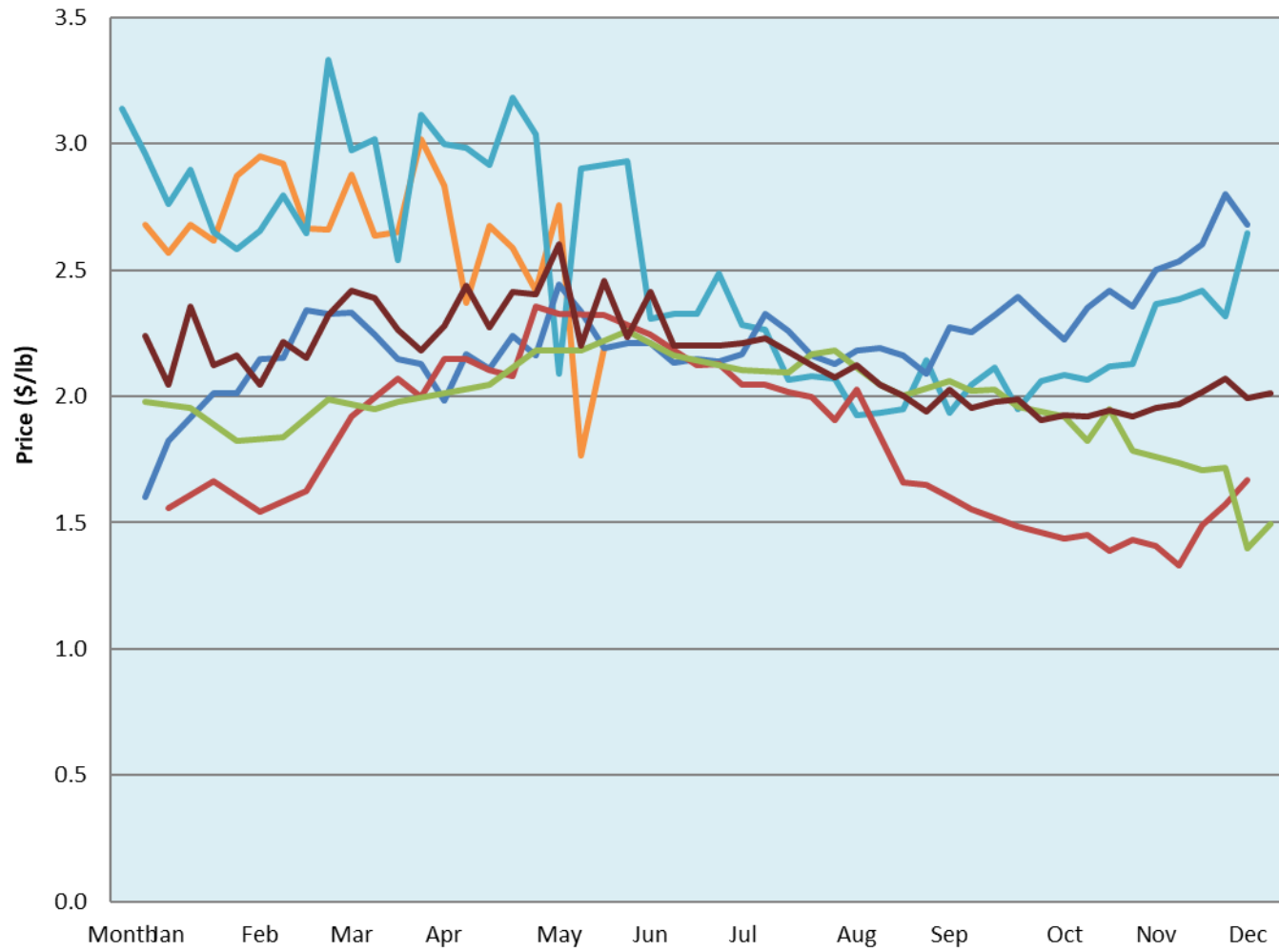
Date	Sale	Lambs (\$/lb)			Lambs (\$/lb)			Lambs (\$/lb)			Sheep(\$/lb): Bred ewes \$/hd		Total Head		
		Weight (lbs)	Head	low - high	Weight (lbs)	Head	low - high	Weight (lbs)	Head	low - high	low - high				
30-May-22	Beaver Hill <a href="http://www.beaverhillauctions.com">www.beaverhillauctions.com</a>	0-54: wool	-	1.95 - 2.50	70-85: wool	-	2.20 - 2.55	86-105:wool	-	2.15 - 2.55	Ewes: wool	0.80 - 1.70	1201		
		0-54: hair	-	1.50 - 1.75				86-105:hair			-	1.90 - 2.20		Ewes: hair	0.80 - 1.70
		55-69: wool	-	2.10 - 2.55	70-85: hair	-	1.70 - 2.30	106+:wool	-	2.10 - 2.40	Rams: wool	0.90 - 2.35			
		55-69: hair	-	1.70 - 2.35				106+:hair			-	0.80 - 2.10		Rams: hair	1.00 - 1.60
			-								-			Bred Ewes	2.00 - 3.50
					-			-		Ewe&Lamb(s)	2.80 - 3.50				
No sale this week	VJV Westlock <a href="http://www.vjvauction.com">www.vjvauction.com</a>	0-69: wool	-	- - -	70-85: wool	-	- - -	86-105: wool	-	- - -	Ewes: wool	- - -	-		
			-			-		86-105: hair	-	- - -	Ewes: hair	- - -			
			-			-			106+: wool	-	- - -	Rams: wool		- - -	
		0-69: hair	-	- - -	70-85: hair	-	- - -	106+: hair	-	- - -	Rams: hair	- - -			
			-			-				-	- - -	Bred Ewes:wool		- - -	
					-			-	- - -	Ewe&Lamb:hair	- - -				
31-May-22	Olds Auction <a href="http://www.oldsauktion.com">www.oldsauktion.com</a>	30-50	-	2.1 - 3.49	70-80	-	1.81 - 2.42	90-100	-	2.22 - 2.58	Ewes	0.60 - 1.47	250  (incl.goats)		
		50-60	-	2.07 - 2.30	80-90	-	2.3 - 2.50	100-110	-	1.9 - 2.55	Rams	0.82 - 1.18			
		60-70	-	2.1 - 2.33				110+	-	1.76 - 2.48	Bred Ewes	- - -			
28-May-22	Picture Butte <a href="http://www.picturebutteauction.ca">www.picturebutteauction.ca</a>							Feeder	-	2.38 - 3.40	Slaughter Ewes	0.67 - 1.03	-		
								Slaughter	-	2.11 - 2.30	Feeder Ewes	- - -			
											Ewe&lamb(s)	3.00 - 3.00			
											Bred ewes	- - -			
											Rams	0.82 - 1.18			

**Ontario Live Animal Markets**

30-May-22	OSI <a href="http://www.ontariosheep.org">www.ontariosheep.org</a>	0-50	68	2.23 - 3.10	65-80	314	2.18 - 2.36	95-110	70	1.8 - 2.00	Sheep	1.10 - 1.83	1820
		50-64	98	2.025 - 2.65	80-95	538	2.06 - 2.31	110+	0	0 - 0.00			
31-May-22	OLEX <a href="http://www.ontariosheep.org">www.ontariosheep.org</a>	0-50	103	2.35 - 3.18	65-79	386	2.55 - 3.03	95-109	661	2.35 - 2.90	Sheep	1.20 - 2.20	2531
		50-64	284	2.43 - 3.08	80-94	516	2.50 - 2.93	110+	73	2.03 - 2.85			
30-May-22	Embrun <a href="http://www.ontariosheep.org">www.ontariosheep.org</a>	0-50	6	2.70 - 2.75	65-79	99	2.82 - 3.25	95-109	66	2.65 - 3.20	Sheep	0.56 - 1.35	385
		50-64	19	2.35 - 2.85	80-94	103	2.75 - 3.20	110+	20	1.95 - 2.40			
26-May-22	Brussels <a href="http://www.ontariosheep.org">www.ontariosheep.org</a>	0-50	6	2 - 3.00	65-79	112	2.325 - 2.70	95-109	83	2.35 - 2.60	Sheep	1.05 - 2.00	544
		50-64	81	2.75 - 3.08	80-94	137	2.37 - 2.75	110+	20	1.675 - 2.40			

**Alberta Lamb Producers does not endorse individual markets or verify prices provided.**

### Trends\* in auction price for heavy lambs in Alberta



— 2022   
 — 2021   
 — 2020   
 — 2019   
 — 2018   
 — 5 yr ave

\*Due to differences among auctions, prices are reported as 'trends' rather than averages.  
 This graph is updated on weeks with two or more markets reporting prices.