

**Alberta Live Animal Markets: Visit individual market websites for more information about applicable auction fees and upcoming sales.**

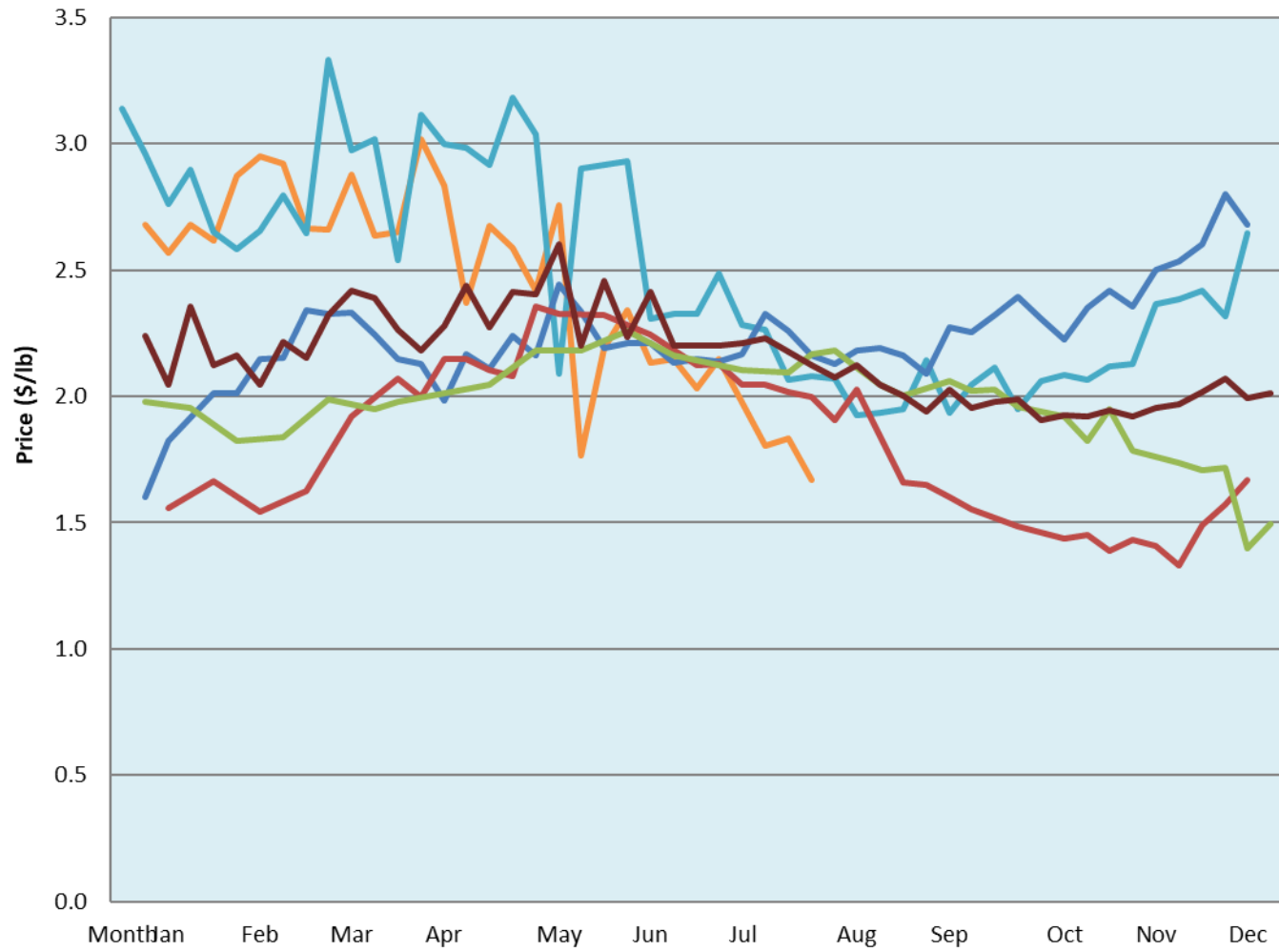
Date	Sale	Lambs (\$/lb)			Lambs (\$/lb)			Lambs (\$/lb)			Sheep(\$/lb): Bred ewes \$/hd		Total Head		
		Weight (lbs)	Head	low - high	Weight (lbs)	Head	low - high	Weight (lbs)	Head	low - high	low - high	low - high			
No sale this week	Beaver Hill <a href="http://www.beaverhillauctions.com">www.beaverhillauctions.com</a>	0-54: wool	-	0.00 - 0.00	70-85: wool	-	0.00 - 0.00	86-105:wool	-	0.00 - 0.00	Ewes: wool	0.00 - 0.00	0		
		0-54: hair	-	0.00 - 0.00				86-105:hair			-	0.00 - 0.00		Ewes: hair	0.00 - 0.00
		55-69: wool	-	0.00 - 0.00	70-85: hair	-	0.00 - 0.00	106+:wool	-	0.00 - 0.00	Rams: wool	0.00 - 0.00			
		55-69: hair	-	0.00 - 0.00				106+:hair			-	0.00 - 0.00		Rams: hair	0.00 - 0.00
			-								-			Bred Ewes	0.00 - 0.00
								-	0.00 - 0.00	Ewe&Lamb(s)	0.00 - 0.00				
No sale this week	VJV Westlock <a href="http://www.vjvauction.com">www.vjvauction.com</a>	0-69: wool	-	- - -	70-85: wool	-	- - -	86-105: wool	-	- - -	Ewes: wool	- - -	-		
			-					86-105: hair			-	- - -		Ewes: hair	- - -
		0-69: hair	-	- - -	70-85: hair	-	- - -	106+: wool	-	- - -	Rams: wool	- - -			
			-					106+: hair			-	- - -		Rams: hair	- - -
			-								-			Bred Ewes:wool	- - -
								-	- - -	Ewe&Lamb:hair	- - -				
02-Aug-22	Olds Auction <a href="http://www.oldsauktion.com">www.oldsauktion.com</a>	30-50	-	1.67 - 1.85	70-80	-	1.87 - 1.92	90-100	-	1.55 - 1.84	Ewes	0.65 - 0.98	360  (incl.goats)		
		50-60	-	1.75 - 1.90	80-90	-	1.67 - 1.83	100-110	-	1.6 - 1.82	Rams	0.85 - 1.04			
		60-70	-	1.74 - 1.96				110+	-	1.54 - 1.80	Bred Ewes	- - -			
Information unavailable	Picture Butte <a href="http://www.picturebutteauction.ca">www.picturebutteauction.ca</a>							Feeder	-	- - -	Slaughter Ewes	- - -	-		
								Slaughter	-	- - -	Feeder Ewes	- - -			
											Ewe&lamb(s)	- - -			
											Bred ewes	- - -			
										Rams	- - -				

**Ontario Live Animal Markets**

01-Aug-22	OSI <a href="http://www.ontariosheep.org">www.ontariosheep.org</a>	0-50	19	1.00 - 2.40	65-80	116	2.18 - 2.45	95-110	244	1.8 - 2.12	Sheep	1.25 - 1.93	1331
		50-64	24	2.2 - 2.40	80-95	342	1.70 - 2.14	110+	79	1.96 - 2.03			
02-Aug-22	OLEX <a href="http://www.ontariosheep.org">www.ontariosheep.org</a>	0-50	69	2.25 - 2.80	65-79	591	1.85 - 2.50	95-109	650	1.78 - 2.05	Sheep	1.08 - 1.53	2980
		50-64	239	2.25 - 2.93	80-94	463	1.75 - 2.18	110+	488	1.72 - 1.89			
01-Aug-22	Embrun <a href="http://www.ontariosheep.org">www.ontariosheep.org</a>	0-50	16	1.35 - 1.60	65-79	141	2.1 - 2.40	95-109	41	2 - 2.54	Sheep	0.75 - 1.35	356
		50-64	49	2.05 - 2.30	80-94	79	2.05 - 2.60	110+	4	1.75 - 1.75			
28-Jul-22	Brussels <a href="http://www.ontariosheep.org">www.ontariosheep.org</a>	0-50	11	2 - 2.60	65-79	126	2.2 - 3.04	95-109	66	1.8 - 2.18	Sheep	0.90 - 1.85	524
		50-64	46	2.45 - 3.05	80-94	125	2.1 - 2.39	110+	44	1.95 - 2.05			

**Alberta Lamb Producers does not endorse individual markets or verify prices provided.**

### Trends\* in auction price for heavy lambs in Alberta



— 2022 — 2021 — 2020 — 2019 — 2018 — 5 yr ave

\*Due to differences among auctions, prices are reported as 'trends' rather than averages.  
This graph is updated on weeks with two or more markets reporting prices.