

Alberta Live Animal Markets: Visit individual market websites for more information about applicable auction fees and upcoming sales.

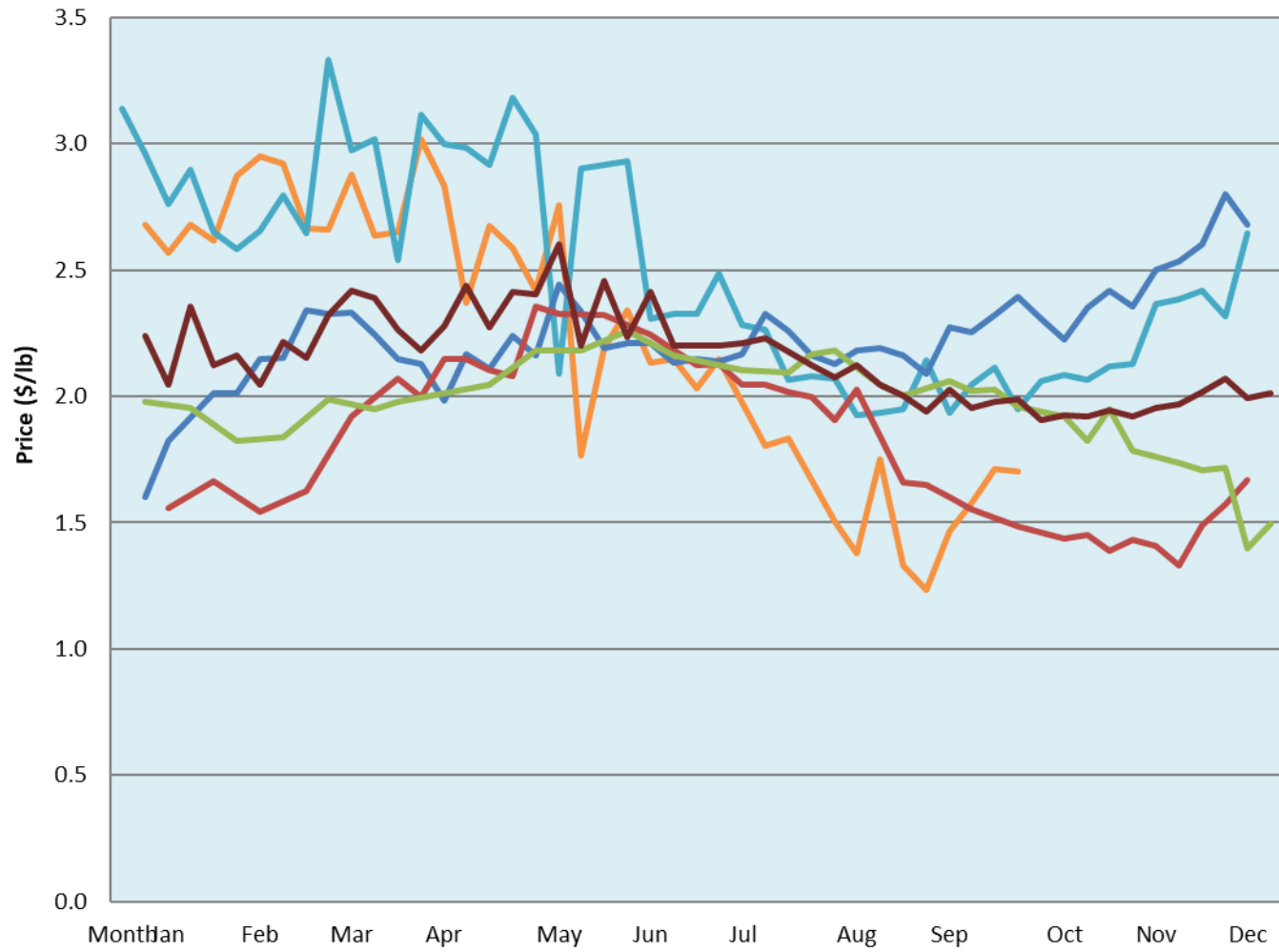
Date	Sale	Lambs (\$/lb)			Lambs (\$/lb)			Lambs (\$/lb)			Sheep(\$/lb): Bred ewes \$/hd		Total Head		
		Weight (lbs)	Head	low - high	Weight (lbs)	Head	low - high	Weight (lbs)	Head	low - high	low - high				
03-Oct-22	Beaver Hill www.beaverhillauctions.com	0-54: wool	-	2.00 - 2.55	70-85: wool	-	1.80 - 2.45	86-105:wool	-	1.60 - 2.18	Ewes: wool	0.80 - 1.40	1643		
		0-54: hair	-	1.80 - 2.10				86-105:hair			-	1.55 - 1.95		Rams: wool	0.70 - 1.80
		55-69: wool	-	2.10 - 2.65				106+:wool			-	1.55 - 1.86		Rams: hair	0.94 - 1.66
		55-69: hair	-	1.90 - 2.30	70-85: hair	-	1.75 - 2.00	106+:hair	-	0.80 - 1.75	Bred Ewes	1.90 - 2.60			
											Ewe&Lamb(s)	0.00 - 0.00			
No sale this week	VJV Westlock www.vjvauction.com	0-69: wool	-	- - -	70-85: wool	-	- - -	86-105: wool	-	- - -	Ewes: wool	- - -	-		
			-					86-105: hair	-	- - -	Ewes: hair	- - -			
			-						106+: wool	-	- - -	Rams: wool		- - -	
		0-69: hair	-	- - -	70-85: hair	-	- - -	106+: hair	-	- - -	Rams: hair	- - -			
			-								Bred Ewes:wool	- - -			
04-Oct-22	Olds Auction www.oldsauktion.com	30-50	-	1.9 - 1.93	70-80	-	2.02 - 2.47	90-100	-	1.78 - 2.12	Ewes	0.75 - 1.34	420 (incl.goats)		
		50-60	-	1.61 - 2.41	80-90	-	1.91 - 2.10	100-110	-	1.68 - 1.91	Rams	0.60 - 1.06			
		60-70	-	2.07 - 2.45				110+	-	1.51 - 1.76	Bred Ewes	- - -			
01-Oct-22	Picture Butte www.picturebutteauction.ca							Feeder	-	1.81 - 2.01	Slaughter Ewes	0.90 - 1.20	-		
								Slaughter	-	1.68 - 1.85	Feeder Ewes	3.00 - -			
											Ewe&lamb(s)	- - -			
											Bred ewes	- - -			
										Rams	2.00 - 2.00				

Ontario Live Animal Markets

03-Oct-22	OSI www.ontariosheep.org	0-50	34	2.15 - 3.20	65-80	163	2.40 - 2.90	95-110	139	1.89 - 2.05	Sheep	0.60 - 1.57	1421
		50-64	31	2.2 - 2.78	80-95	187	2.13 - 2.38	110+	17	1.8 - 1.85			
04-Oct-22	OLEX www.ontariosheep.org	0-50	60	2.35 - 3.45	65-79	201	2.40 - 3.10	95-109	538	2.15 - 2.40	Sheep	0.60 - 1.60	1768
		50-64	142	2.28 - 2.75	80-94	303	2.28 - 2.60	110+	137	1.75 - 2.05			
03-Oct-22	Embrun www.ontariosheep.org	0-50	7	2.00 - 2.00	65-79	122	1.84 - 2.35	95-109	65	1.98 - 2.45	Sheep	0.82 - 1.35	398
		50-64	29	1.90 - 2.35	80-94	102	2 - 2.55	110+	1	1.82 - 1.82			
29-Sep-22	Brussels www.ontariosheep.org	0-50	23	1.5 - 2.65	65-79	71	2.425 - 2.99	95-109	56	1.93 - 2.15	Sheep	1.00 - 1.75	424
		50-64	35	2.1 - 2.55	80-94	112	2.05 - 2.63	110+	53	1.8 - 2.00			

Alberta Lamb Producers does not endorse individual markets or verify prices provided.

Trends* in auction price for heavy lambs in Alberta



— 2022 — 2021 — 2020 — 2019 — 2018 — 5 yr ave

*Due to differences among auctions, prices are reported as 'trends' rather than averages.
This graph is updated on weeks with two or more markets reporting prices.