

**Alberta Live Animal Markets: Visit individual market websites for more information about applicable auction fees and upcoming sales.**

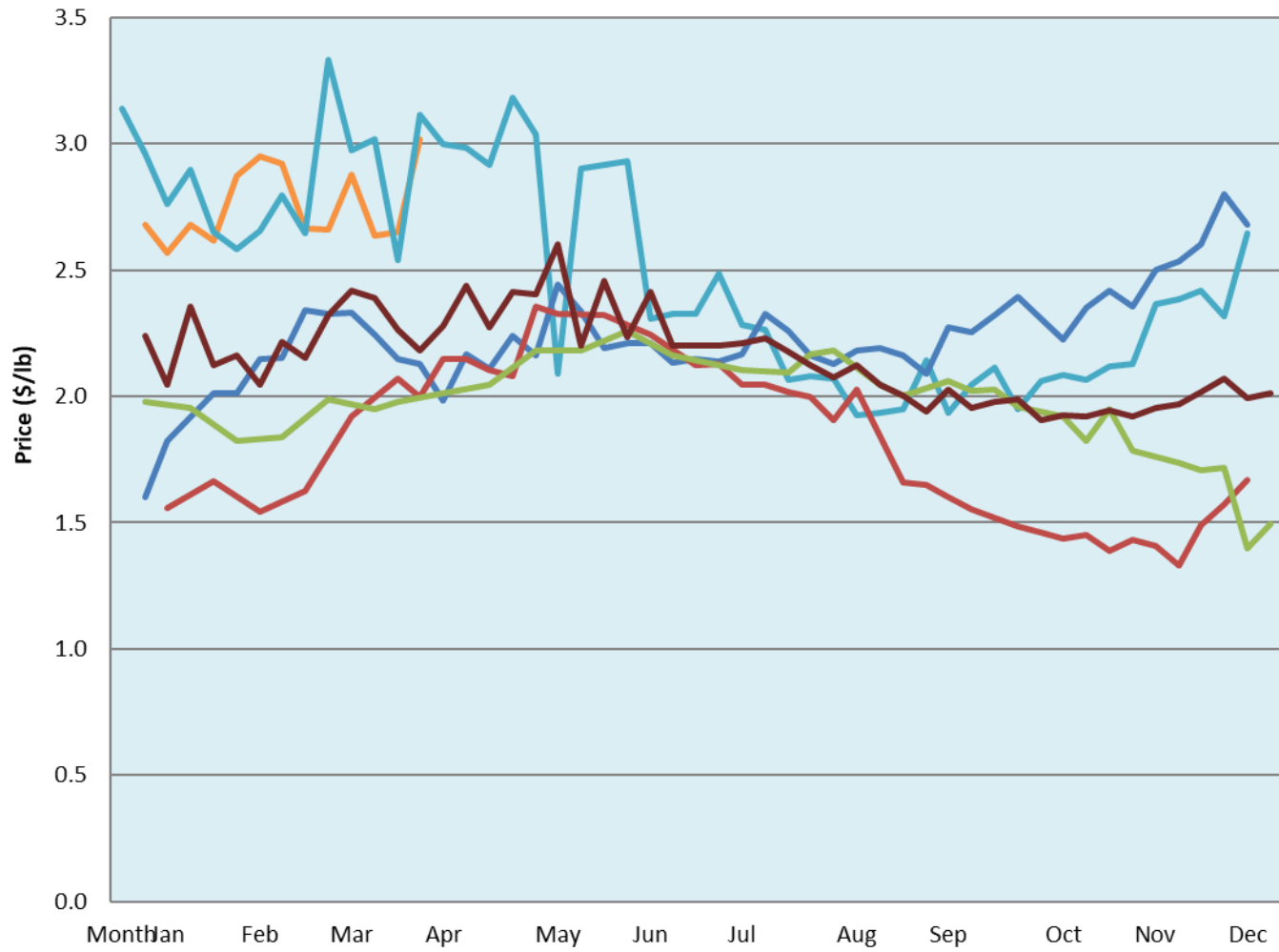
Date	Sale	Lambs (\$/lb)			Lambs (\$/lb)			Lambs (\$/lb)			Sheep(\$/lb): Bred ewes \$/hd		Total Head		
		Weight (lbs)	Head	low - high	Weight (lbs)	Head	low - high	Weight (lbs)	Head	low - high	low - high				
4-Apr-22	Beaver Hill <a href="http://www.beaverhillauctions.com">www.beaverhillauctions.com</a>	0-54: wool	-	2.75 - 3.45	70-85: wool	-	3.00 - 3.70	86-105:wool	-	2.75 - 3.35	Ewes: wool	1.07 - 2.10	936		
		0-54: hair	-	1.90 - 2.60				86-105:hair			-	2.50 - 3.10		Rams: wool	1.20 - 2.25
		55-69: wool	-	2.90 - 3.75	70-85: hair	-	2.50 - 3.30	106+:wool	-	2.65 - 3.12	Rams: hair	1.20 - 2.20			
		55-69: hair	-	2.30 - 3.30				106+:hair			-	1.20 - 2.70		Bred Ewes	2.70 - 4.05
			-								-			Ewe&Lamb(s)	3.00 - 3.50
No sale this week	VJV Westlock <a href="http://www.vjvauction.com">www.vjvauction.com</a>	0-69: wool	-	- - -	70-85: wool	-	- - -	86-105: wool	-	- - -	Ewes: wool	- - -	-		
			-			-		86-105: hair	-	- - -	Ewes: hair	- - -			
			-			-			106+: wool	-	- - -	Rams: wool		- - -	
		0-69: hair	-	- - -	70-85: hair	-	- - -	106+: hair	-	- - -	Rams: hair	- - -			
			-			-				-	- - -	Bred Ewes:wool		- - -	
information unavailable	Olds Auction <a href="http://www.oldsauktion.com">www.oldsauktion.com</a>	30-50	-	- - -	70-80	-	- - -	90-100	-	- - -	Ewes	- - -	-		
		50-60	-	- - -	80-90	-	-	100-110	-	- - -	Rams	- - -			
		60-70	-	- - -				110+	-	- - -	Bred Ewes	- - -		(incl.goats)	
2-Apr-22	Picture Butte <a href="http://www.picturebutteauction.ca">www.picturebutteauction.ca</a>							Feeder	-	3.35 - 3.79	Slaughter Ewes	1.09 - 1.58	-		
								Slaughter	-	2.76 - 3.55	Feeder Ewes	- - -			
											Ewe&lamb(s)	- - -			
											Bred ewes	- - -			
										Rams	1.32 - 1.88				

**Ontario Live Animal Markets**

4-Apr-22	OSI <a href="http://www.ontariosheep.org">www.ontariosheep.org</a>	0-50	108	3.15 - 4.55	65-80	434	3.70 - 4.65	95-110	166	3.55 - 3.68	Sheep	1.20 - 2.55	1747
		50-64	240	4.35 - 4.73	80-95	159	3.45 - 3.90	110+	15	3.39 - 3.65			
5-Apr-22	OLEX <a href="http://www.ontariosheep.org">www.ontariosheep.org</a>	0-50	198	4.85 - 5.50	65-79	787	4.00 - 4.70	95-109	582	3.58 - 3.84	Sheep	0.50 - 2.10	3768
		50-64	753	4.50 - 4.93	80-94	540	3.68 - 4.10	110+	310	3.35 - 3.68			
4-Apr-22	Embrun <a href="http://www.ontariosheep.org">www.ontariosheep.org</a>	0-50	29	2.75 - 4.45	65-79	169	4.12 - 4.30	95-109	49	3.8 - 3.98	Sheep	0.58 - 1.62	532
		50-64	89	4.00 - 4.69	80-94	117	3.95 - 4.22	110+	18	2.3 - 3.80			
31-Mar-22	Brussels <a href="http://www.ontariosheep.org">www.ontariosheep.org</a>	0-50	26	4.25 - 4.70	65-79	209	3.925 - 4.30	95-109	128	3.45 - 3.65	Sheep	0.60 - 2.30	858
		50-64	194	4.37 - 4.65	80-94	108	3.5 - 3.83	110+	43	2.64 - 3.00			

**Alberta Lamb Producers does not endorse individual markets or verify prices provided.**

### Trends\* in auction price for heavy lambs in Alberta



— 2022 — 2021 — 2020 — 2019 — 2018 — 5 yr ave

\*Due to differences among auctions, prices are reported as 'trends' rather than averages.  
This graph is updated on weeks with two or more markets reporting prices.