

Alberta Live Animal Markets: Visit individual market websites for more information about applicable auction fees and upcoming sales.

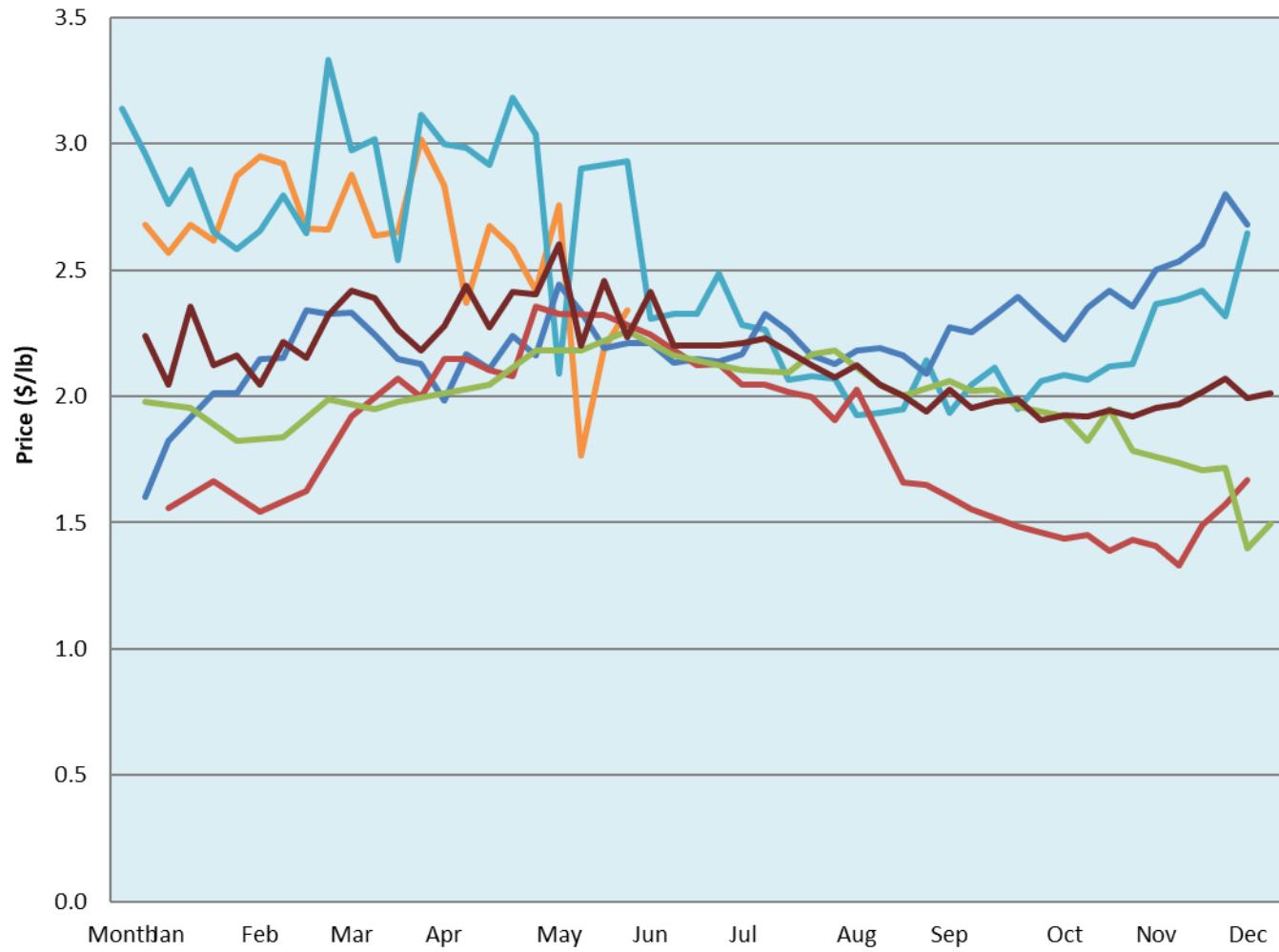
Date	Sale	Lambs (\$/lb)			Lambs (\$/lb)			Lambs (\$/lb)			Sheep(\$/lb): Bred ewes \$/hd		Total Head		
		Weight (lbs)	Head	low - high	Weight (lbs)	Head	low - high	Weight (lbs)	Head	low - high	low - high				
6-Jun-22	Beaver Hill www.beaverhillauctions.com	0-54: wool	-	2.00 - 2.56	70-85: wool	-	2.55 - 3.12	86-105:wool	-	2.30 - 2.82	Ewes: wool	0.90 - 2.60	688		
		0-54: hair	-	1.75 - 2.15				86-105:hair			-	2.10 - 2.40		Ewes: hair	1.00 - 1.70
		55-69: wool	-	2.30 - 2.97				106+:wool			-	2.30 - 2.60		Rams: wool	0.90 - 2.55
		55-69: hair	-	1.70 - 2.35	70-85: hair	-	2.10 - 2.50	106+:hair	-	1.00 - 2.20	Rams: hair	1.40 - 2.20			
											Ewe&Lamb(s)	2.80 - 3.20		Bred Ewes	0.00 - 0.00
No sale this week	VJV Westlock www.vjvauction.com	0-69: wool	-	- - -	70-85: wool	-	- - -	86-105: wool	-	- - -	Ewes: wool	- - -	-		
								86-105: hair	-	- - -	Ewes: hair	- - -			
									106+: wool	-	- - -	Rams: wool		- - -	
		0-69: hair	-	- - -	70-85: hair	-	- - -	106+: hair	-	- - -	Rams: hair	- - -			
											Bred Ewes:wool	- - -			
7-Jun-22	Olds Auction www.oldsauktion.com	30-50	-	2.4 - 2.90	70-80	-	2.47 - 2.64	90-100	-	2.04 - 2.22	Ewes	0.80 - 1.27	257 (incl.goats)		
		50-60	-	2.41 - 2.79	80-90	-	1.74 - 2.31	100-110	-	2.06 - 2.23	Rams	0.90 - 1.17			
		60-70	-	2.25 - 2.79				110+	-	2 - 2.25	Bred Ewes	- - -			
4-Jun-22	Picture Butte www.picturebutteauction.ca							Feeder	-	1.89 - 4.50	Slaughter Ewes	0.68 - 1.32	-		
								Slaughter	-	2.41 - 2.48	Feeder Ewes	- - -			
											Ewe&lamb(s)	3.00 - 3.00			
											Bred ewes	- - -			
										Rams	1.95 - 1.95				

Ontario Live Animal Markets

6-Jun-22	OSI www.ontariosheep.org	0-50	8	2.05 - 2.80	65-80	43	2.55 - 2.91	95-110	94	2.35 - 2.51	Sheep	1.35 - 1.81	834
		50-64	25	2.575 - 2.80	80-95	78	2.61 - 2.82	110+	90	2.35 - 2.67			
7-Jun-22	OLEX www.ontariosheep.org	0-50	182	3.40 - 4.20	65-79	376	3.10 - 3.73	95-109	825	2.55 - 2.73	Sheep	1.10 - 1.95	2686
		50-64	205	2.95 - 3.50	80-94	501	2.70 - 3.15	110+	165	2.00 - 2.68			
6-Jun-22	Embrun www.ontariosheep.org	0-50	14	2.00 - 2.60	65-79	114	2.95 - 3.15	95-109	7	2.82 - 3.10	Sheep	1.00 - 1.46	307
		50-64	49	2.50 - 2.98	80-94	85	2.92 - 3.10	110+	0	0 - 0.00			
2-Jun-22	Brussels www.ontariosheep.org	0-50	20	2.425 - 2.65	65-79	116	2.79 - 2.99	95-109	81	2.425 - 2.93	Sheep	1.00 - 2.00	483
		50-64	66	2.45 - 2.88	80-94	91	2.55 - 2.79	110+	9	2.5 - 2.98			

Alberta Lamb Producers does not endorse individual markets or verify prices provided.

Trends* in auction price for heavy lambs in Alberta



— 2022 — 2021 — 2020 — 2019 — 2018 — 5 yr ave

*Due to differences among auctions, prices are reported as 'trends' rather than averages.
This graph is updated on weeks with two or more markets reporting prices.