

Alberta Live Animal Markets: Visit individual market websites for more information about applicable auction fees and upcoming sales.

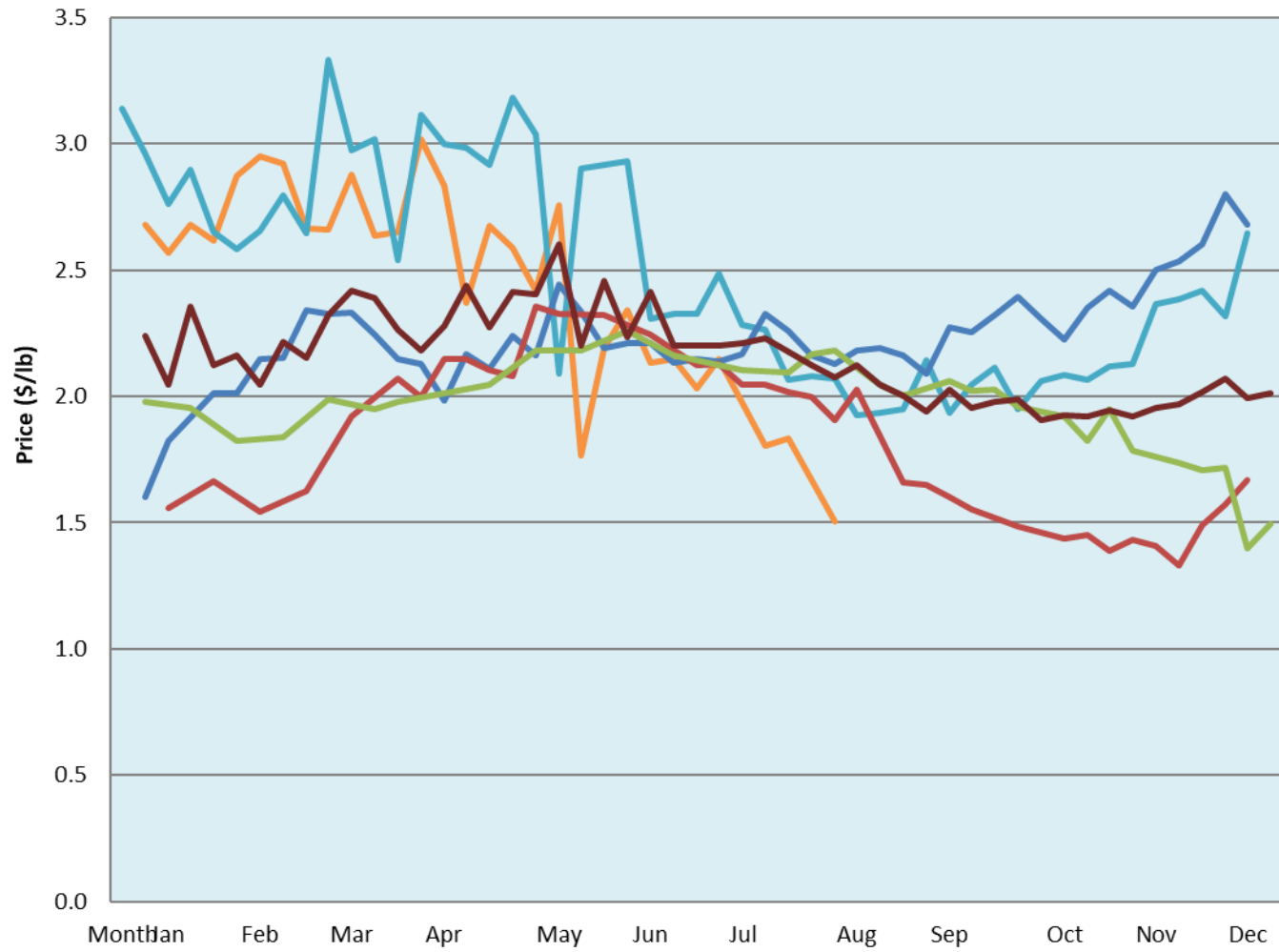
Date	Sale	Lambs (\$/lb)			Lambs (\$/lb)			Lambs (\$/lb)			Sheep(\$/lb): Bred ewes \$/hd		Total Head		
		Weight (lbs)	Head	low - high	Weight (lbs)	Head	low - high	Weight (lbs)	Head	low - high	low - high				
08-Aug-22	Beaver Hill www.beaverhillauctions.com	0-54: wool	-	1.80 - 2.60	70-85: wool	-	1.45 - 1.90	86-105:wool	-	1.30 - 1.75	Ewes: wool	0.75 - 1.27	1604		
		0-54: hair	-	1.35 - 1.75				86-105:hair			-	1.20 - 1.55		Rams: wool	0.75 - 1.15
		55-69: wool	-	1.60 - 2.20	70-85: hair	-	1.35 - 1.65	106+:wool	-	1.30 - 1.60	Rams: hair	0.70 - 1.15			
		55-69: hair	-	1.40 - 1.90				106+:hair			-	0.70 - 1.50		Bred Ewes	0.00 - 0.00
			-								-			Ewe&Lamb(s)	0.00 - 0.00
Information unavailable	VJV Westlock www.vjvauction.com	0-69: wool	-	- - -	70-85: wool	-	- - -	86-105: wool	-	- - -	Ewes: wool	- - -	-		
			-			-		86-105: hair	-	- - -	Ewes: hair	- - -			
			-			-			106+: wool	-	- - -	Rams: wool		- - -	
		0-69: hair	-	- - -	70-85: hair	-	- - -	106+: hair	-	- - -	Rams: hair	- - -			
			-			-				-	- - -	Bred Ewes:wool		- - -	
09-Aug-22	Olds Auction www.oldsauktion.com	30-50	-	1.67 - 1.85	70-80	-	1.63 - 1.90	90-100	-	1.58 - 1.86	Ewes	0.57 - 0.78	307 (incl.goats)		
		50-60	-	1.67 - 1.84	80-90	-	1.63 - 1.85	100-110	-	1.31 - 1.75	Rams	0.85 - 1.04			
		60-70	-	1.8 - 1.88				110+	-	1.41 - 1.68	Bred Ewes	- - -			
06-Aug-22	Picture Butte www.picturebutteauction.ca							Feeder	-	1.62 - 1.67	Slaughter Ewes	0.93 - 1.15	-		
								Slaughter	-	1.27 - 1.77	Feeder Ewes	- - -			
											Ewe&lamb(s)	- - -			
											Bred ewes	- - -			
										Rams	1.10 - 1.40				

Ontario Live Animal Markets

08-Aug-22	OSI www.ontariosheep.org	0-50	7	1.00 - 2.50	65-80	91	2.08 - 2.42	95-110	113	1.85 - 2.05	Sheep	0.90 - 1.75	1117
		50-64	40	2 - 2.50	80-95	261	1.80 - 2.28	110+	12	1.55 - 1.97			
09-Aug-22	OLEX www.ontariosheep.org	0-50	73	2.20 - 3.05	65-79	225	2.43 - 2.75	95-109	753	1.97 - 2.23	Sheep	0.85 - 1.75	2108
		50-64	111	2.35 - 2.85	80-94	286	2.11 - 2.38	110+	106	1.75 - 2.00			
08-Aug-22	Embrun www.ontariosheep.org	0-50	5	1.70 - 2.60	65-79	139	2 - 2.42	95-109	30	1.96 - 2.45	Sheep	0.85 - 1.35	301
		50-64	40	1.70 - 2.40	80-94	75	2.25 - 2.50	110+	0	0 - 0.00			
04-Aug-22	Brussels www.ontariosheep.org	0-50	11	2.825 - 2.85	65-79	152	2.08 - 2.38	95-109	73	1.85 - 2.08	Sheep	0.80 - 0.80	467
		50-64	41	2.35 - 3.05	80-94	125	1.8 - 2.26	110+	16	1.8 - 1.80			

Alberta Lamb Producers does not endorse individual markets or verify prices provided.

Trends* in auction price for heavy lambs in Alberta



— 2022 — 2021 — 2020 — 2019 — 2018 — 5 yr ave

*Due to differences among auctions, prices are reported as 'trends' rather than averages.
This graph is updated on weeks with two or more markets reporting prices.