

Alberta Live Animal Markets: Visit individual market websites for more information about applicable auction fees and upcoming sales.

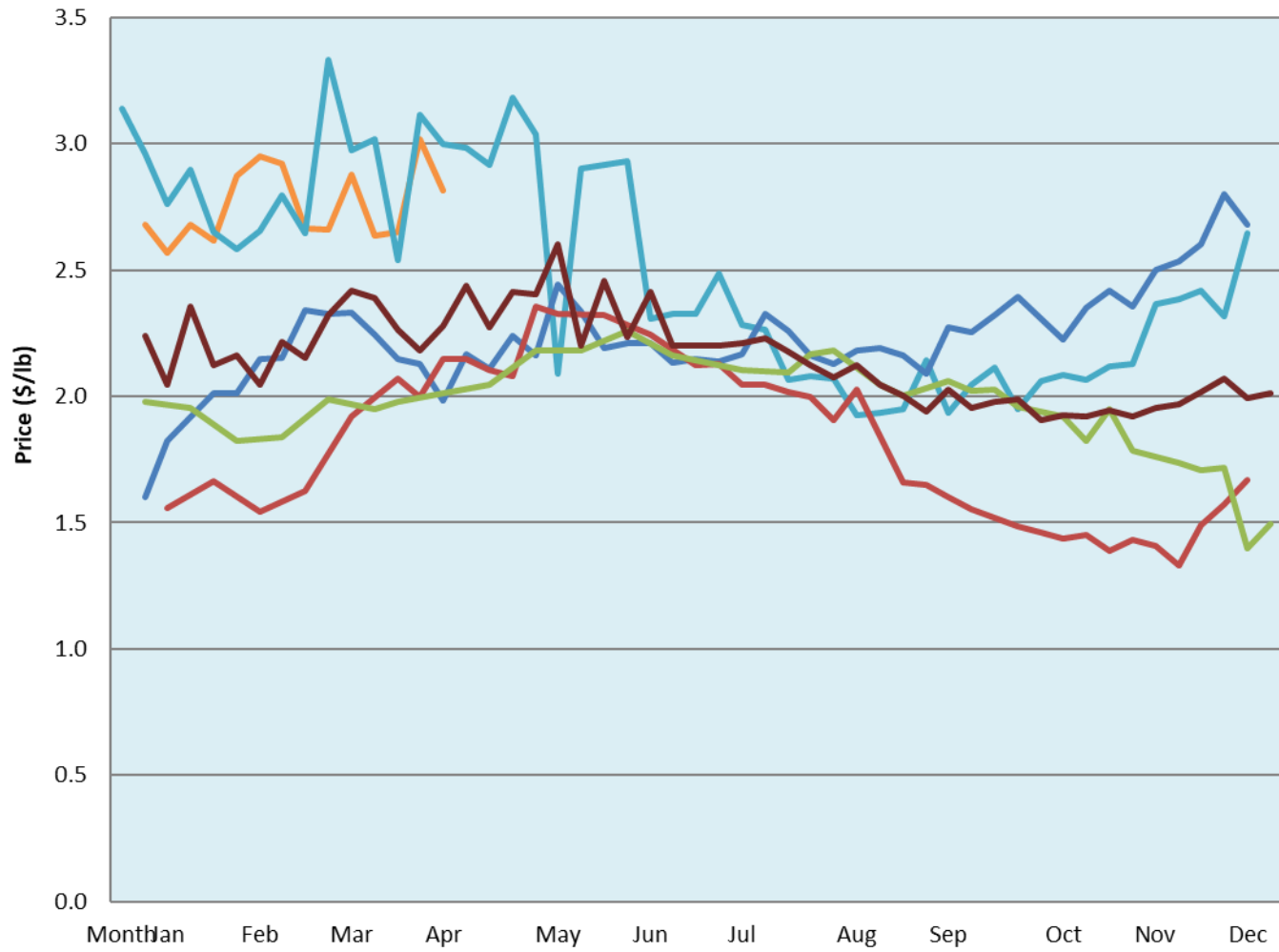
Date	Sale	Lambs (\$/lb)			Lambs (\$/lb)			Lambs (\$/lb)			Sheep(\$/lb): Bred ewes \$/hd		Total Head
		Weight (lbs)	Head	low - high	Weight (lbs)	Head	low - high	Weight (lbs)	Head	low - high	low - high	low - high	
11-Apr-22	Beaver Hill www.beaverhillauctions.com	0-54: wool	-	2.75 - 3.45	70-85: wool	-	3.20 - 3.85	86-105:wool	-	3.00 - 3.75	Ewes: wool	1.27 - 2.65	1340
		0-54: hair	-	1.90 - 2.60				86-105:hair			-	2.80 - 3.60	
		55-69: wool	-	3.40 - 3.75	70-85: hair	-	3.00 - 3.70	106+:wool	-	2.75 - 3.30	Rams: hair	1.70 - 2.65	
		55-69: hair	-	2.50 - 3.50				Bred Ewes			2.70 - 4.05		
			-					106+:hair			-	1.30 - 3.50	
No sale this week	VJV Westlock www.vjvauction.com	0-69: wool	-	- - -	70-85: wool	-	- - -	86-105: wool	-	- - -	Ewes: wool	- - -	-
			-					86-105: hair			-	- - -	
		0-69: hair	-	- - -	70-85: hair	-	- - -	106+: wool	-	- - -	Rams: hair	- - -	
			-					Bred Ewes:wool			- - -		
			-					106+: hair			-	- - -	
12-Apr-22	Olds Auction www.oldsauction.com	30-50	-	3.31 - 3.70	70-80	-	3.55 - 3.83	90-100	-	3.1 - 3.65	Ewes	1.41 - 1.89	335 (incl.goats)
		50-60	-	3.9 - 4.10	80-90	-	3.55 - 3.80	100-110	-	2.7 - 2.91	Rams	2.10 - 2.54	
		60-70	-	4.01 - 4.11				110+	-	2.7 - 2.91	Bred Ewes	- - -	
9-Apr-22	Picture Butte www.picturebutteauction.ca							Feeder	-	2.67 - 3.39	Slaughter Ewes	1.31 - 1.65	-
								Slaughter	-	2.34 - 3.00	Feeder Ewes	- - -	
											Ewe&lamb(s)	- - -	
											Bred ewes	- - -	
											Rams	1.36 - 1.81	

Ontario Live Animal Markets

11-Apr-22	OSI www.ontariosheep.org	0-50	61	4.20 - 4.80	65-80	457	3.70 - 4.45	95-110	148	3.51 - 3.66	Sheep	1.40 - 2.80	1461
		50-64	330	4.25 - 4.80	80-95	176	3.40 - 3.93	110+	22	3.45 - 3.60			
12-Apr-22	OLEX www.ontariosheep.org	0-50	248	4.50 - 5.53	65-79	569	3.88 - 4.38	95-109	427	3.65 - 3.95	Sheep	1.00 - 2.35	3093
		50-64	688	4.10 - 4.93	80-94	565	3.65 - 4.00	110+	180	2.45 - 3.80			
11-Apr-22	Embrun www.ontariosheep.org	0-50	36	3.50 - 4.68	65-79	117	4.2 - 4.42	95-109	53	3.62 - 3.95	Sheep	0.55 - 1.35	509
		50-64	149	3.55 - 4.70	80-94	79	3.9 - 4.24	110+	9	3.1 - 3.45			
7-Apr-22	Brussels www.ontariosheep.org	0-50	84	3.875 - 4.60	65-79	375	3.97 - 4.52	95-109	99	3.62 - 3.69	Sheep	1.15 - 2.80	1348
		50-64	405	4.37 - 4.70	80-94	191	3.65 - 3.82	110+	39	2.51 - 3.71			

Alberta Lamb Producers does not endorse individual markets or verify prices provided.

Trends* in auction price for heavy lambs in Alberta



— 2022
 — 2021
 — 2020
 — 2019
 — 2018
 — 5 yr ave

*Due to differences among auctions, prices are reported as 'trends' rather than averages.
 This graph is updated on weeks with two or more markets reporting prices.