

Alberta Live Animal Markets: Visit individual market websites for more information about applicable auction fees and upcoming sales.

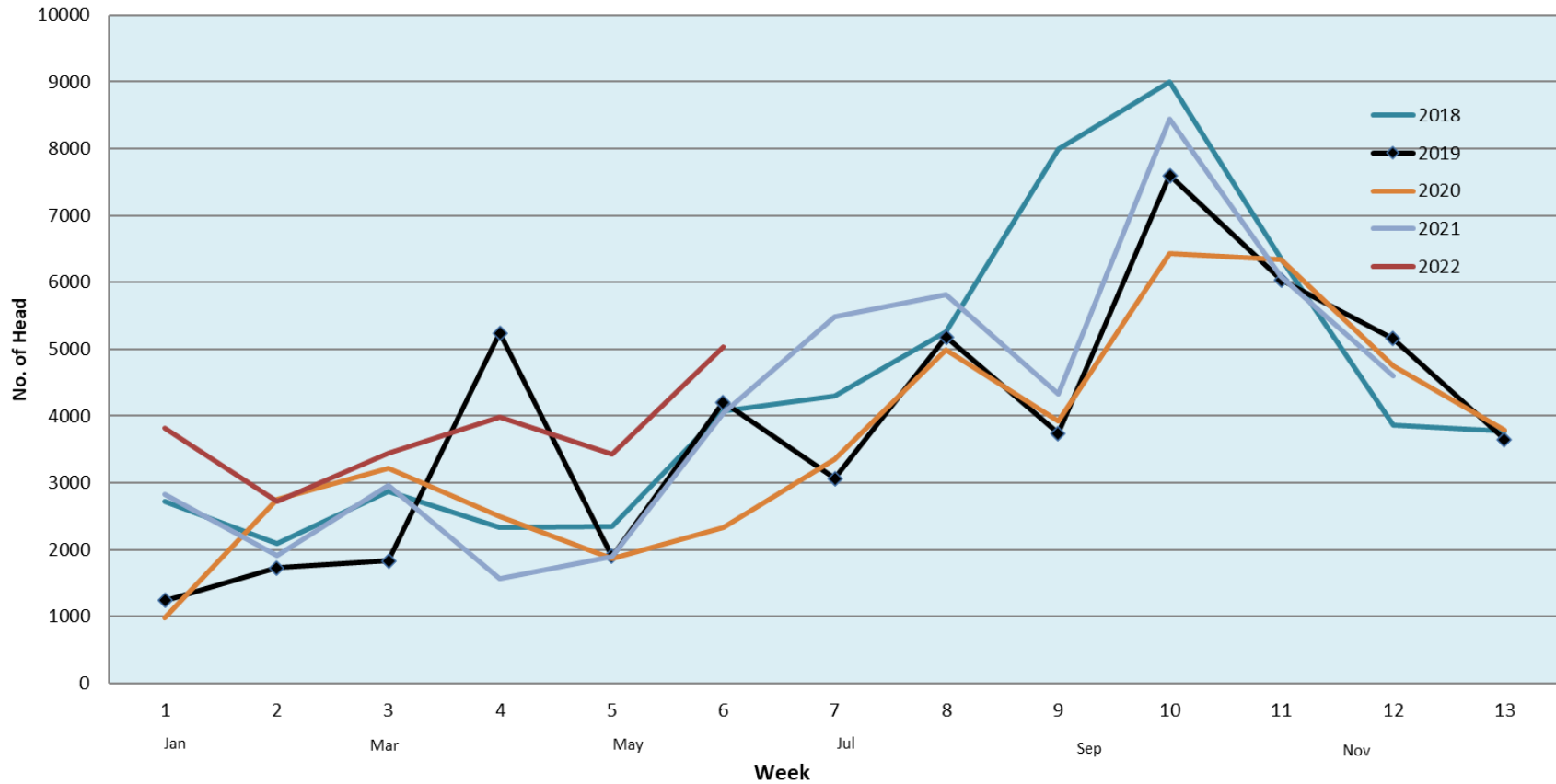
Date	Sale	Lambs (\$/lb)			Lambs (\$/lb)			Lambs (\$/lb)			Sheep(\$/lb): Bred ewes \$/hd		Total Head		
		Weight (lbs)	Head	low - high	Weight (lbs)	Head	low - high	Weight (lbs)	Head	low - high	low - high				
No sale this week	Beaver Hill www.beaverhillauctions.com	0-54: wool	-	0.00 - 0.00	70-85: wool	-	0.00 - 0.00	86-105:wool	-	0.00 - 0.00	Ewes: wool	0.00 - 0.00	0		
		0-54: hair	-	0.00 - 0.00				86-105:hair			-	0.00 - 0.00		Ewes: hair	0.00 - 0.00
		55-69: wool	-	0.00 - 0.00	70-85: hair	-	0.00 - 0.00	106+:wool	-	0.00 - 0.00	Rams: wool	0.00 - 0.00			
		55-69: hair	-	0.00 - 0.00				106+:hair			-	0.00 - 0.00		Rams: hair	0.00 - 0.00
			-								-			Bred Ewes	0.00 - 0.00
					-			-		Ewe&Lamb(s)	0.00 - 0.00				
No sale this week	VJV Westlock www.vjvauction.com	0-69: wool	-	- - -	70-85: wool	-	- - -	86-105: wool	-	- - -	Ewes: wool	- - -	-		
			-					86-105: hair			-	- - -		Ewes: hair	- - -
		0-69: hair	-	- - -	70-85: hair	-	- - -	106+: wool	-	- - -	Rams: wool	- - -			
			-					106+: hair			-	- - -		Rams: hair	- - -
			-								-			Bred Ewes:wool	- - -
				-			-		Ewe&Lamb:hair	- - -					
Information unavailable	Olds Auction www.oldsauktion.com	30-50	-	- - -	70-80	-	- - -	90-100	-	- - -	Ewes	- - -	-		
		50-60	-	- - -	80-90	-	- - -	100-110	-	- - -	Rams	- - -			
		60-70	-	- - -				110+	-	- - -	Bred Ewes	- - -		(incl.goats)	
Information unavailable	Picture Butte www.picturebutteauction.ca							Feeder	-	- - -	Slaughter Ewes	- - -	-		
								Slaughter	-	- - -	Feeder Ewes	- - -			
											Ewe&lamb(s)	- - -			
											Bred ewes	- - -			
										Rams	- - -				

Ontario Live Animal Markets

11-Jul-22	OSI www.ontariosheep.org	0-50	92	1.70 - 2.30	65-80	203	1.93 - 2.31	95-110	44	2.3 - 2.45	Sheep	1.25 - 1.95	1132
		50-64	162	2 - 2.40	80-95	172	2.20 - 2.59	110+	35	2.21 - 2.26			
12-Jul-22	OLEX www.ontariosheep.org	0-50	52	2.80 - 3.60	65-79	299	2.25 - 2.75	95-109	322	1.93 - 2.30	Sheep	1.18 - 1.68	1866
		50-64	139	2.63 - 3.08	80-94	617	2.10 - 2.35	110+	28	1.65 - 2.33			
11-Jul-22	Embrun www.ontariosheep.org	0-50	0	0.00 - 0.00	65-79	89	2.72 - 3.15	95-109	82	3.4 - 3.60	Sheep	0.70 - 1.35	298
		50-64	28	2.40 - 3.10	80-94	74	2.7 - 3.35	110+	3	2.9 - 3.15			
07-Jul-22	Brussels www.ontariosheep.org	0-50	17	2 - 2.58	65-79	308	2.6 - 3.15	95-109	123	2.8 - 3.28	Sheep	1.00 - 2.15	1105
		50-64	145	2.5 - 3.00	80-94	368	2.975 - 3.32	110+	18	2 - 2.78			

Alberta Lamb Producers does not endorse individual markets or verify prices provided.

Number of head reported sold through three Alberta live animal auctions



Note: Plotted numbers are the totals reported from 3 auction markets for each 4 week period

Month indicators are approximate and intended for reference only

Total/year: 2014 (51,383); 2015 (58,134); 2016 (49,846); 2017 (53,659); 2018 (56,980); 2019 (50,583); 2020 (47,221)