

Alberta Live Animal Markets: Visit individual market websites for more information about applicable auction fees and upcoming sales.

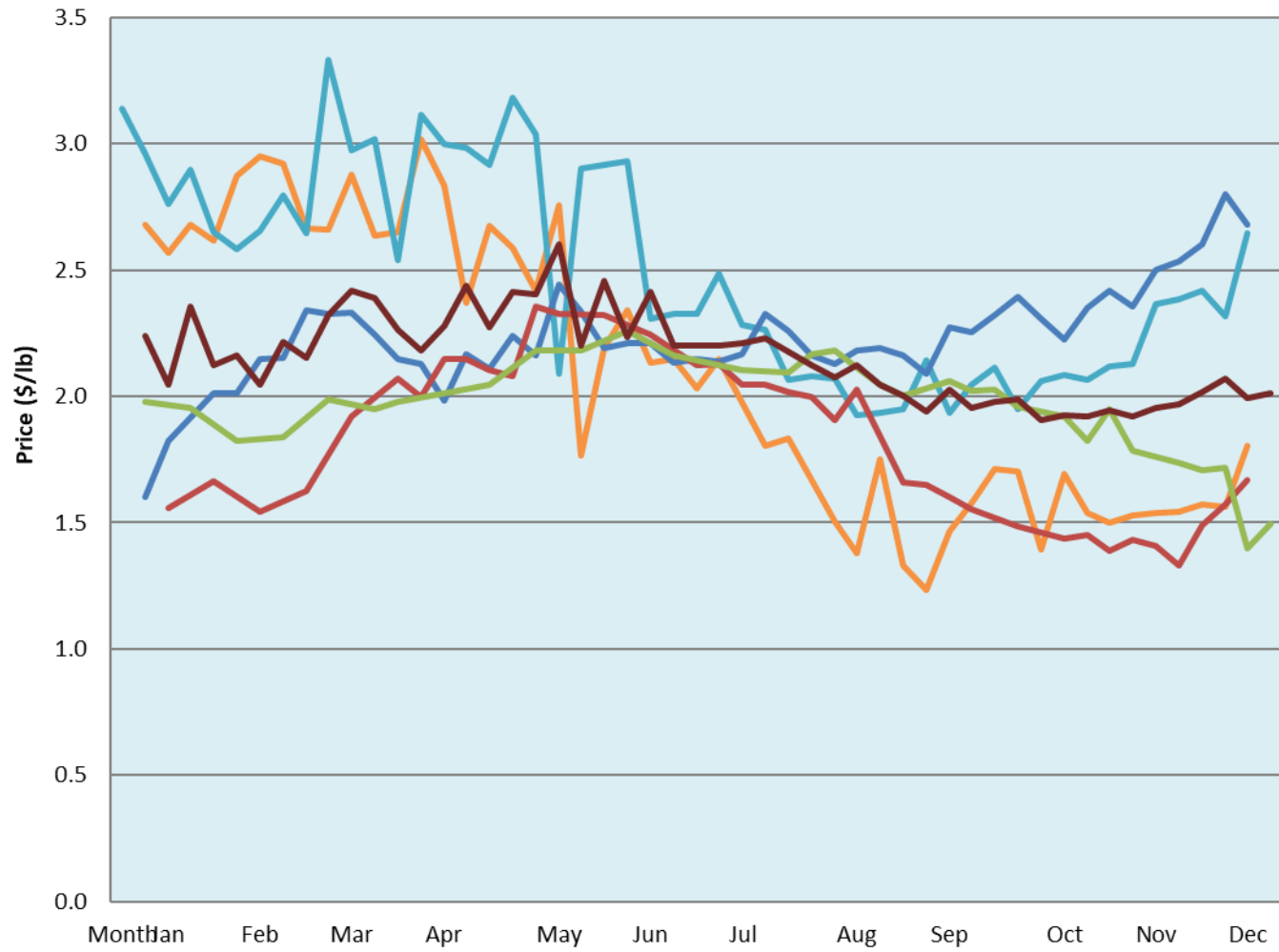
Date	Sale	Lambs (\$/lb)			Lambs (\$/lb)			Lambs (\$/lb)			Sheep(\$/lb): Bred ewes \$/hd		Total Head		
		Weight (lbs)	Head	low - high	Weight (lbs)	Head	low - high	Weight (lbs)	Head	low - high	low - high				
12-Dec-22	Beaver Hill www.beaverhillauctions.com	0-54: wool	-	2.06 - 2.40	70-85: wool	-	1.92 - 2.50	86-105:wool	-	1.55 - 2.03	Ewes: wool	1.18 - 1.55	2128		
		0-54: hair	-	1.50 - 2.25				86-105:hair			-	1.60 - 1.90		Rams: wool	1.25 - 1.78
		55-69: wool	-	2.00 - 2.56	70-85: hair	-	1.80 - 2.15	106+:wool	-	1.55 - 1.83	Rams: hair	1.00 - 1.60			
		55-69: hair	-	1.90 - 2.20				106+:hair			-	1.10 - 1.67		Bred Ewes	1.75 - 2.50
			-								-			Ewe&Lamb(s)	0.00 - 0.00
No sale this week	VJV Westlock www.vjvauction.com	0-69: wool	-	- - -	70-85: wool	-	- - -	86-105: wool	-	- - -	Ewes: wool	- - -	-		
			-			-		86-105: hair	-	- - -	Ewes: hair	- - -			
			-			-			106+: wool	-	- - -	Rams: wool		- - -	
		0-69: hair	-	- - -	70-85: hair	-	- - -	106+: hair	-	- - -	Rams: hair	- - -			
			-			-				-	- - -	Bred Ewes:wool		- - -	
Information unavailable	Olds Auction www.oldsauktion.com	30-50	-	- - -	70-80	-	- - -	90-100	-	- - -	Ewes	- - -	-		
		50-60	-	- - -	80-90	-	- - -	100-110	-	- - -	Rams	- - -			
		60-70	-	- - -				110+	-	- - -	Bred Ewes	- - -		(incl.goats)	
10-Dec-22	Picture Butte www.picturebutteauction.ca							Feeder	-	1.71 - 2.46	Slaughter Ewes	2.25 - 2.65	-		
								Slaughter	-	1.69 - 2.14	Feeder Ewes	- - -			
											Ewe&lamb(s)	- - -			
											Bred ewes	- - -			
										Rams	1.67 - 2.09				

Ontario Live Animal Markets

12-Dec-22	OSI www.ontariosheep.org	0-50	157	2.65 - 3.50	65-80	883	2.49 - 3.13	95-110	270	1.95 - 2.35	Sheep	1.25 - 2.25	3007
		50-64	543	2.55 - 3.50	80-95	450	2.12 - 2.55	110+	130	1.87 - 2.05			
13-Dec-22	OLEX www.ontariosheep.org	0-50	178	2.45 - 4.00	65-79	1275	2.48 - 3.20	95-109	900	1.95 - 2.38	Sheep	1.40 - 2.50	5056
		50-64	743	2.75 - 4.30	80-94	743	2.20 - 2.73	110+	459	1.90 - 2.30			
12-Dec-22	Embrun www.ontariosheep.org	0-50	7	2.85 - 3.20	65-79	253	2.45 - 2.97	95-109	115	1.67 - 2.40	Sheep	1.32 - 1.60	858
		50-64	186	2.35 - 3.20	80-94	216	2.1 - 2.60	110+	16	1.57 - 1.90			
08-Dec-22	Brussels www.ontariosheep.org	0-50	2	2.7 - 4.60	65-79	289	2.6 - 4.20	95-109	144	2.1 - 2.30	Sheep	1.53 - 2.50	995
		50-64	134	3.6 - 5.00	80-94	267	2.1 - 2.95	110+	46	2 - 2.45			

Alberta Lamb Producers does not endorse individual markets or verify prices provided.

Trends* in auction price for heavy lambs in Alberta



— 2022 — 2021 — 2020 — 2019 — 2018 — 5 yr ave

*Due to differences among auctions, prices are reported as 'trends' rather than averages.
This graph is updated on weeks with two or more markets reporting prices.