

Alberta Live Animal Markets: Visit individual market websites for more information about applicable auction fees and upcoming sales.

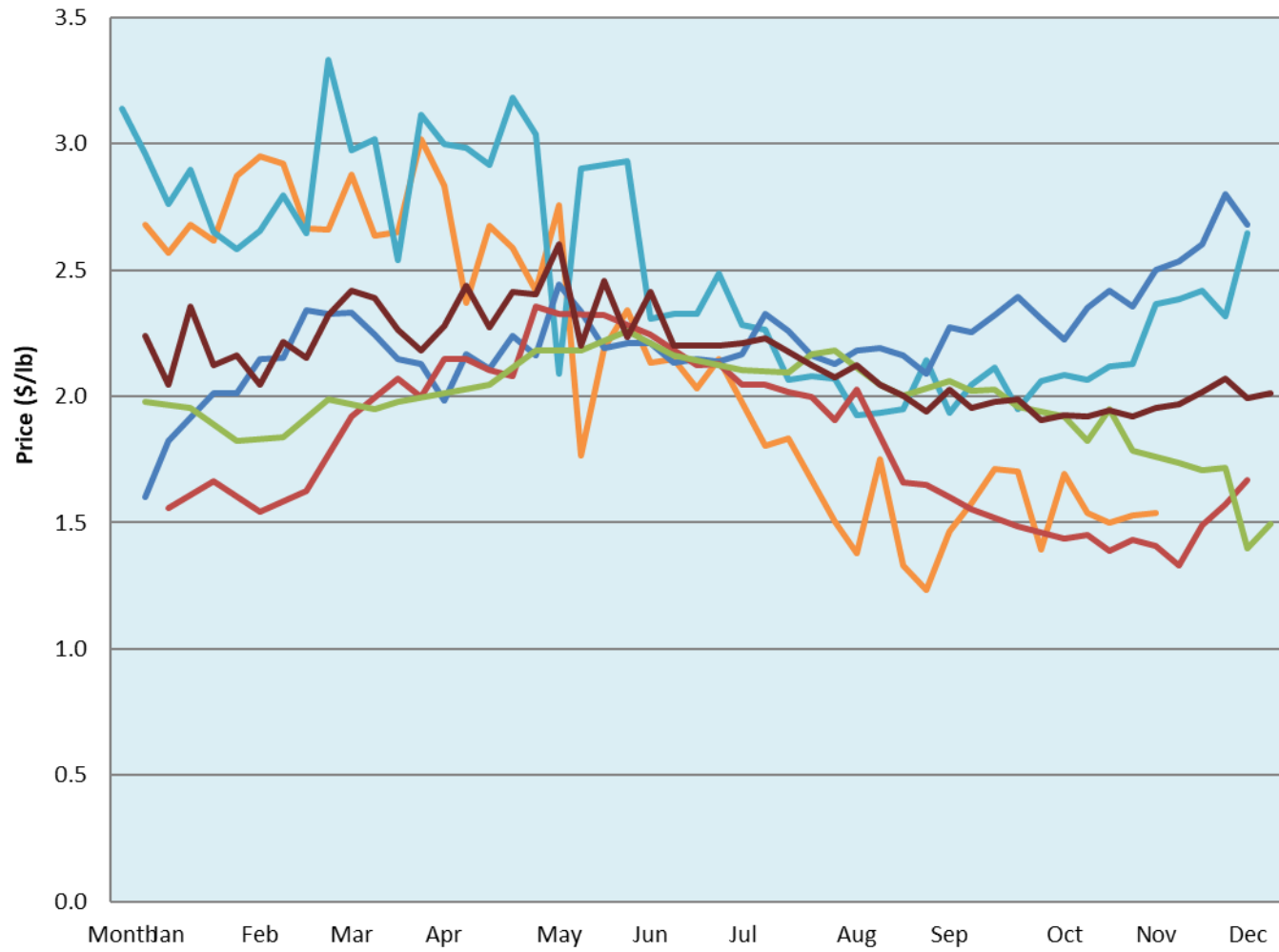
Date	Sale	Lambs (\$/lb)			Lambs (\$/lb)			Lambs (\$/lb)			Sheep(\$/lb): Bred ewes \$/hd		Total Head		
		Weight (lbs)	Head	low - high	Weight (lbs)	Head	low - high	Weight (lbs)	Head	low - high	low - high	low - high			
14-Nov-22	Beaver Hill www.beaverhillauctions.com	0-54: wool	-	2.00 - 2.50	70-85: wool	-	1.87 - 2.51	86-105:wool	-	1.65 - 2.05	Ewes: wool	1.00 - 1.43	1244		
		0-54: hair	-	1.65 - 2.05				86-105:hair			-	1.55 - 2.03		Ewes: hair	0.95 - 1.45
			-					106+:wool			-	1.50 - 1.79		Rams: wool	1.12 - 1.54
		55-69: wool	-	2.00 - 2.55	70-85: hair	-	1.80 - 2.00		Rams: hair	0.95 - 1.15					
		55-69: hair	-	1.70 - 2.00					106+:hair	-				0.95 - 1.67	Bred Ewes
			-					Ewe&Lamb(s)			0.00 - 0.00				
No sale this week	VJV Westlock www.vjvauction.com	0-69: wool	-	-	70-85: wool	-	-	86-105: wool	-	-	Ewes: wool	- - -	-		
			-					86-105: hair			-	- - -		Ewes: hair	- - -
			-					106+: wool			-	-		-	Rams: wool
		0-69: hair	-	-	70-85: hair	-	-		Rams: hair	- - -					
			-						106+: hair	-					- - -
		-	Ewe&Lamb:hair	- - -											
15-Nov-22	Olds Auction www.oldsauktion.com	30-50	-	1.36 - 1.41	70-80	-	1.8 - 2.00	90-100	-	1.5 - 1.65	Ewes	0.80 - 1.05	555 (incl.goats)		
		50-60	-	1.91 - 1.94	80-90	-	1.76 - 1.89	100-110	-	1.17 - 1.49	Rams	1.02 - 1.11			
		60-70	-	1.63 - 2.00				110+	-	1.35 - 1.52	Bred Ewes	- - -			
Information unavailable	Picture Butte www.picturebutteauction.ca							Feeder	-	- - -	Slaughter Ewes	- - -	-		
								Slaughter	-	- - -	Feeder Ewes	- - -			
											Ewe&lamb(s)	- - -			
											Bred ewes	- - -			
											Rams	- - -			

Ontario Live Animal Markets

14-Nov-22	OSI www.ontariosheep.org	0-50	47	3.25 - 3.55	65-80	282	2.88 - 3.15	95-110	43	2.175 - 2.46	Sheep	1.45 - 2.03	1013
		50-64	87	2.6 - 3.10	80-95	175	2.40 - 2.78	110+	32	2.2 - 2.35			
15-Nov-22	OLEX www.ontariosheep.org	0-50	26	0.50 - 3.90	65-79	437	2.38 - 3.03	95-109	707	2.03 - 2.35	Sheep	1.60 - 2.20	2474
		50-64	57	3.20 - 4.00	80-94	530	2.15 - 2.43	110+	194	1.85 - 2.28			
14-Nov-22	Embrun www.ontariosheep.org	0-50	23	1.90 - 3.05	65-79	88	2.74 - 2.94	95-109	44	1.85 - 2.48	Sheep	1.20 - 1.40	397
		50-64	80	2.50 - 2.85	80-94	69	2.5 - 2.80	110+	25	1.9 - 2.50			
10-Nov-22	Brussels www.ontariosheep.org	0-50	4	2 - 2.00	65-79	58	2.725 - 3.13	95-109	74	2.16 - 2.48	Sheep	0.00 - 0.00	341
		50-64	34	2.875 - 3.19	80-94	149	2.425 - 2.90	110+	22	2 - 2.33			

Alberta Lamb Producers does not endorse individual markets or verify prices provided.

Trends* in auction price for heavy lambs in Alberta



— 2022 — 2021 — 2020 — 2019 — 2018 — 5 yr ave

*Due to differences among auctions, prices are reported as 'trends' rather than averages.
 This graph is updated on weeks with two or more markets reporting prices.